



### Match Team Statistics

球队每场统计

Match 11

GUD 33.5 - 31.5 SHH

(17.5 - 16.0) (16.0 - 15.5)

Referee: WANG Y / SONG Y (ANH)

GUD - Guangdong

Players		Shots									Offence		Defence		Punishment				TP
No	Name	G/S	%	6m	Wing	9m	7m	FB	BT	EG	AS	TO	ST	BS	YC	2Min	RC	BC	
2	WANG Yixuan																		
5	ZHAO Ye	5/10	50	0/1		4/7		0/1	1/1				3	1			2		
6	ZHANG Yule	1/1	100		1/1								1	1				1	
7	GU Tianshu	1/2	50		0/1			1/1						1					
8	TANG Yue	10/13	77	1/1	2/2		1/2	2/2	4/4				2					1	
11	ZHOU Yaru	4/5	80	3/3	0/1			1/1					1					1	
13	YANG Hui	4/8	50			1/1	0/1	1/2	2/3				1	3	1		1	1	
15	WANG Hui																		
16	FENG Yinghui																		
17	CUI Yunli	6/10	60	2/2		0/2			4/5				1	4				1	
19	ZHANG Xiaomei																		
21	CHENG Leshan																		
22	FAN Chunyan																		
23	QIN Yuanyan																		
25	PAN Yuanyuan																		
26	YANG Lili																		
	Bench/Team																		
<b>Total</b>		31/49	63	6/7	3/5	5/10	1/3	5/7	11/13				4	12	4		1	6	1

Goalkeepers		Total Shots		6m Shots		Wing Shots		9m Shots		7m Shots		Fast Breaks		Breakthroughs		Empty Goal	
No	Name	S/S	%	S/S	%	S/S	%	S/S	%	S/S	%	S/S	%	S/S	%	S/S	%
16	FENG Yinghui	7/16	44	0/1		1/3	33	3/3	100	0/1		3/6	50	0/2			
22	FAN Chunyan	1/10	10	0/2		0/2		1/1	100	0/1		0/1		0/3			
26	YANG Lili	3/14	21	0/3		1/2	50	0/3		1/2	50			1/4		25	
<b>Total</b>		11/40	28	0/6		2/7	29	4/7	57	1/4	25	3/7	43	1/9		11	

Teams Shots	Goals	Saves	Missed	Post	Blocked	Total	%
6m Shots	6	1				7	86
Wing Shots	3	1	1			5	60
9m Shots	5	3	3	2	1	14	36
7m Shots	1	2			N/A	3	33
Fast Breaks	5	2				7	71
Breakthroughs	11	2				13	85
Empty Goal							
<b>Totals</b>	31	11	4	2	1	49	63

Number of Shots: 49, Scoring Efficiency: 63%



### Match Team Statistics

球队每场统计

Match 11

GUD 33.5 - 31.5 SHH

(17.5 - 16.0) (16.0 - 15.5)

Referee: WANG Y / SONG Y (ANH)

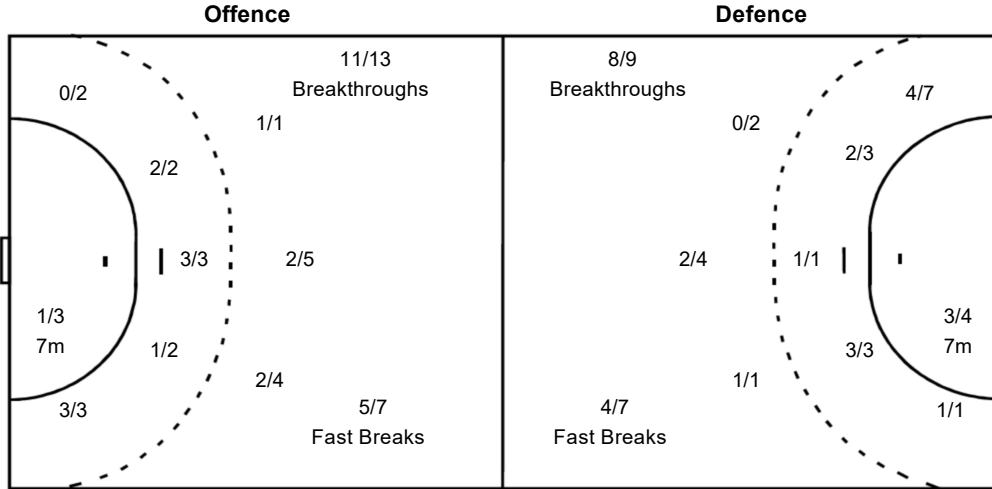
GUD - Guangdong

#### Shots Distribution

2 WANG Yixuan			5 ZHAO Ye			6 ZHANG Yule			7 GU Tianshu			8 TANG Yue			11 ZHOU Yaru			13 YANG Hui		
			1/1									2/2	1/1					1/1		
				0/1	0/3			1/1					1/2	0/1			2/2			1/1
			3/3		1/1				1/1			3/3		3/3		1/2	1/1	1/4		1/1
			1-Blocked						1-Missed											
15 WANG Hui			16 FENG Yinghui			17 CUI Yunli			19 ZHANG Xiaomei			21 CHENG Leshan			22 FAN Chunyan			23 QIN Yuanyan		
						2/2	3/3													
						1/2														
						2-Post														
25 PAN Yuanyuan			26 YANG Lili																	

#### Team Goals / Shots

6/6	4/4	
1/2	1/3	3/7
8/11	1/2	7/7
1-Missed	2-Post	1-Blocked



#### Goalkeepers Saves / Shots

1/3	2/2	1/3
4/8	1/2	1/4
0/8	0/1	2/10

16 FENG Yinghui		
	1/1	1/2
3/6	1/1	
0/1	0/1	1/4

22 FAN Chunyan		
0/1		
	0/1	0/2
0/4		1/2

26 YANG Lili		
1/2	1/1	0/1
1/2		1/2
0/3		0/4

Legend:					
%	Efficiency	+	2 Minute + 2 Minute Suspensions	2Min	2 Minute Suspensions
6m	6 metre Shots	7m	7 metre Shots	AS	Asists
BC	Blue Cards	BS	Blocked Shots	EG	Empty Goal
FB	Fast Breaks	G/S	Goals/Shots	No.	Uniform Number
RC	Red Cards	S/S	Saves/Shots	ST	Steals
TP	Time Played	Wing	Wing Shots	YC	Yellow Cards
		N/A	Not Applicable		



### Match Team Statistics

球队每场统计

Match 11

GUD 33.5 - 31.5 SHH

(17.5 - 16.0) (16.0 - 15.5)

Referee: WANG Y / SONG Y (ANH)

SHH - Shanghai

Players		Shots								Offence		Defence		Punishment				TP	
No	Name	G/S	%	6m	Wing	9m	7m	FB	BT	EG	AS	TO	ST	BS	YC	2Min	RC		BC
3	JIANG Xintong	4/4	100	1/1					3/3			4	1	1					47:01
5	WANG Jiayi	8/14	57	1/1		2/5	2/2	0/1	3/4		1	5	1			1			47:06
8	ZHANG Pingping	0/2		0/1				0/1			1					1			52:41
9	ZHENG Yanan																		
10	BAO Jiyi	6/9	67		4/7			2/2											57:52
11	LIU Xinyi																		05:45
12	DUAN Changrui																		00:00
13	WEI Xinxin																		
15	ZHUANG Xurui	2/2	100					2/2				1							12:46
17	YANG Yin	3/4	75			1/2			2/2		1	3	1						37:05
18	XU Anqi	4/5	80	4/4			0/1					2				3			42:58
19	WU Manyu																		
21	ZHANG Leying																		
22	HU Xiaoying																		50:12
23	ZHANG Yi	2/2	100		1/1		1/1				1	1	1			1			27:36
28	YANG Xiqi	0/1						0/1											30:00
	Bench/Team																		
<b>Total</b>		29/43	67	6/7	5/8	3/7	3/4	4/7	8/9		4	16	4	1		6			

Goalkeepers		Total Shots		6m Shots		Wing Shots		9m Shots		7m Shots		Fast Breaks		Breakthroughs		Empty Goal	
No	Name	S/S	%	S/S	%	S/S	%	S/S	%	S/S	%	S/S	%	S/S	%	S/S	%
12	DUAN Changrui	0/4								0/1		0/1		0/2			
22	HU Xiaoying	10/37	27	1/7	14	1/4	25	2/7	29	2/2	100	2/6	33	2/11	18		
<b>Total</b>		10/42	24	1/7	14	1/4	25	2/8	25	2/3	67	2/7	29	2/13	15		

Teams Shots	Goals	Saves	Missed	Post	Blocked	Total	%
6m Shots	6		1			7	86
Wing Shots	5	2	1			8	63
9m Shots	3	5				8	38
7m Shots	3	1			N/A	4	75
Fast Breaks	4	3				7	57
Breakthroughs	8	1				9	89
Empty Goal							
<b>Totals</b>	29	12	2			43	67

Number of Shots: 43, Scoring Efficiency: 67%



### Match Team Statistics

球队每场统计

Match 11

GUD 33.5 - 31.5 SHH

(17.5 - 16.0) (16.0 - 15.5)

Referee: WANG Y / SONG Y (ANH)

SHH - Shanghai

#### Shots Distribution

Players			Goals / Shots			
3 JIANG Xintong	5 WANG Jiayi	8 ZHANG Pingping	9 ZHENG Yanan	10 BAO Jiyi	11 LIU Xinyi	12 DUAN Changrui
1/1	0/1	1/2	0/1	0/1	1/1	1/1
1/3	0/1	1/2	2/2	1/1	2/3	1/1
2/2	1/1	4/5	1-Missed	1-Missed		
13 WEI Xinxin	15 ZHUANG Xurui	17 YANG Yin	18 XU Anqi	19 WU Manyu	21 ZHANG Leying	22 HU Xiaoying
1/1	1/1	1/1	0/1	1/1	1/1	1/1
1/1	1/1	1/1	1/1	2/2	1/1	1/1
23 ZHANG Yi	28 YANG Xiqi					
1/1	0/1					
1/1						

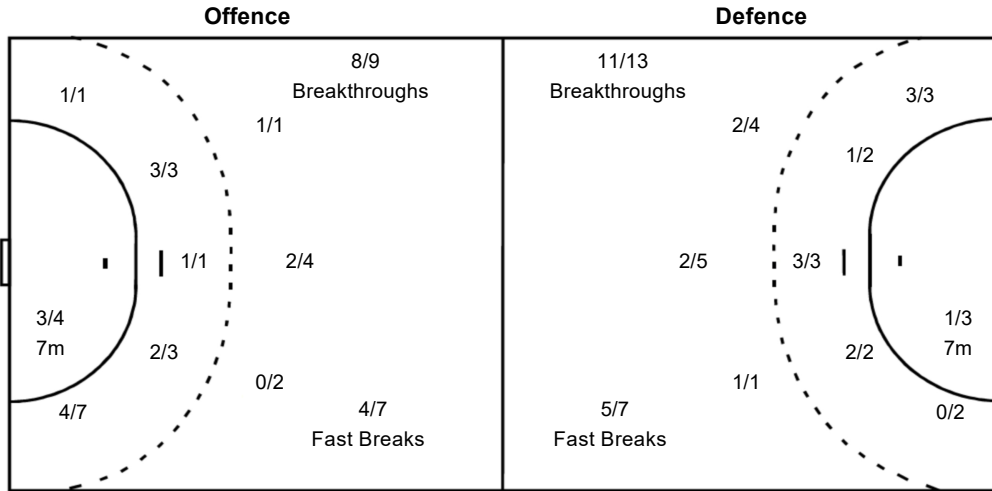
#### Goalkeepers Saves / Shots

0/6	0/4	
1/2	2/3	4/7
3/11	1/2	0/7
12 DUAN Changrui		
0/1		
0/1		0/2
22 HU Xiaoying		
0/5	0/4	
1/2	2/3	4/7
3/10	1/2	0/5

#### Team Goals / Shots

2/3	0/2	2/3
4/8	1/2	3/4
8/8	1/1	8/10

2-Missed



Legend:			
%	Efficiency	+	2 Minute + 2 Minute Suspensions
6m	6 metre Shots	7m	7 metre Shots
BC	Blue Cards	9m	9 metre Shots
FB	Fast Breaks	AS	Asists
RC	Red Cards	EG	Empty Goal
TP	Time Played	No.	Uniform Number
		TO	Turnover
		BT	Breakthroughs
		N/A	Not Applicable
		ST	Steals
		YC	Yellow Cards
		BS	Blocked Shots
		G/S	Goals/Shots
		S/S	Saves/Shots
		Wing	Wing Shots
		2Min	2 Minute Suspensions