



Match Team Statistics

球队每场统计

Match 15

GUD 21.0 - 20.5 CHQ

(12.0 - 8.0) (9.0 - 12.5)

Referee: WANG Y (ANH) / XU M (SHX)

GUD - Guangdong

Players		Shots									Offence		Defence		Punishment				TP
No	Name	G/S	%	6m	Wing	9m	7m	FB	BT	EG	AS	TO	ST	BS	YC	2Min	RC	BC	
2	WANG Yixuan																		
5	ZHAO Ye	2/7	29	1/3		1/4					1	2							48:40
6	ZHANG Yule	2/7	29		2/5			0/1	0/1			2	1		1				60:00
7	GU Tianshu	2/4	50	0/1	1/1		1/2					1				1			06:19
8	TANG Yue	4/9	44		1/3	0/1	2/2	1/3											60:00
11	ZHOU Yaru	3/3	100	1/1				2/2						1		1			60:00
13	YANG Hui	3/3	100					2/2	1/1			5		1	1				53:26
15	WANG Hui	0/1					0/1												00:23
16	FENG Yinghui										1								12:13
17	CUI Yunli	2/3	67			0/1	1/1	1/1			1	3		1		1			55:01
19	ZHANG Xiaomei	0/2				0/1			0/1			1							04:56
21	CHENG Leshan																		
22	FAN Chunyan																		27:02
23	QIN Yuanyan																		10:54
25	PAN Yuanyuan																		
26	YANG Lili																		20:40
	Bench/Team														1				
Total		18/39	46	2/5	4/9	1/7	4/6	6/9	1/3		3	14	1	3	3	3			

Goalkeepers		Total Shots		6m Shots		Wing Shots		9m Shots		7m Shots		Fast Breaks		Breakthroughs		Empty Goal	
No	Name	S/S	%	S/S	%	S/S	%	S/S	%	S/S	%	S/S	%	S/S	%	S/S	%
16	FENG Yinghui	7/22	32	3/5	60	0/3		1/2	50	1/3	33	1/4	25	1/5	20		
22	FAN Chunyan																
26	YANG Lili	4/8	50	1/1	100	1/1	100			0/1				2/5	40		
Total		11/32	34	4/6	67	1/4	25	1/4	25	1/4	25	1/4	25	3/10	30		

Teams Shots	Goals	Saves	Missed	Post	Blocked	Total	%
6m Shots	2	2	1			5	40
Wing Shots	4	4		1		9	44
9m Shots	1	3	1		2	7	14
7m Shots	4	2			N/A	6	67
Fast Breaks	6	3				9	67
Breakthroughs	1	2				3	33
Empty Goal							
Totals	18	16	2	1	2	39	46

Number of Shots: 39, Scoring Efficiency: 46%



Match Team Statistics

球队每场统计

Match 15

GUD 21.0 - 20.5 CHQ

(12.0 - 8.0) (9.0 - 12.5)

Referee: WANG Y (ANH) / XU M (SHX)

GUD - Guangdong

Shots Distribution

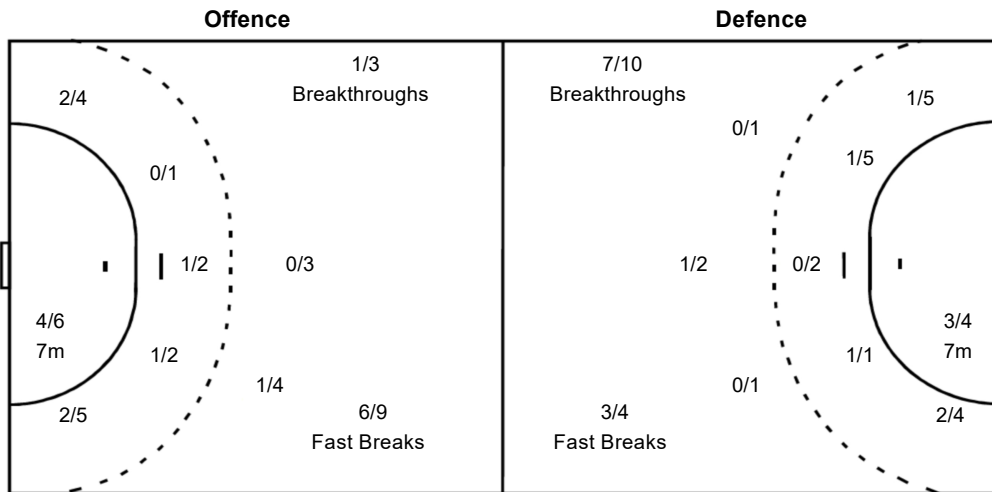
Players			Goals / Shots			
2 WANG Yixuan	5 ZHAO Ye	6 ZHANG Yule	7 GU Tianshu	8 TANG Yue	11 ZHOU Yaru	13 YANG Hui
	0/1	0/1 1/2	1/1 1/1	2/3 0/2	1/1 2/2	
	1/3	1/1	0/1 0/1	1/1 1/1		3/3
	2-Missed	1-Post		1-Blocked		
15 WANG Hui	16 FENG Yinghui	17 CUI Yunli	19 ZHANG Xiaomei	21 CHENG Leshan	22 FAN Chunyan	23 QIN Yuanyan
			0/1 0/1			
			1/1 1/1			
			0/1 1/1			
			1-Blocked			
25 PAN Yuanyuan	26 YANG Lili					

Goalkeepers Saves / Shots

0/2		0/1
2/2	0/1	3/5
2/8	0/2	4/9

Team Goals / Shots

3/4	0/1	2/3
0/5		3/6
5/9		5/6
2-Missed	1-Post	2-Blocked



16 FENG Yinghui		
0/1		0/1
2/2	0/1	2/3
1/7	0/2	2/5

22 FAN Chunyan		

26 YANG Lili		
0/1		
		1/2
1/1		2/4

Legend:					
%	Efficiency	+	2 Minute + 2 Minute Suspensions	2Min	2 Minute Suspensions
6m	6 metre Shots	7m	7 metre Shots	AS	Assists
BC	Blue Cards	BS	Blocked Shots	EG	Empty Goal
FB	Fast Breaks	G/S	Goals/Shots	No.	Uniform Number
RC	Red Cards	S/S	Saves/Shots	ST	Steals
TP	Time Played	Wing	Wing Shots	YC	Yellow Cards
		BT	Breakthroughs		
		N/A	Not Applicable		
		TO	Turnover		



Match Team Statistics

球队每场统计

Match 15

GUD 21.0 - 20.5 CHQ

(12.0 - 8.0) (9.0 - 12.5)

Referee: WANG Y (ANH) / XU M (SHX)

CHQ - Chongqing

Players		Shots									Offence		Defence		Punishment			TP	
No	Name	G/S	%	6m	Wing	9m	7m	FB	BT	EG	AS	TO	ST	BS	YC	2Min	RC		BC
5	ZHANG Yue	3/6	50		1/3		1/1		1/1			4				1			39:50
6	CHEN Xinyu	0/2		0/2								1		1		1			48:02
8	WANG Zimo	3/5	60		1/3			1/1	1/1				1						31:21
10	LI Wenhua	1/2	50	0/1		1/1						1							06:42
11	MEI Xinyang	1/2	50						1/2			1							23:31
12	FAN Wenna																		00:00
15	LI Kaixin																		01:56
16	SUN Yihan																		38:44
17	YANG Yue											2							21:10
18	TAO Lude	2/3	67	0/1					2/2			3				1			21:02
21	WANG Cailin	2/6	33	1/3		0/2			1/1		2	1							31:55
22	YANG Jie	1/2	50		1/1				0/1			2	1			2			57:10
23	LIU Xinhui	3/6	50			0/1	2/3		1/2										34:20
26	LI Baoyi	1/1	100	1/1								1	2	1	1	1			11:54
77	ZHANG Jing	2/5	40		0/2				2/3				1						28:35
	Bench/Team																		
Total		19/40	48	2/8	3/9	1/4	3/4	3/4	7/10		2	16	5	2	1	6			

Goalkeepers		Total Shots		6m Shots		Wing Shots		9m Shots		7m Shots		Fast Breaks		Breakthroughs		Empty Goal	
No	Name	S/S	%	S/S	%	S/S	%	S/S	%	S/S	%	S/S	%	S/S	%	S/S	%
12	FAN Wenna																
16	SUN Yihan	16/34	47	2/4	50	4/8	50	3/4	75	2/6	33	3/9	33	2/3	67		
Total		16/36	44	2/4	50	4/8	50	3/6	50	2/6	33	3/9	33	2/3	67		

Teams Shots	Goals	Saves	Missed	Post	Blocked	Total	%
6m Shots	2	4	1	1		8	25
Wing Shots	3	1	2	3		9	33
9m Shots	1	1			3	5	20
7m Shots	3	1			N/A	4	75
Fast Breaks	3	1				4	75
Breakthroughs	7	3				10	70
Empty Goal							
Totals	19	11	3	4	3	40	48

Number of Shots: 40, Scoring Efficiency: 48%



Match Team Statistics

球队每场统计

Match 15

GUD 21.0 - 20.5 CHQ

(12.0 - 8.0) (9.0 - 12.5)

Referee: WANG Y (ANH) / XU M (SHX)

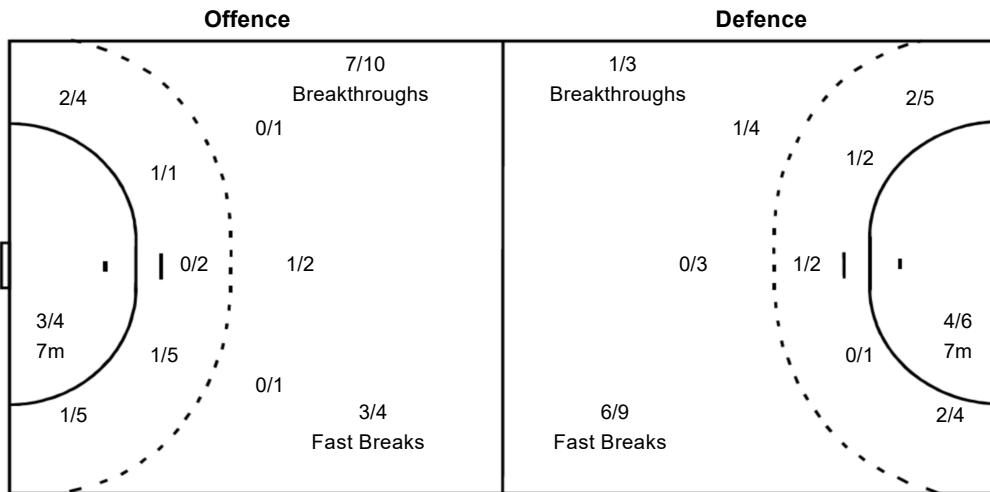
CHQ - Chongqing

Shots Distribution

5 ZHANG Yue			6 CHEN Xinyu			8 WANG Zimo			10 LI Wenhua			11 MEI Xinyang			12 FAN Wenna			15 LI Kaixin		
1/1								1/1						1/1						
	1/1	1/1	0/1		0/1	2/2		0/1	1/1					0/1						
1-Missed	1-Post							1-Post	1-Missed											
16 SUN Yihan			17 YANG Yue			18 TAO Lude			21 WANG Cailin			22 YANG Jie			23 LIU Xinhui			26 LI Baoyi		
								1/1			0/1	0/1			0/1			1/1		
							1/1		1/1		1/2	1/1			0/1		3/4			
							1-Post				2-Blocked									
77 ZHANG Jing																				
	1/1	0/1																		
1/1																				
1-Missed	1-Post																			

Team Goals / Shots

2/2		1/1
0/2	1/1	2/5
6/8	2/2	5/9
3-Missed	4-Post	2-Blocked



Goalkeepers Saves / Shots

1/4	1/1	1/3
5/5		3/6
4/9		1/6

12 FAN Wenna

16 SUN Yihan

1/4	1/1	1/3
5/5		3/6
4/9		1/6

Legend:

%	Efficiency	+	2 Minute + 2 Minute Suspensions	2Min	2 Minute Suspensions
6m	6 metre Shots	7m	7 metre Shots	AS	Assists
BC	Blue Cards	BS	Blocked Shots	EG	Empty Goal
FB	Fast Breaks	G/S	Goals/Shots	No.	Uniform Number
RC	Red Cards	S/S	Saves/Shots	ST	Steals
TP	Time Played	Wing	Wing Shots	YC	Yellow Cards
				BT	Breakthroughs
				N/A	Not Applicable
				TO	Turnover