



Match Team Statistics

球队每场统计

Match 19

SHH 32.5 - 24.5 LIN

(20.0 - 9.5) (12.5 - 15.0)

Referee: NI Z / ZHANG Z (GUX)

SHH - Shanghai

Players		Shots								Offence		Defence		Punishment				TP	
No	Name	G/S	%	6m	Wing	9m	7m	FB	BT	EG	AS	TO	ST	BS	YC	2Min	RC		BC
1	DAI Yuting											1							02:34
3	JIANG Xintong	3/3	100	2/2				1/1				3			1				47:01
5	WANG Jiayi	2/6	33	0/1		0/1		1/1	1/2			1							47:06
8	ZHANG Pingping	5/7	71	1/1	1/3			1/1	2/2			1	1				1		52:41
9	ZHENG Yanan	7/8	88		3/4			4/4									1		29:22
10	BAO Jiyi	0/2			0/2								1						57:52
11	LIU Xinyi	1/3	33			1/2			0/1			3					1		05:45
12	DUAN Changrui																		00:00
13	WEI Xinxin	0/3		0/1	0/1				0/1										24:49
15	ZHUANG Xurui																		12:46
17	YANG Yin	1/3	33			0/1		1/2				2							37:05
19	WU Manyu												1						16:59
21	ZHANG Leying	1/4	25			0/3	1/1					1							30:00
22	HU Xiaoying																		50:12
23	ZHANG Yi	6/9	67			2/4		1/1	3/3		1	4							27:36
28	YANG Xiqi	2/6	33			1/1			1/4										30:00
	Bench/Team																		
Total		28/54	52	3/5	4/10	4/12	1/1	9/10	7/13		1	16	3		1	3			

Goalkeepers		Total Shots		6m Shots		Wing Shots		9m Shots		7m Shots		Fast Breaks		Breakthroughs		Empty Goal	
No	Name	S/S	%	S/S	%	S/S	%	S/S	%	S/S	%	S/S	%	S/S	%	S/S	%
1	DAI Yuting	9/17	53	2/3	67	2/2	100	2/5	40	0/1		2/3	67	1/3	33		
12	DUAN Changrui	1/7	14			0/1		1/4	25	0/1				0/1			
22	HU Xiaoying	9/16	56	3/4	75	2/2	100	0/2				1/2	50	3/6	50		
Total		19/40	48	5/7	71	4/5	80	3/11	27	0/2		3/5	60	4/10	40		

Teams Shots	Goals	Saves	Missed	Post	Blocked	Total	%
6m Shots	3		1	1		5	60
Wing Shots	4	4		2		10	40
9m Shots	4	3	6	1	1	15	27
7m Shots	1				N/A	1	100
Fast Breaks	9			1		10	90
Breakthroughs	7	6				13	54
Empty Goal							
Totals	28	13	7	5	1	54	52

Number of Shots: 54, Scoring Efficiency: 52%



Match Team Statistics

球队每场统计

Match 19

SHH 32.5 - 24.5 LIN
(20.0 - 9.5) (12.5 - 15.0)

Referee: NI Z / ZHANG Z (GUX)

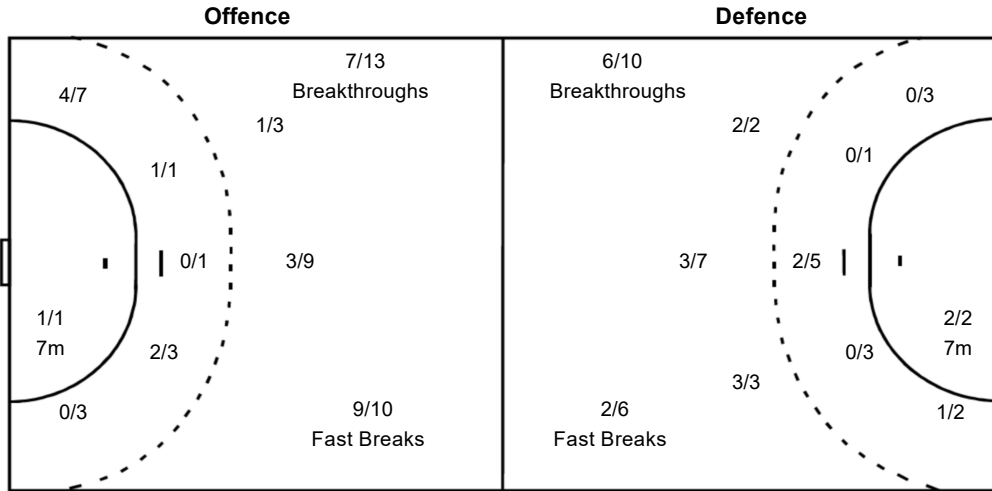
SHH - Shanghai

Shots Distribution

1 DAI Yuting			3 JIANG Xintong			5 WANG Jiayi			8 ZHANG Pingping			9 ZHENG Yanan			10 BAO Jiyi			11 LIU Xinyi		
					2/2						1/1	1/1			0/1			1/1		
			1/1			1/2		1/2	1/2		3/4	1/1			0/1					0/1
						1-Missed		1-Post						1-Post				1-Missed		
12 DUAN Changrui			13 WEI Xinxin			15 ZHUANG Xurui			17 YANG Yin			19 WU Manyu			21 ZHANG Leying			22 HU Xiaoying		
																	0/1			
			0/1								1/1				1/1					
			1-Missed		1-Post				1-Missed		1-Post				1-Missed		1-Post			
23 ZHANG Yi			28 YANG Xiqi																	
3/3					0/1															
1/1					0/1															
1/2	1/1		1/2		1/1															
1-Missed																				

Team Goals / Shots

5/6		3/4
2/2	0/1	0/2
10/16	1/1	7/9
6-Missed		5-Post



Goalkeepers Saves / Shots

2/7	1/1	1/4
1/2	4/4	3/5
4/9	0/1	3/9

1 DAI Yuting		
1/4	1/1	1/2
1/1	2/2	2/3
0/1		1/4

12 DUAN Changrui		
		0/1
	1/1	0/1
0/3	0/1	0/1

22 HU Xiaoying		
1/3		0/1
0/1	1/1	1/1
4/5		2/4

Legend:					
%	Efficiency	+	2 Minute + 2 Minute Suspensions	2Min	2 Minute Suspensions
6m	6 metre Shots	7m	7 metre Shots	AS	Assists
BC	Blue Cards	BS	Blocked Shots	EG	Empty Goal
FB	Fast Breaks	G/S	Goals/Shots	No.	Uniform Number
RC	Red Cards	S/S	Saves/Shots	ST	Steals
TP	Time Played	Wing	Wing Shots	YC	Yellow Cards
		N/A	Not Applicable		



Match Team Statistics

球队每场统计

Match 19

SHH 32.5 - 24.5 LIN

(20.0 - 9.5) (12.5 - 15.0)

Referee: NI Z / ZHANG Z (GUX)

LIN - Liaoning

Players		Shots									Offence		Defence		Punishment				TP	
No	Name	G/S	%	6m	Wing	9m	7m	FB	BT	EG	AS	TO	ST	BS	YC	2Min	RC	BC		
2	XUE Yanan																			00:00
6	SHI Jingjing	2/4	50	1/1	0/1	0/1			1/1				3							24:45
7	LIANG Haizhen	6/13	46	0/4	1/2	1/2	2/2	0/1	2/2				1	2						53:41
8	HU Wenxue																			03:33
9	XIE Linxuan	0/2			0/2															15:37
10	SHI Yuxin	0/1						0/1				1	4					1		56:19
11	ZHU Haiyun	12/20	60	1/4		5/6		1/2	3/6			1	6	2						53:58
12	CHEN Ranran												1							18:40
13	CAO Ying																			19:40
14	ZHENG Yaxin	0/1						0/1												22:19
23	TAO Cui	3/5	60			2/3		1/1	0/1				5						1	15:46
24	HUI Yutong																		1	13:06
26	YIN Xiaoping																			30:30
Bench/Team																				
Total		23/46	50	2/9	1/5	8/12	2/2	2/6	6/10			2	20	4	1	1	2			

Goalkeepers		Total Shots		6m Shots		Wing Shots		9m Shots		7m Shots		Fast Breaks		Breakthroughs		Empty Goal	
No	Name	S/S	%	S/S	%	S/S	%	S/S	%	S/S	%	S/S	%	S/S	%	S/S	%
12	CHEN Ranran	12/40	30	0/3		4/8	50	2/6	33	0/1		0/9		6/13	46		
Total		12/40	30	0/3		4/8	50	2/6	33	0/1		0/9		6/13	46		

Teams Shots	Goals	Saves	Missed	Post	Blocked	Total	%
6m Shots	2	5	1	1		9	22
Wing Shots	1	4				5	20
9m Shots	10	3	1			14	71
7m Shots	2				N/A	2	100
Fast Breaks	2	3	1			6	33
Breakthroughs	6	4				10	60
Empty Goal							
Totals	23	19	3	1		46	50

Number of Shots: 46, Scoring Efficiency: 50%



Match Team Statistics

球队每场统计

Match 19

SHH 32.5 - 24.5 LIN

(20.0 - 9.5) (12.5 - 15.0)

Referee: NI Z / ZHANG Z (GUX)

LIN - Liaoning

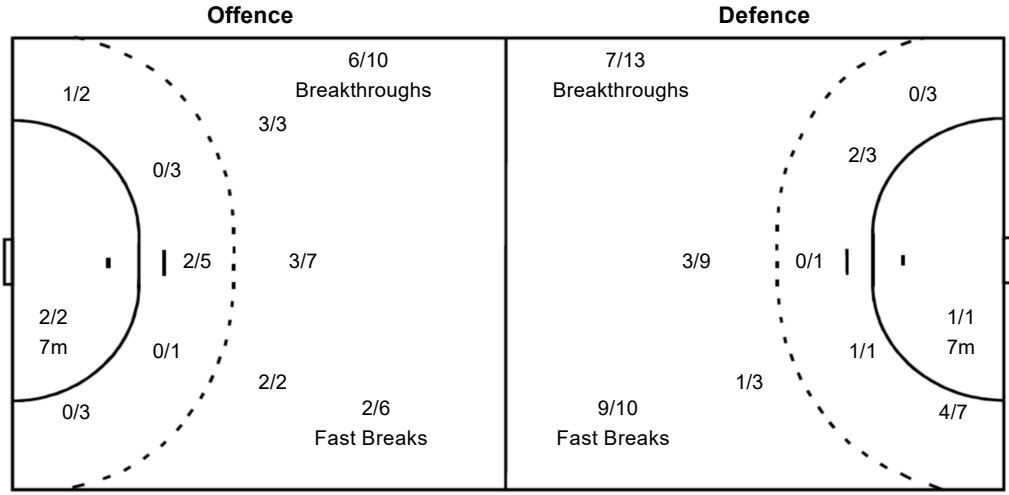
Shots Distribution

2 XUE Yanan			6 SHI Jingjing			7 LIANG Haizhen			8 HU Wenxue			9 XIE Linxuan			10 SHI Yuxin			11 ZHU Haiyun					
					1/1	1/1		1/1									0/1				1/1		1/2
				0/1		0/1	0/1	0/3													1/1	0/1	2/2
			0/1		1/1	2/2		2/2													3/5	1/1	3/5
						2-Missed																	
												1-Missed 1-Post											
12 CHEN Ranran			13 CAO Ying			14 ZHENG Yaxin			23 TAO Cui			24 HUI Yutong			26 YIN Xiaoping								
									3/3														
										0/1													
						0/1					0/1												

Team Goals / Shots

5/7	0/1	3/4
1/2	0/4	2/5
5/9	1/1	6/9

3-Missed 1-Post



Goalkeepers Saves / Shots

1/6		1/4
0/2	1/1	2/2
6/16	0/1	2/9

12 CHEN Ranran

1/6		1/4
0/2	1/1	2/2
6/16	0/1	2/9

Legend:

% Efficiency	+ 2 Minute + 2 Minute Suspensions	2Min 2 Minute Suspensions
6m 6 metre Shots	7m 7 metre Shots	AS Asists
BC Blue Cards	BS Blocked Shots	EG Empty Goal
FB Fast Breaks	G/S Goals/Shots	No. Uniform Number
RC Red Cards	S/S Saves/Shots	TO Turnover
TP Time Played	Wing Wing Shots	
	9m 9 metre Shots	
	BT Breakthroughs	
	N/A Not Applicable	
	ST Steals	
	YC Yellow Cards	