



### Match Team Statistics

球队每场统计

Match 20

JIS 41.5 - 23.0 GUD

(20.0 - 5.0) (21.5 - 18.0)

Referee: SONG Y (ANH) / GONG Z (SHD)

JIS - Jiangsu

Players		Shots									Offence		Defence		Punishment				TP	
No	Name	G/S	%	6m	Wing	9m	7m	FB	BT	EG	AS	TO	ST	BS	YC	2Min	RC	BC		
5	LIAN Suqi	2/2	100				1/1	1/1												24:19
6	LIU Jie	5/6	83				1/1	1/1	2/3											44:06
7	SUN Miaomiao	4/5	80	2/2	0/1		1/1	1/1				3								11:41
9	MO Mengmeng																			32:11
10	HUANG Huiying																			19:09
12	HUANG Xia										1		1							30:00
13	WU Meiqi	2/3	67			0/1		2/2			2									36:50
17	ZHOU Yuchen	5/5	100					1/1	4/4			3	1	2						30:00
20	XING Ziyang	0/5				0/1			0/3			3					1			30:00
23	GAO Jing	1/1	100					1/1			1			1						00:00
25	GAO Yuanyuan																			18:58
26	WANG Dan	4/5	80					2/3	2/2		1	2	1							12:56
27	JIAO Ya	7/13	54	1/1	0/1	2/4	2/2	1/2	1/2		1			4						00:00
28	LI Yuanmeng	4/5	80	1/2				3/3				1	1	1						00:00
32	ZHANG Qiuyu	1/3	33		0/1		1/1	0/1									1			18:16
66	SONG Chenxi										1	1								00:00
	Bench/Team																			
<b>Total</b>		35/53	66	4/5	0/3	2/6	6/6	13/16	9/14		7	13	4	8			2			

Goalkeepers		Total Shots		6m Shots		Wing Shots		9m Shots		7m Shots		Fast Breaks		Breakthroughs		Empty Goal	
No	Name	S/S	%	S/S	%	S/S	%	S/S	%	S/S	%	S/S	%	S/S	%	S/S	%
12	HUANG Xia	8/12	67	1/1	100	4/5	80	3/3	100	0/1		0/2					
66	SONG Chenxi	9/24	38	0/5		2/2	100	2/3	67	1/2	50	2/8	25	2/4	50		
<b>Total</b>		17/44	39	1/6	17	6/7	86	5/14	36	1/3	33	2/10	20	2/4	50		

Teams Shots	Goals	Saves	Missed	Post	Blocked	Total	%
6m Shots	4	1				5	80
Wing Shots		2		1		3	0
9m Shots	3	2	2		2	9	33
7m Shots	6				N/A	6	100
Fast Breaks	13	3				16	81
Breakthroughs	9	4		1		14	64
Empty Goal							
<b>Totals</b>	35	12	2	2	2	53	66

Number of Shots: 53, Scoring Efficiency: 66%



### Match Team Statistics

球队每场统计

Match 20

JIS 41.5 - 23.0 GUD

(20.0 - 5.0) (21.5 - 18.0)

Referee: SONG Y (ANH) / GONG Z (SHD)

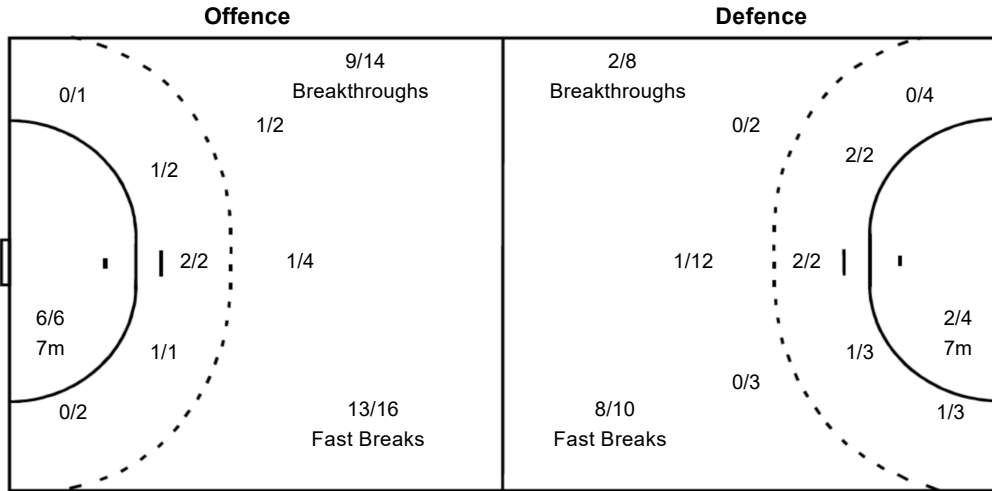
JIS - Jiangsu

#### Shots Distribution

5 LIAN Suqi			6 LIU Jie			7 SUN Miaomiao			9 MO Mengmeng			10 HUANG Huiying			12 HUANG Xia			13 WU Meiqi		
1/1																				1/1
1/1			4/4		1/1	3/3		1/2										1/1		
			1-Post												1-Missed					
17 ZHOU Yuchen			20 XING Ziyang			23 GAO Jing			25 GAO Yuanyuan			26 WANG Dan			27 JIAO Ya			28 LI Yuanmeng		
		1/1			0/1									1/1	2/3		1/1			
	1/1	1/1													1/1	0/1				
		2/2		0/1	0/2	1/1						2/3		1/1	2/2		1/2	1/2		3/3
															1-Post 1-Blocked					
32 ZHANG Qiuyu			66 SONG Chenxi																	
0/1	1/1																			
		0/1																		

#### Team Goals / Shots

3/5	1/1	4/5
1/1	1/2	1/1
15/17	0/1	9/14
1-Missed 2-Post 1-Blocked		



#### Goalkeepers Saves / Shots

0/4	1/1	1/4
1/1		2/3
4/9	0/1	10/15

12 HUANG Xia		
0/2	1/1	
1/1		1/1
2/3		4/5

66 SONG Chenxi		
0/2		1/4
		1/2
2/6	0/1	6/10

Legend:					
%	Efficiency	+	2 Minute + 2 Minute Suspensions	2Min	2 Minute Suspensions
6m	6 metre Shots	7m	7 metre Shots	AS	Assists
BC	Blue Cards	BS	Blocked Shots	EG	Empty Goal
FB	Fast Breaks	G/S	Goals/Shots	No.	Uniform Number
RC	Red Cards	S/S	Saves/Shots	ST	Steals
TP	Time Played	Wing	Wing Shots	YC	Yellow Cards



### Match Team Statistics

球队每场统计

Match 20

JIS 41.5 - 23.0 GUD

(20.0 - 5.0) (21.5 - 18.0)

Referee: SONG Y (ANH) / GONG Z (SHD)

GUD - Guangdong

Players		Shots									Offence		Defence		Punishment				TP
No	Name	G/S	%	6m	Wing	9m	7m	FB	BT	EG	AS	TO	ST	BS	YC	2Min	RC	BC	
2	WANG Yixuan	1/1	100	1/1															00:00
5	ZHAO Ye	4/15	27	0/1		0/6	0/1	2/3	2/4			2							48:40
6	ZHANG Yule	0/3			0/2	0/1						3							60:00
7	GU Tianshu	6/10	60	2/3	1/1	0/1		3/3	0/1			2	1				1		06:19
8	TANG Yue																		60:00
11	ZHOU Yaru	1/2	50	1/1	0/1									2					60:00
13	YANG Hui	1/1	100				1/1									1			53:26
15	WANG Hui	1/11	9		0/2	0/6	1/2				1	3					1		00:23
16	FENG Yinghui										1								12:13
17	CUI Yunli																		55:01
19	ZHANG Xiaomei	2/6	33			1/2		1/1	0/3		2	5							04:56
21	CHENG Leshan	0/1						0/1											13:07
22	FAN Chunyan											1							27:02
23	QIN Yuanyan	0/2			0/1	0/1						3							10:54
25	PAN Yuanyuan	3/3	100	1/1				2/2					1				1		33:43
26	YANG Lili										1								20:40
	Bench/Team																		
<b>Total</b>		19/55	35	5/7	1/7	1/17	2/4	8/10	2/8		5	19	2	2	1		3		

Goalkeepers		Total Shots		6m Shots		Wing Shots		9m Shots		7m Shots		Fast Breaks		Breakthroughs		Empty Goal	
No	Name	S/S	%	S/S	%	S/S	%	S/S	%	S/S	%	S/S	%	S/S	%	S/S	%
16	FENG Yinghui	3/6	50			1/1	100			0/1		0/2		2/2	100		
22	FAN Chunyan	3/17	18	1/2	50			0/1		0/2		2/7	29	0/5			
26	YANG Lili	6/23	26	0/3		1/1	100	2/3	67	0/3		1/7	14	2/6	33		
<b>Total</b>		12/47	26	1/5	20	2/2	100	2/5	40	0/6		3/16	19	4/13	31		

Teams Shots	Goals	Saves	Missed	Post	Blocked	Total	%
6m Shots	5	1		1		7	71
Wing Shots	1	6				7	14
9m Shots	1	7	2	1	8	19	5
7m Shots	2	1		1	N/A	4	50
Fast Breaks	8	2				10	80
Breakthroughs	2	3	3			8	25
Empty Goal							
<b>Totals</b>	19	20	5	3	8	55	35

Number of Shots: 55, Scoring Efficiency: 35%



### Match Team Statistics

球队每场统计

Match 20

JIS 41.5 - 23.0 GUD

(20.0 - 5.0) (21.5 - 18.0)

Referee: SONG Y (ANH) / GONG Z (SHD)

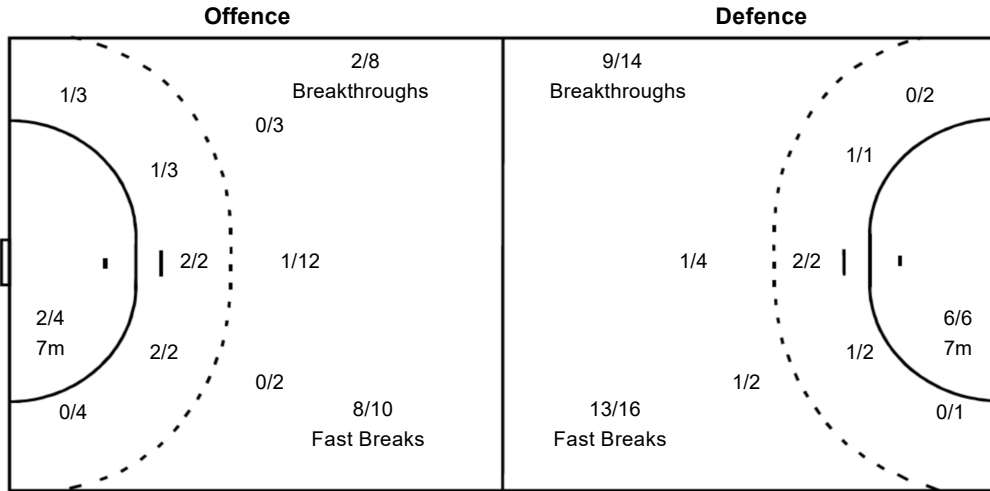
GUD - Guangdong

#### Shots Distribution

Players		
Goals / Shots		
2 WANG Yixuan	5 ZHAO Ye	6 ZHANG Yule
	1/1	0/1
	0/1	0/1
	2/2	1/3
1-Missed 2-Post 4-Blocked		1-Blocked
7 GU Tianshu	8 TANG Yue	11 ZHOU Yaru
2/2	2/3	
2/3	0/2	1/2
		1/1
15 WANG Hui	16 FENG Yinghui	17 CUI Yunli
0/1		
1/5		
1-Missed 1-Post 3-Blocked		
19 ZHANG Xiaomei	21 CHENG Leshan	22 FAN Chunyan
	1/1	
1/1	0/1	
0/1		
3-Missed		
23 QIN Yuanyan		
0/2		
25 PAN Yuanyuan	26 YANG Lili	
1/1		
1/1		
1/1		

#### Team Goals / Shots

4/4	0/1	3/4
0/1		1/3
5/9	1/1	5/16
5-Missed 3-Post 8-Blocked		



#### Goalkeepers Saves / Shots

2/5	0/1	1/5
0/1	1/2	0/1
2/17	1/1	5/14
16 FENG Yinghui		
		1/2
0/1	1/1	1/2
22 FAN Chunyan		
1/2		0/1
0/1		0/1
2/9		0/4
26 YANG Lili		
1/3	0/1	0/2
	1/2	
0/7		4/8

Legend:					
%	Efficiency	+	2 Minute + 2 Minute Suspensions	2Min	2 Minute Suspensions
6m	6 metre Shots	7m	7 metre Shots	AS	Assists
BC	Blue Cards	BS	Blocked Shots	EG	Empty Goal
FB	Fast Breaks	G/S	Goals/Shots	No.	Uniform Number
RC	Red Cards	S/S	Saves/Shots	ST	Steals
TP	Time Played	Wing	Wing Shots	YC	Yellow Cards
				N/A	Not Applicable
				BT	Breakthroughs
				TO	Turnover