



### Match Team Statistics

球队每场统计

Match 22

ANH 27.5 - 26.5 SHH

(12.0 - 10.5) (15.5 - 16.0)

Referee: ZHOU Y (JIS) / ZHANG Z (GUX)

ANH - Anhui

Players		Shots									Offence		Defence		Punishment				TP	
No	Name	G/S	%	6m	Wing	9m	7m	FB	BT	EG	AS	TO	ST	BS	YC	2Min	RC	BC		
1	ZHANG Jiakuan																			26:22
3	SUO Shanshan																			34:25
6	SHU Wenqi																			53:30
8	XU Shiyuan																			
11	ZHAO Ruoyan	2/2	100		1/1			1/1				2					1			37:02
12	YANG Wenqi																			33:06
15	ZHU Mengying	2/3	67		2/2			0/1				1					2			21:16
18	CAI Xuejie	6/7	86	3/3					3/3			2					2			20:19
19	XU Qiyuan																			00:28
20	SUN Mingyue	2/4	50		1/2	0/1		1/1			1	4		1	1					60:00
23	HE Yali	2/3	67	1/1		0/1			1/1		1	4	1							39:39
26	DING Lijie																			
41	DU Jijuan	1/1	100				1/1													30:00
93	ZHANG Tingting	10/15	67	1/1		0/4	3/3	2/2	4/4		2	4					2			28:06
96	ZHANG Wenhui	0/2		0/1				0/1				1		1			1			60:00
	Bench/Team														1					
<b>Total</b>		25/37	68	5/6	4/5	0/6	4/4	4/6	8/8		4	18	1	2	2		8			

Goalkeepers		Total Shots		6m Shots		Wing Shots		9m Shots		7m Shots		Fast Breaks		Breakthroughs		Empty Goal	
No	Name	S/S	%	S/S	%	S/S	%	S/S	%	S/S	%	S/S	%	S/S	%	S/S	%
1	ZHANG Jiakuan	15/36	42	6/12	50	3/5	60	3/9	33	0/2		0/3		3/5	60		
8	XU Shiyuan																
12	YANG Wenqi	1/5	20			0/2				1/3	33						
<b>Total</b>		16/43	37	6/12	50	3/7	43	3/11	27	1/5	20	0/3		3/5	60		

Teams Shots	Goals	Saves	Missed	Post	Blocked	Total	%
6m Shots	5			1		6	83
Wing Shots	4	1				5	80
9m Shots		5	3			8	0
7m Shots	4				N/A	4	100
Fast Breaks	4	1		1		6	67
Breakthroughs	8					8	100
Empty Goal							
<b>Totals</b>	25	7	3	2		37	68

Number of Shots: 37, Scoring Efficiency: 68%



**Match Team Statistics**

球队每场统计

**Match 22**

**ANH 27.5 - 26.5 SHH**

**(12.0 - 10.5) (15.5 - 16.0)**

Referee: ZHOU Y (JIS) / ZHANG Z (GUX)

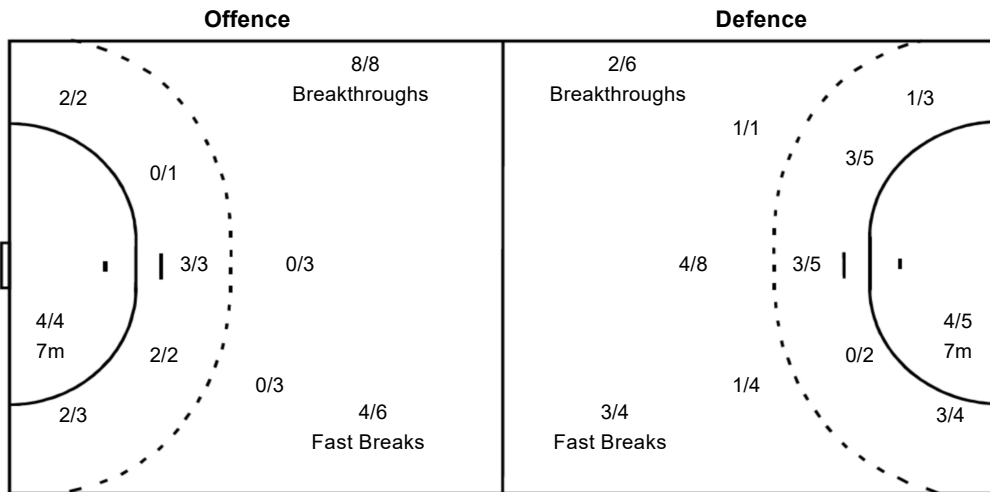
**ANH - Anhui**

**Shots Distribution**

Players			Goals / Shots			
1 ZHANG Jiaxuan	3 SUO Shanshan	6 SHU Wenqi	8 XU Shiyuan	11 ZHAO Ruoyan	12 YANG Wenqi	15 ZHU Mengying
				1/1	1/1	1/1
						1-Post
18 CAI Xuejie	19 XU Qiyao	20 SUN Mingyue	23 HE Yali	26 DING Lijie	41 DU Jijuan	93 ZHANG Tingting
1/1	1/1	1/1 0/1				1/1
3/3	1/1	1/2	0/1 1/1 1/1		1/1	2/2 0/1 0/1
						4/4 1/2 2/2
						2-Missed
96 ZHANG Wenhui						
						0/1
						1-Post

**Team Goals / Shots**

3/3	0/1	1/1
2/2	0/1	1/3
11/13	2/3	5/5
2-Missed	2-Post	



**Goalkeepers Saves / Shots**

0/2		0/3
6/6	1/1	1/2
3/13	0/1	5/13

1 ZHANG Jiaxuan

0/2		0/2
6/6	1/1	1/2
3/12	0/1	4/10

8 XU Shiyuan


12 YANG Wenqi

		0/1
0/1		1/3

**Legend:**

%	Efficiency	+	2 Minute + 2 Minute Suspensions	2Min	2 Minute Suspensions
6m	6 metre Shots	7m	7 metre Shots	AS	Assists
BC	Blue Cards	BS	Blocked Shots	EG	Empty Goal
FB	Fast Breaks	G/S	Goals/Shots	No.	Uniform Number
RC	Red Cards	S/S	Saves/Shots	ST	Steals
TP	Time Played	Wing	Wing Shots	YC	Yellow Cards
				N/A	Not Applicable
				BT	Breakthroughs



### Match Team Statistics

球队每场统计

Match 22

ANH 27.5 - 26.5 SHH

(12.0 - 10.5) (15.5 - 16.0)

Referee: ZHOU Y (JIS) / ZHANG Z (GUX)

SHH - Shanghai

Players		Shots									Offence		Defence		Punishment				TP
No	Name	G/S	%	6m	Wing	9m	7m	FB	BT	EG	AS	TO	ST	BS	YC	2Min	RC	BC	
1	DAI Yuting																		02:34
3	JIANG Xintong	3/5	60	2/3	1/1			0/1					1						47:01
5	WANG Jiayi	7/10	70	0/1		3/3	1/1	1/1	2/4		2	3				1			47:06
8	ZHANG Pingping	2/4	50	0/1	2/3							1	1		1	1			52:41
9	ZHENG Yanan	2/3	67		1/2			1/1				1							29:22
10	BAO Jiayi	1/3	33	0/1	0/1			1/1											57:52
11	LIU Xinyi																		05:45
12	DUAN Changrui																		00:00
13	WEI Xinxin																		24:49
15	ZHUANG Xurui																		12:46
17	YANG Yin	4/8	50	4/5		0/2	0/1					5							37:05
19	WU Manyu																		16:59
21	ZHANG Leying																		30:00
22	HU Xiaoying																		50:12
23	ZHANG Yi																		27:36
28	YANG Xiqi	6/14	43	0/1		3/8	3/3		0/2		1	1				1			30:00
	Bench/Team														1				
	<b>Total</b>	25/47	53	6/12	4/7	6/13	4/5	3/4	2/6		3	11	2		2	3			

Goalkeepers		Total Shots		6m Shots		Wing Shots		9m Shots		7m Shots		Fast Breaks		Breakthroughs		Empty Goal	
No	Name	S/S	%	S/S	%	S/S	%	S/S	%	S/S	%	S/S	%	S/S	%	S/S	%
1	DAI Yuting	0/2										0/1		0/1			
12	DUAN Changrui																
22	HU Xiaoying	6/28	21	0/5		1/5	20	4/4	100	0/3		1/4	25	0/7			
	<b>Total</b>	6/30	20	0/5		1/5	20	4/4	100	0/3		1/5	20	0/8			

Teams Shots	Goals	Saves	Missed	Post	Blocked	Total	%
6m Shots	6	6				12	50
Wing Shots	4	3				7	57
9m Shots	6	3	2		2	13	46
7m Shots	4	1			N/A	5	80
Fast Breaks	3			1		4	75
Breakthroughs	2	3		1		6	33
Empty Goal							
<b>Totals</b>	25	16	2	2	2	47	53

Number of Shots: 47, Scoring Efficiency: 53%



### Match Team Statistics

球队每场统计

Match 22

ANH 27.5 - 26.5 SHH

(12.0 - 10.5) (15.5 - 16.0)

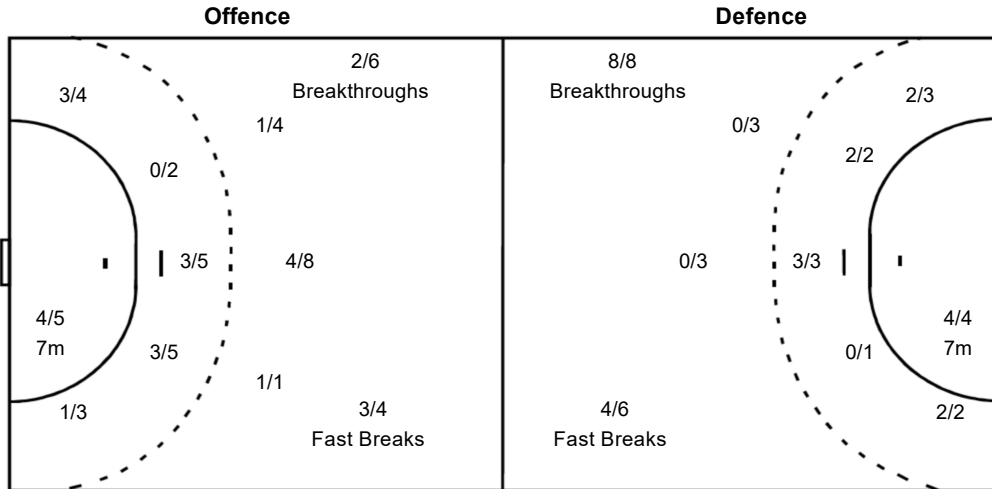
Referee: ZHOU Y (JIS) / ZHANG Z (GUX)

SHH - Shanghai

#### Shots Distribution

Players			Goals / Shots			
1 DAI Yuting	3 JIANG Xintong	5 WANG Jiayi	8 ZHANG Pingping	9 ZHENG Yanan	10 BAO Jiyi	11 LIU Xinyi
	0/1	1/1	0/2		0/1	
	2/2	1/2 1/1 3/5	2/2	2/3		0/1
						1/1
	1-Post					
12 DUAN Changrui	13 WEI Xinxin	15 ZHUANG Xurui	17 YANG Yin	19 WU Manyu	21 ZHANG Leying	22 HU Xiaoying
			1/1			
			1/2			
			1-Missed			
23 ZHANG Yi	28 YANG Xiqi					
	1/1	2/2				
	0/2	0/1				
	2/2	1/2				
	1-Missed 1-Post 2-Blocked					

Team Goals / Shots		
2/2		3/3
0/6	0/1	1/2
10/13	1/1	8/13
2-Missed 2-Post 2-Blocked		



#### Goalkeepers Saves / Shots

0/3	1/1	0/1
0/1	1/1	2/3
2/13	1/3	0/5

1 DAI Yuting		
0/2		

12 DUAN Changrui		

22 HU Xiaoying		
0/3	1/1	0/1
0/1	1/1	2/3
2/11	1/3	0/5

Legend:			
%	Efficiency	+	2 Minute + 2 Minute Suspensions
6m	6 metre Shots	7m	7 metre Shots
BC	Blue Cards	9m	9 metre Shots
FB	Fast Breaks	AS	Assists
RC	Red Cards	EG	Empty Goal
TP	Time Played	No.	Uniform Number
		TO	Turnover
		BT	Breakthroughs
		BS	Blocked Shots
		G/S	Goals/Shots
		N/A	Not Applicable
		S/S	Saves/Shots
		ST	Steals
		WC	Yellow Cards
		2Min	2 Minute Suspensions
		Wing	Wing Shots