



### Match Team Statistics

球队每场统计

Match 26

GUX 30.5 - 33.5 SHH

(15.0 - 14.0) (15.5 - 19.5)

Referee: ZHANG G (GUD) / GONG Z (SHD)

GUX - Guangxi

Players		Shots								Offence		Defence		Punishment				TP	
No	Name	G/S	%	6m	Wing	9m	7m	FB	BT	EG	AS	TO	ST	BS	YC	2Min	RC		BC
3	WANG Yimeng	1/1	100		1/1							1							00:00
4	ZHANG Yunru	0/1				0/1						1							52:53
6	HUANG Weiyu																		33:38
7	YUE Xinhua																		60:00
8	NIE Yifan																		33:38
9	HUANG Yihan	0/1		0/1									1		1	1			60:00
10	WANG Lingna	15/17	88	2/2		2/2	3/3	1/1	7/9			3	1						60:00
11	ZONG Ziyi	2/2	100		2/2														03:25
14	HUANG Xin																		30:00
15	ZHOU Yue	2/3	67	0/1		1/1		1/1				1				1			11:05
16	XING Binyan	0/2				0/1		0/1				3							49:00
17	LI Tingting																		36:31
18	WANG Keke	9/13	69			1/3			8/10		1	5		3					60:00
21	PENG Ruyu																		60:00
22	ZENG Siying																		30:00
66	ZHANG Shijing	0/1				0/1													11:00
	Bench/Team																		
<b>Total</b>		29/41	71	2/4	3/3	4/9	3/3	2/3	15/19		1	14	2	3	1	2			

Goalkeepers		Total Shots		6m Shots		Wing Shots		9m Shots		7m Shots		Fast Breaks		Breakthroughs		Empty Goal	
No	Name	S/S	%	S/S	%	S/S	%	S/S	%	S/S	%	S/S	%	S/S	%	S/S	%
17	LI Tingting																
21	PENG Ruyu	12/42	29	1/6	17	3/9	33	4/9	44	0/3		3/8	38	1/7	14		
<b>Total</b>		12/44	27	1/6	17	3/9	33	4/11	36	0/3		3/8	38	1/7	14		

Teams Shots	Goals	Saves	Missed	Post	Blocked	Total	%
6m Shots	2	1		1		4	50
Wing Shots	3					3	100
9m Shots	4	3	1		1	9	44
7m Shots	3				N/A	3	100
Fast Breaks	2		1			3	67
Breakthroughs	15	3	1			19	79
Empty Goal							
<b>Totals</b>	29	7	3	1	1	41	71

Number of Shots: 41, Scoring Efficiency: 71%





## Match Team Statistics

球队每场统计

Match 26

GUX 30.5 - 33.5 SHH

(15.0 - 14.0) (15.5 - 19.5)

Referee: ZHANG G (GUD) / GONG Z (SHD)

SHH - Shanghai

Players		Shots								Offence		Defence		Punishment				TP		
No	Name	G/S	%	6m	Wing	9m	7m	FB	BT	EG	AS	TO	ST	BS	YC	2Min	RC		BC	
1	DAI Yuting																			02:34
3	JIANG Xintong	1/2	50	1/1	0/1						1	1		1						47:01
5	WANG Jiayi	13/15	87	1/1		3/3		4/5	4/4		1		2							47:06
8	ZHANG Pingping																			52:41
9	ZHENG Yanan	6/9	67	2/2	4/7							1							1	29:22
10	BAO Jiyi	0/2						0/2								1				57:52
11	LIU Xinyi	0/1		0/1								1								05:45
12	DUAN Changrui																			00:00
13	WEI Xinxin	2/4	50	1/1		0/1			1/2			2	1						1	24:49
15	ZHUANG Xurui	2/2	100					1/1	1/1		1	1								12:46
17	YANG Yin	0/1				0/1							1							37:05
19	WU Manyu																			16:59
21	ZHANG Leying																			30:00
22	HU Xiaoying																			50:12
23	ZHANG Yi																			27:36
28	YANG Xiqi	7/14	50		2/3	2/8	3/3				1									30:00
	Bench/Team																			
<b>Total</b>		31/50	62	5/6	6/11	5/13	3/3	5/8	6/7		4	7	3	1	1		3			

Goalkeepers		Total Shots		6m Shots		Wing Shots		9m Shots		7m Shots		Fast Breaks		Breakthroughs		Empty Goal	
No	Name	S/S	%	S/S	%	S/S	%	S/S	%	S/S	%	S/S	%	S/S	%	S/S	%
1	DAI Yuting	2/13	15	0/1		0/1		1/1	100			0/1		1/9		11	
12	DUAN Changrui																
22	HU Xiaoying	4/20	20	1/2	50	0/2		1/5	20	0/1		0/1		2/9		22	
<b>Total</b>		6/34	18	1/3	33	0/3		2/7	29	0/1		0/2		3/18		17	

Teams Shots	Goals	Saves	Missed	Post	Blocked	Total	%
6m Shots	5	1				6	83
Wing Shots	6	3	1	1		11	55
9m Shots	5	4	1	1	2	13	38
7m Shots	3				N/A	3	100
Fast Breaks	5	3				8	63
Breakthroughs	6	1				7	86
Empty Goal							
<b>Totals</b>	30	12	2	2	2	48	63

Number of Shots: 48, Scoring Efficiency: 63%



### Match Team Statistics

球队每场统计

Match 26

GUX 30.5 - 33.5 SHH

(15.0 - 14.0) (15.5 - 19.5)

Referee: ZHANG G (GUD) / GONG Z (SHD)

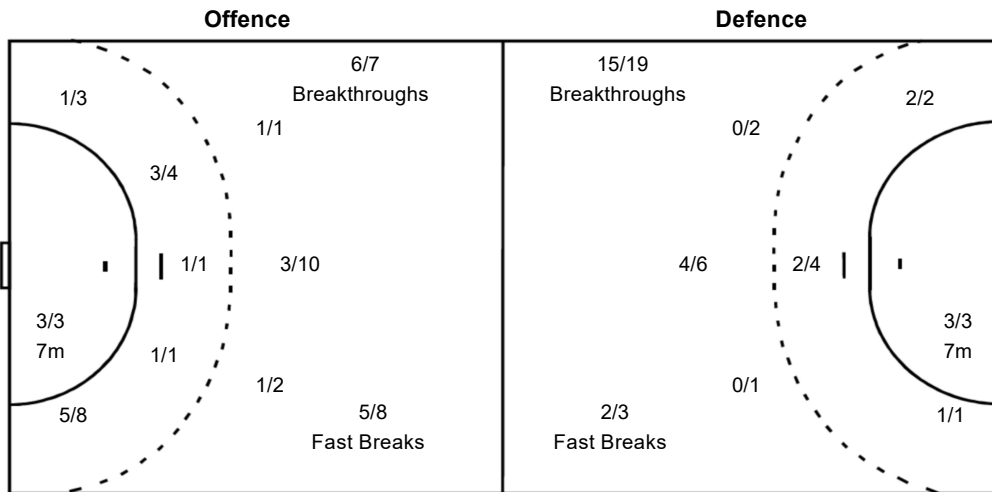
SHH - Shanghai

#### Shots Distribution

1 DAI Yuting			3 JIANG Xintong			5 WANG Jiayi			8 ZHANG Pingping			9 ZHENG Yanan			10 BAO Jiyi			11 LIU Xinyi		
						1/1		3/3							0/1					
						1/2						0/1		2/2						
			0/1		1/1	2/2		6/6				2/2		2/2			0/1	0/1		
												1-Missed 1-Post								
12 DUAN Changrui			13 WEI Xinxin			15 ZHUANG Xurui			17 YANG Yin			19 WU Manyu			21 ZHANG Leying			22 HU Xiaoying		
								2/2												
			2/4						0/1											
23 ZHANG Yi			28 YANG Xiqi																	
						1/1														
						4/5		1/1												
						1-Missed 1-Post 2-Blocked														

#### Team Goals / Shots

1/2	0/1	4/5
2/4		4/4
10/15	0/1	10/11
2-Missed 2-Post 2-Blocked		



#### Goalkeepers Saves / Shots

0/1	0/1	1/3
0/4	2/2	0/4
2/8	0/3	1/7

1 DAI Yuting		
		1/2
0/1	1/1	0/2
0/2	0/1	0/4

12 DUAN Changrui		

22 HU Xiaoying		
0/1	0/1	0/1
0/3	1/1	0/2
2/6	0/2	1/3

Legend:					
%	Efficiency	+	2 Minute + 2 Minute Suspensions	2Min	2 Minute Suspensions
6m	6 metre Shots	7m	7 metre Shots	AS	Assists
BC	Blue Cards	BS	Blocked Shots	EG	Empty Goal
FB	Fast Breaks	G/S	Goals/Shots	No.	Uniform Number
RC	Red Cards	S/S	Saves/Shots	ST	Steals
TP	Time Played	Wing	Wing Shots	YC	Yellow Cards
				BT	Breakthroughs
				N/A	Not Applicable
				TO	Turnover