



Match Team Statistics

球队每场统计

Match 31

SHH 35.5 - 21.5 CHQ

(17.0 - 8.5) (18.5 - 13.0)

Referee: NI Z (GUX) / SONG Y (ANH)

SHH - Shanghai

Players		Shots									Offence		Defence		Punishment				TP
No	Name	G/S	%	6m	Wing	9m	7m	FB	BT	EG	AS	TO	ST	BS	YC	2Min	RC	BC	
1	DAI Yuting																		22:04
3	JIANG Xintong	2/3	67	1/2				1/1				2			1				47:01
5	WANG Jiayi	6/9	67	1/2	0/1			1/1	3/4			1							47:06
8	ZHANG Pingping																		52:41
9	ZHENG Yanan	3/4	75		3/4							1			1				52:13
10	BAO Jiyi	1/2	50	1/1				0/1				1	2			1			57:52
11	LIU Xinyi	1/1	100						1/1			2							05:45
12	DUAN Changrui																		00:00
13	WEI Xinxin	0/1																	07:52
15	ZHUANG Xurui	12/14	86	3/3	1/1	4/6		2/2	2/2			4	1			1			12:46
17	YANG Yin																		37:05
19	WU Manyu																		16:59
21	ZHANG Leying											1							04:29
22	HU Xiaoying																		50:12
23	ZHANG Yi																		27:36
28	YANG Xiqi	8/11	73	3/3	0/1	4/6		1/1				2	2	1			1		30:00
	Bench/Team																		
Total		33/45	73	9/11	4/7	8/12		5/6	6/7			2	14	4		2	3		

Goalkeepers		Total Shots		6m Shots		Wing Shots		9m Shots		7m Shots		Fast Breaks		Breakthroughs		Empty Goal	
No	Name	S/S	%	S/S	%	S/S	%	S/S	%	S/S	%	S/S	%	S/S	%	S/S	%
1	DAI Yuting	4/12	33	1/1	100	1/1	100	2/5	40	0/1		0/1		0/3			
12	DUAN Changrui																
22	HU Xiaoying	3/10	30	0/1		2/3	67	1/3	33			0/1		0/2			
Total		7/22	32	1/2	50	3/4	75	3/8	38	0/1		0/2		0/5			

Teams Shots	Goals	Saves	Missed	Post	Blocked	Total	%
6m Shots	9	1			1	11	82
Wing Shots	4	2		1		7	57
9m Shots	8	1	1	2		12	67
7m Shots					N/A		
Fast Breaks	5	1				6	83
Breakthroughs	6	1				7	86
Empty Goal							
Totals	32	6	1	3	1	43	74

Number of Shots: 43, Scoring Efficiency: 74%



Match Team Statistics

球队每场统计

Match 31

SHH 35.5 - 21.5 CHQ

(17.0 - 8.5) (18.5 - 13.0)

Referee: NI Z (GUX) / SONG Y (ANH)

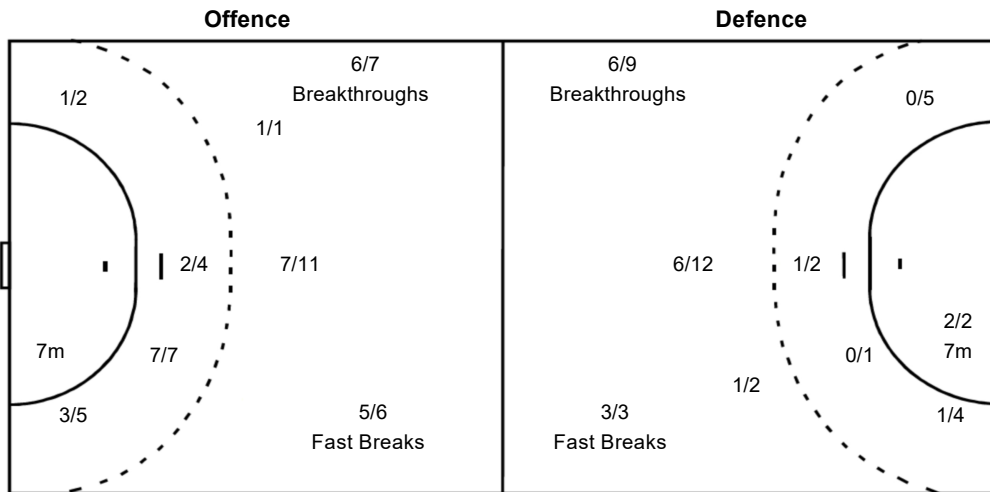
SHH - Shanghai

Shots Distribution

Players			Goals / Shots			
1 DAI Yuting	3 JIANG Xintong	5 WANG Jiayi	8 ZHANG Pingping	9 ZHENG Yanan	10 BAO Jiyi	11 LIU Xinyi
	1/1	0/1	2/2	0/1	1/1	
		1/1	2/2	1/1		1/1
			1-Post 1-Blocked			
12 DUAN Changrui	13 WEI Xinxin	15 ZHUANG Xurui	17 YANG Yin	19 WU Manyu	21 ZHANG Leying	22 HU Xiaoying
	0/1	0/1	1/1			
		4/4	1/1	6/6		
			1-Post			
23 ZHANG Yi	28 YANG Xiqi					
		3/3				
		2/2	2/2	1/2		
		1-Missed	1-Post			

Team Goals / Shots

1/1	0/1	4/4
0/2		2/3
9/9	4/5	13/15
1-Missed	3-Post	1-Blocked



Goalkeepers Saves / Shots

0/2	0/1	0/1
1/1		2/2
2/9	1/2	3/6

1 DAI Yuting		
0/1	0/1	
1/1		
2/4	0/1	2/5

12 DUAN Changrui		

22 HU Xiaoying		
0/1		0/1
		2/2
0/5	1/1	1/1

Legend:					
%	Efficiency	+	2 Minute + 2 Minute Suspensions	2Min	2 Minute Suspensions
6m	6 metre Shots	7m	7 metre Shots	AS	Assists
BC	Blue Cards	BS	Blocked Shots	EG	Empty Goal
FB	Fast Breaks	G/S	Goals/Shots	No.	Uniform Number
RC	Red Cards	S/S	Saves/Shots	ST	Steals
TP	Time Played	Wing	Wing Shots	YC	Yellow Cards
				BT	Breakthroughs
				N/A	Not Applicable
				TO	Turnover



Match Team Statistics

球队每场统计

Match 31

SHH 35.5 - 21.5 CHQ

(17.0 - 8.5) (18.5 - 13.0)

Referee: NI Z (GUX) / SONG Y (ANH)

CHQ - Chongqing

Players		Shots									Offence		Defence		Punishment				TP	
No	Name	G/S	%	6m	Wing	9m	7m	FB	BT	EG	AS	TO	ST	BS	YC	2Min	RC	BC		
5	ZHANG Yue	5/7	71			2/4			3/3				1							39:50
6	CHEN Xinyu	1/2	50						1/1											48:02
8	WANG Zimo	1/5	20		0/3			1/1	0/1					1						31:21
10	LI Wenhua																			06:42
11	MEI Xinyang	1/5	20			0/3		1/1				1	1							23:31
12	FAN Wenna																			00:00
15	LI Kaixin	1/2	50		0/1			1/1												01:56
16	SUN Yihan											1								38:44
17	YANG Yue													1						21:10
18	TAO Lude	6/8	75	1/2		5/6						7								21:02
21	WANG Cailin	2/4	50						2/4			1					2			31:55
22	YANG Jie	1/4	25	0/1	1/3								1							57:10
23	LIU Xinhui	2/4	50		0/1	0/1	2/2					1	1							34:20
26	LI Baoyi																			11:54
77	ZHANG Jing	0/1			0/1							1								28:35
	Bench/Team																			
Total		20/42	48	1/3	1/9	7/14	2/2	3/3	6/9			1	14	2	1		2			

Goalkeepers		Total Shots		6m Shots		Wing Shots		9m Shots		7m Shots		Fast Breaks		Breakthroughs		Empty Goal	
No	Name	S/S	%	S/S	%	S/S	%	S/S	%	S/S	%	S/S	%	S/S	%	S/S	%
12	FAN Wenna	4/13	31	1/2	50	2/3	67	0/2				1/4	25	0/2			
16	SUN Yihan	2/25	8	0/8		0/3		1/7	14			0/2		1/5	20		
Total		6/39	15	1/11	9	2/6	33	1/9	11			1/6	17	1/7	14		

Teams Shots	Goals	Saves	Missed	Post	Blocked	Total	%
6m Shots	1	2				3	33
Wing Shots	1	5	1	2		9	11
9m Shots	7	3	3	1		14	50
7m Shots	2				N/A	2	100
Fast Breaks	3					3	100
Breakthroughs	6	1	1	1		9	67
Empty Goal							
Totals	20	11	5	4		40	50

Number of Shots: 40, Scoring Efficiency: 50%



Match Team Statistics

球队每场统计

Match 31

SHH 35.5 - 21.5 CHQ

(17.0 - 8.5) (18.5 - 13.0)

Referee: NI Z (GUX) / SONG Y (ANH)

CHQ - Chongqing

Shots Distribution

Players

Goals / Shots

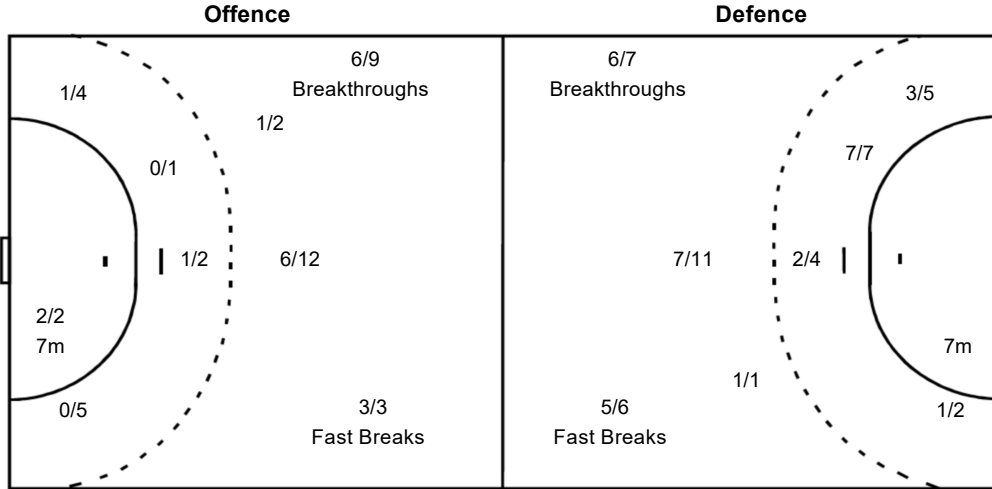
5 ZHANG Yue	6 CHEN Xinyu	8 WANG Zimo	10 LI Wenhua	11 MEI Xinyang	12 FAN Wenna	15 LI Kaixin
1/1		1/1		1/1		
1/1	3/4	1/2		0/1	0/1	1/2
1-Missed		1-Missed 1-Post		1-Missed		
16 SUN Yihan	17 YANG Yue	18 TAO Lude	21 WANG Cailin	22 YANG Jie	23 LIU Xinhui	26 LI Baoyi
		1/1	1/1	1/1		1/2
		5/5	0/1	1/1	0/1	0/1
		1-Post	1-Post	1-Missed	1-Missed	
77 ZHANG Jing						
1-Post						

Goalkeepers
Saves / Shots

0/1	1/1	0/4
2/2		1/3
0/9	1/5	2/15

Team
Goals / Shots

2/2	1/1	1/1
1/2		2/4
8/10	2/5	3/8
5-Missed	4-Post	



12 FAN Wenna

		0/1
2/2		1/1
0/2		2/8

16 SUN Yihan

0/1	1/1	0/3
		0/2
0/7	1/5	0/7

Legend:

%	Efficiency	+	2 Minute + 2 Minute Suspensions	2Min	2 Minute Suspensions
6m	6 metre Shots	7m	7 metre Shots	AS	Asists
BC	Blue Cards	BS	Blocked Shots	EG	Empty Goal
FB	Fast Breaks	G/S	Goals/Shots	No.	Uniform Number
RC	Red Cards	S/S	Saves/Shots	ST	Steals
TP	Time Played	Wing	Wing Shots	YC	Yellow Cards
				9m	9 metre Shots
				BT	Breakthroughs
				N/A	Not Applicable
				TO	Turnover