



### Match Team Statistics

球队每场统计

Match 4

SHH 28.5 - 16.0 CHQ

(12.0 - 6.0) (16.5 - 10.0)

Referee: ZHANG Z (GUX) / SONG Y (ANH)

SHH - Shanghai

Players		Shots								Offence		Defence		Punishment			TP			
No	Name	G/S	%	6m	Wing	9m	7m	FB	BT	EG	AS	TO	ST	BS	YC	2Min		RC	BC	
3	JIANG Xintong	0/4				0/3			0/1			1		1						47:01
5	WANG Jiayi	6/12	50	0/1		2/5		3/4	1/2				1	1	1	2				47:06
8	ZHANG Pingping	4/7	57	1/1	1/4			1/1	1/1				1			1				52:41
9	ZHENG Yanan																			
10	BAO Jiayi	4/7	57		1/3			3/4				2	3							57:52
11	LIU Xinyi	1/1	100						1/1											05:45
12	DUAN Changrui																			00:00
15	ZHUANG Xurui																			
17	YANG Yin	0/1							0/1			2								37:05
18	XU Anqi	4/5	80	2/2		1/1	1/1		0/1				1			2				42:58
19	WU Manyu																			
22	HU Xiaoying										1									50:12
23	ZHANG Yi	3/5	60			0/1	2/2		1/2			1	1			1				27:36
28	YANG Xiqi	3/10	30			1/6	1/1	0/1	0/1		1		2							30:00
	Bench/Team																			
<b>Total</b>		25/52	48	3/4	2/7	4/16	4/4	7/10	4/10		2	6	9	2	1	6				

Goalkeepers		Total Shots		6m Shots		Wing Shots		9m Shots		7m Shots		Fast Breaks		Breakthroughs		Empty Goal	
No	Name	S/S	%	S/S	%	S/S	%	S/S	%	S/S	%	S/S	%	S/S	%	S/S	%
22	HU Xiaoying	7/20	35	2/4	50	1/4	25	1/3	33			1/2	50	2/7	29		
<b>Total</b>		9/25	36	2/4	50	2/6	33	1/4	25			1/3	33	3/8	38		

Teams Shots	Goals	Saves	Missed	Post	Blocked	Total	%
6m Shots	3			1		4	75
Wing Shots	2	2	1	2		7	29
9m Shots	5	7	1	3	1	17	29
7m Shots	4				N/A	4	100
Fast Breaks	7		2	1		10	70
Breakthroughs	4	5		1		10	40
Empty Goal							
<b>Totals</b>	25	14	4	8	1	52	48

Number of Shots: 52, Scoring Efficiency: 48%



### Match Team Statistics

球队每场统计

#### Match 4

SHH 28.5 - 16.0 CHQ  
(12.0 - 6.0) (16.5 - 10.0)

Referee: ZHANG Z (GUX) / SONG Y (ANH)

SHH - Shanghai

#### Shots Distribution

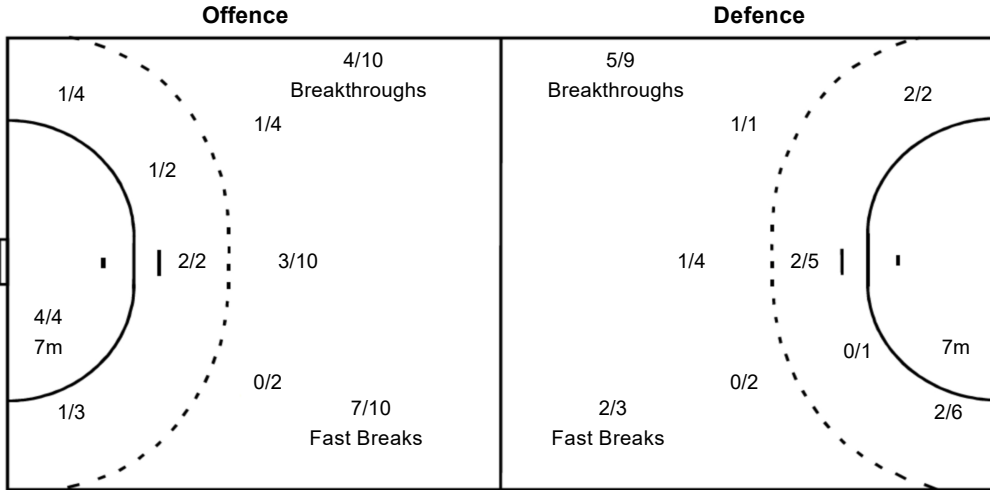
#### Players

#### Goals / Shots

3 JIANG Xintong	5 WANG Jiayi	8 ZHANG Pingping	9 ZHENG Yanan	10 BAO Jiyi	11 LIU Xinyi	12 DUAN Changrui
0/2	3/4	1/1				
0/1	0/1	2/2		1/2		
	3-Post	1-Missed 1-Post		1-Missed 1-Post		
15 ZHUANG Xurui	17 YANG Yin	18 XU Anqi	19 WU Manyu	22 HU Xiaoying	23 ZHANG Yi	28 YANG Xiqi
					1/1	1/1
			1/1		0/1	1/1
	1-Post	1/1	2/3		1-Missed	1-Missed 2-Post 1-Blocked

#### Team Goals / Shots

3/3	0/1	3/3
5/9		3/4
4/7	0/1	7/11
4-Missed	8-Post	1-Blocked



#### Goalkeepers

#### Saves / Shots

2/4	0/2	1/2
1/3		1/3
1/5		3/5
12 DUAN Changrui		
		1/1
0/1		1/1
0/1		
22 HU Xiaoying		
2/4	0/2	0/1
1/2		0/2
1/4		3/5

#### Legend:

%	Efficiency	+	2 Minute + 2 Minute Suspensions	2Min	2 Minute Suspensions
6m	6 metre Shots	7m	7 metre Shots	AS	Assists
BC	Blue Cards	BS	Blocked Shots	EG	Empty Goal
FB	Fast Breaks	G/S	Goals/Shots	No.	Uniform Number
RC	Red Cards	S/S	Saves/Shots	ST	Steals
TP	Time Played	Wing	Wing Shots	YC	Yellow Cards
				BT	Breakthroughs
				N/A	Not Applicable
				TO	Turnover



### Match Team Statistics

球队每场统计

Match 4

SHH 28.5 - 16.0 CHQ

(12.0 - 6.0) (16.5 - 10.0)

Referee: ZHANG Z (GUX) / SONG Y (ANH)

CHQ - Chongqing

Players		Shots								Offence		Defence		Punishment				TP		
No	Name	G/S	%	6m	Wing	9m	7m	FB	BT	EG	AS	TO	ST	BS	YC	2Min	RC		BC	
5	ZHANG Yue	0/6		0/1		0/3			0/1			2								39:50
6	CHEN Xinyu	1/3	33	1/2								1			1	1				48:02
8	WANG Zimo																			
10	LI Wenhua	1/1	100		1/1									1		1				06:42
11	MEI Xinyang	6/7	86			1/2		1/1	4/4			4								23:31
12	FAN Wenna																			00:00
15	LI Kaixin	0/1			0/1								1							01:56
16	SUN Yihan											1								38:44
17	YANG Yue	1/1	100		1/1							1	1			1				21:10
18	TAO Lude	1/2	50			1/1			0/1			2								21:02
21	WANG Cailin	1/3	33						1/3		1	5								31:55
22	YANG Jie	1/4	25		1/4										1	1				57:10
23	LIU Xinhui	1/4	25	1/2		0/1		0/1				4								34:20
26	LI Baoyi	1/2	50	0/1				1/1								1				11:54
77	ZHANG Jing	1/1	100		1/1															28:35
	Bench/Team																			
<b>Total</b>		15/35	43	2/6	4/8	2/7		2/3	5/9		1	20	2	1	2	5				

Goalkeepers		Total Shots		6m Shots		Wing Shots		9m Shots		7m Shots		Fast Breaks		Breakthroughs		Empty Goal	
No	Name	S/S	%	S/S	%	S/S	%	S/S	%	S/S	%	S/S	%	S/S	%	S/S	%
12	FAN Wenna	0/4		0/1						0/1				0/2			
16	SUN Yihan	14/34	41	0/2		2/4	50	7/11	64	0/3		0/7		5/7	71		
<b>Total</b>		14/39	36	0/3		2/4	50	7/12	58	0/4		0/7		5/9	56		

Teams Shots	Goals	Saves	Missed	Post	Blocked	Total	%
6m Shots	2	2	1	1		6	33
Wing Shots	4	2	1	1		8	50
9m Shots	2	1	3	1	2	9	22
7m Shots					N/A		
Fast Breaks	2	1				3	67
Breakthroughs	5	3	1			9	56
Empty Goal							
<b>Totals</b>	15	9	6	3	2	35	43

Number of Shots: 35, Scoring Efficiency: 43%



### Match Team Statistics

球队每场统计

Match 4

SHH 28.5 - 16.0 CHQ

(12.0 - 6.0) (16.5 - 10.0)

Referee: ZHANG Z (GUX) / SONG Y (ANH)

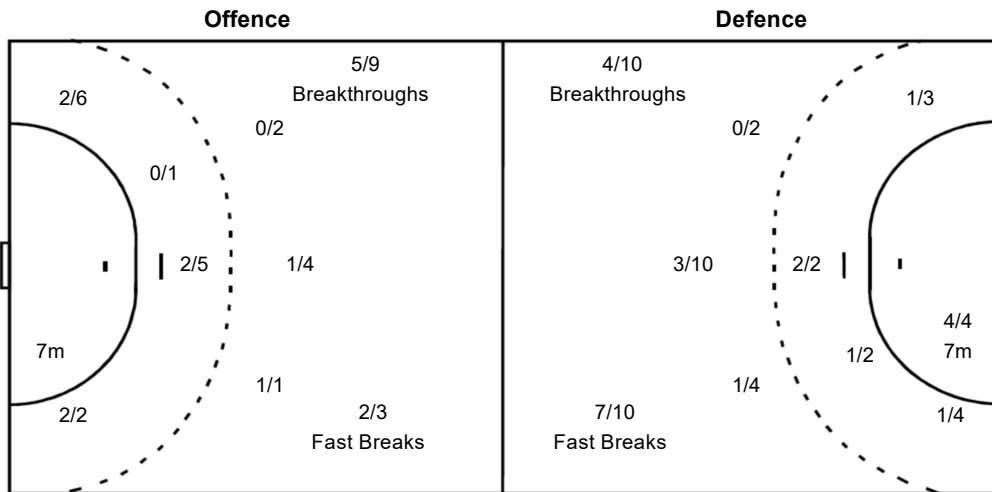
CHQ - Chongqing

#### Shots Distribution

5 ZHANG Yue			6 CHEN Xinyu			8 WANG Zimo			10 LI Wenhua			11 MEI Xinyang			12 FAN Wenna			15 LI Kaixin		
									1/1			2/2	1/1							
		0/2	1/1		0/1							2/2		1/1						0/1
2-Missed	1-Post												1-Post							
16 SUN Yihan			17 YANG Yue			18 TAO Lude			21 WANG Cailin			22 YANG Jie			23 LIU Xinhui			26 LI Baoyi		
					1/1	1/1		0/1	0/1			0/1			0/1					
											1/1			1/1	0/1					1/1
									1-Missed			1-Missed	1-Post				1-Blocked			1-Missed
77 ZHANG Jing																				
1/1																				

#### Team Goals / Shots

2/4	2/2	1/2
2/3		2/3
4/5		2/5
5-Missed	3-Post	1-Blocked



#### Goalkeepers Saves / Shots

0/3	1/1	0/3
4/9		1/4
3/7	1/1	4/11

12 FAN Wenna		
		0/1
		0/1
0/1		0/1

16 SUN Yihan		
0/3	1/1	0/2
4/9		1/3
3/6	1/1	4/10

Legend:			
%	Efficiency	+	2 Minute + 2 Minute Suspensions
6m	6 metre Shots	7m	7 metre Shots
BC	Blue Cards	9m	9 metre Shots
FB	Fast Breaks	AS	Assists
RC	Red Cards	EG	Empty Goal
TP	Time Played	No.	Uniform Number
		TO	Turnover
		BT	Breakthroughs
		BS	Blocked Shots
		G/S	Goals/Shots
		N/A	Not Applicable
		S/S	Saves/Shots
		ST	Steals
		WC	Yellow Cards
		Wing	Wing Shots