

Match Team Statistics

球队每场统计

Match 27

JPN 28 - 23 CHN

(12 - 12) (16 - 11)

Referee: ALMAWT H / MARHOON SM (BRN)

JPN - Japan

Players		Shots								Offence		Defence		Punishment				TP		
No	Name	G/S	%	6m	Wing	9m	7m	FB	BT	EG	AS	TO	ST	BS	YC	2Min	RC		BC	
1	SAKAI Motoki																			13:22
2	KASAHARA Kenya																			22:28
3	NARITA Kohei																			33:30
5	MOTOKI Hiroki	8/9	89	1/1	2/2	1/1	3/4	1/1				1				1				53:54
6	AGARIE Yuto	2/4	50	1/2			0/1		1/1		1	1								20:30
7	SUGIOKA Naoki	2/3	67		1/1		1/2					1								44:57
8	YOSHINO Tatsuki	3/6	50	2/2		1/4						2	1				1			30:03
9	TAMAKAWA Hiroyasu	2/3	67	2/3													1			34:53
10	TOKUDA Shinnosuke	3/5	60	2/2		1/1	0/1		0/1											48:04
12	NAKAMURA Takumi											1								33:38
13	YAMADA Shinya																			
14	BAIG Adam Yuki	4/13	31	1/1		3/11			0/1		1	2			1					36:32
15	KAWAHARA Shuto	2/2	100			1/1		1/1												09:20
16	KANI Daiki	0/1				0/1											1			02:43
33	TSUTAYA Taiga	1/1	100				1/1													01:57
34	IZUMOTO Shin	1/1	100			1/1														15:12
	Bench/Team																			
	Total	28/48	58	9/11	3/3	8/20	5/9	2/2	1/3		2	8	1		1	4				

Goalkeepers		Total Shots		6m Shots		Wing Shots		9m Shots		7m Shots		Fast Breaks		Breakthroughs		Empty Goal	
No	Name	S/S	%	S/S	%	S/S	%	S/S	%	S/S	%	S/S	%	S/S	%	S/S	%
1	SAKAI Motoki	1/7	14	0/2		0/1		1/1	100	0/3							
12	NAKAMURA Takumi	7/20	35	2/9	22			5/7	71	0/2				0/2			
	Total	8/27	30	2/11	18	0/1		6/8	75	0/5				0/2			

Teams Shots	Goals	Saves	Missed	Post	Blocked	Total	%
6m Shots	9	2				11	82
Wing Shots	3					3	100
9m Shots	8	7	1	1	3	20	40
7m Shots	5	4			N/A	9	56
Fast Breaks	2					2	100
Breakthroughs	1	2				3	33
Empty Goal							
Totals	28	15	1	1	3	48	58

Number of Shots: 48, Scoring Efficiency: 58%

Match Team Statistics

球队每场统计

Match 27

JPN 28 - 23 CHN

(12 - 12) (16 - 11)

Referee: ALMAWT H / MARHOON SM (BRN)

JPN - Japan

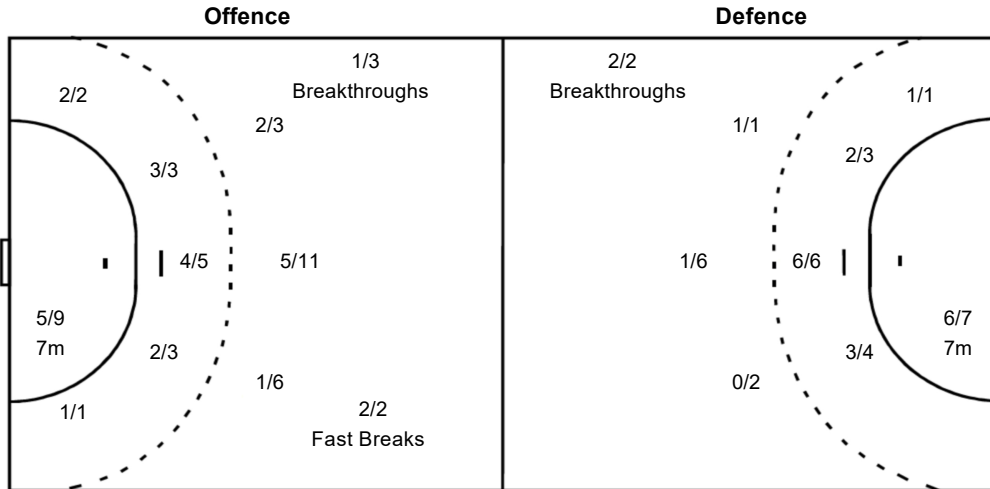
Shots Distribution

Players			Goals / Shots			
1 SAKAI Motoki	2 KASAHARA Kenya	3 NARITA Kohei	5 MOTOKI Hiroki	6 AGARIE Yuto	7 SUGIOKA Naoki	8 YOSHINO Tatsuki
			1/1			0/1
			1/2		0/1	
			2/2	2/2	1/1	2/2
						1-Missed 1-Post
9 TAMAKAWA Hiroyasu	10 TOKUDA Shinnosuke	12 NAKAMURA Takumi	13 YAMADA Shinya	14 BAIG Adam Yuki	15 KAWAHARA Shuto	16 KANI Daiki
	1/1			1/2		
0/1	1/1			0/1		
1/1	0/1			2/3		0/1
	1/1			1/1	0/1	
				0/2	2/2	
				3-Blocked		
33 TSUTAYA Taiga	34 IZUMOTO Shin					
	1/1					
						1/1

Team Goals / Shots

2/3	2/4	1/1
3/9		
7/8	3/6	10/12

1-Missed 1-Post 3-Blocked



Goalkeepers Saves / Shots

0/4	1/1	0/4
3/4	1/1	0/1
2/5	1/1	1/7

1 SAKAI Motoki

0/2	0/2
1/1	
	0/2

12 NAKAMURA Takumi

0/2	1/1	0/2
2/3	1/1	0/1
2/5	1/1	1/5

Legend:

%	Efficiency	+	2 Minute + 2 Minute Suspensions	2Min	2 Minute Suspensions
6m	6 metre Shots	7m	7 metre Shots	AS	Assists
BC	Blue Cards	BS	Blocked Shots	EG	Empty Goal
FB	Fast Breaks	G/S	Goals/Shots	No.	Uniform Number
RC	Red Cards	S/S	Saves/Shots	ST	Steals
TP	Time Played	Wing	Wing Shots	YC	Yellow Cards
				N/A	Not Applicable
				BT	Breakthroughs

Match Team Statistics

球队每场统计

Match 27

JPN 28 - 23 CHN

(12 - 12) (16 - 11)

Referee: ALMAWT H / MARHOON SM (BRN)

CHN - China

Players		Shots									Offence		Defence		Punishment			TP	
No	Name	G/S	%	6m	Wing	9m	7m	FB	BT	EG	AS	TO	ST	BS	YC	2Min	RC		BC
2	ZHANG Tianjin	1/1	100		1/1											1			20:44
5	HE Zheng																1		02:00
7	SUN Fangwei																		
8	XIE Qinglong	3/3	100	3/3								3				1			25:30
10	CHENG Haijin																		
11	ZHAO Wenxuan																		
12	WANG Quan																		55:13
15	ZHANG Jianjie	2/8	25			1/6						2		2					47:02
16	HE Xinian																		02:39
17	HU Jinming	2/2	100	2/2									1						37:36
18	LI Shuang	4/5	80	3/3		0/1			1/1		1	4	1	1					55:52
19	LIU Zhaoliang	1/1	100	1/1								2							45:02
22	HUANG Peijie											1			1				50:18
23	CHEN Xu														1				22:38
26	RAO Yuanyuan	2/2	100	1/1					1/1										11:00
27	ZHU Shijie	8/12	67	1/3		1/2	6/7				3	2							37:35
	Bench/Team														1				
Total		23/34	68	11/13	1/1	2/9	6/7		2/2		4	15	1	3	3	2	1		

Goalkeepers		Total Shots		6m Shots		Wing Shots		9m Shots		7m Shots		Fast Breaks		Breakthroughs		Empty Goal	
No	Name	S/S	%	S/S	%	S/S	%	S/S	%	S/S	%	S/S	%	S/S	%	S/S	%
12	WANG Quan	13/38	34	2/10	20	0/3		7/15	47	2/5	40	0/2		2/3	67		
16	HE Xinian	2/5	40	0/1						2/4	50						
Total		15/46	33	2/11	18	0/3		7/18	39	4/9	44	0/2		2/3	67		

Teams Shots	Goals	Saves	Missed	Post	Blocked	Total	%
6m Shots	11	2				13	85
Wing Shots	1					1	100
9m Shots	2	6	1			9	22
7m Shots	6			1	N/A	7	86
Fast Breaks							
Breakthroughs	2					2	100
Empty Goal							
Totals	22	8	1	1		32	69

Number of Shots: 32, Scoring Efficiency: 69%

Match Team Statistics

球队每场统计

Match 27

JPN 28 - 23 CHN

(12 - 12) (16 - 11)

Referee: ALMAWT H / MARHOON SM (BRN)

CHN - China

Shots Distribution

Players

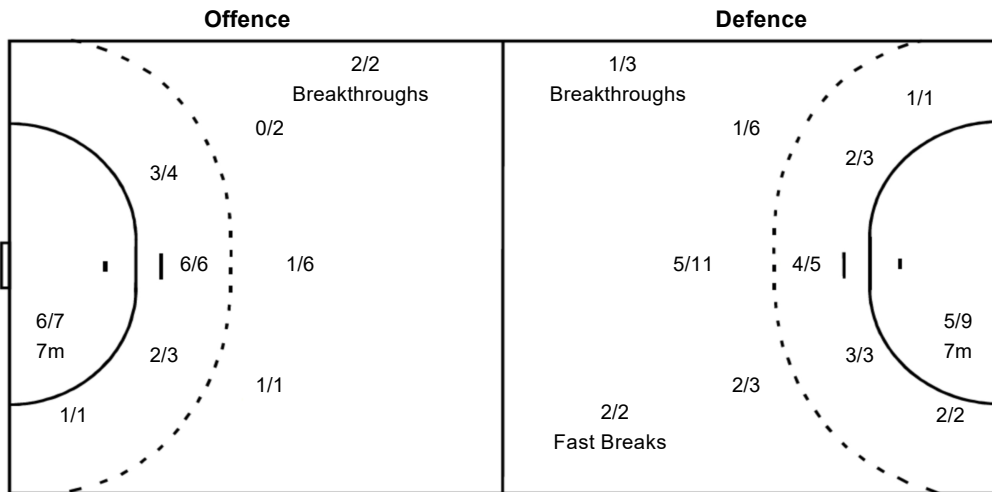
Goals / Shots

2 ZHANG Tianjin	5 HE Zheng	7 SUN Fangwei	8 XIE Qinglong	10 CHENG Haijin	11 ZHAO Wenxuan	12 WANG Quan
			1/1 2/2			
15 ZHANG Jianjie	16 HE Xinian	17 HU Jinming	18 LI Shuang	19 LIU Zhaoliang	22 HUANG Peijie	23 CHEN Xu
0/2	0/1	1/1	1/1	1/1		
1/2			1/1			
1-Missed						
26 RAO Yuanyuan	27 ZHU Shijie					
1/1	3/3	2/2				
	0/1					
1/1	1/1	0/1	2/3			
	1-Post					

Team Goals / Shots

4/4	0/1	4/4
2/5	0/1	1/1
5/7	1/2	6/7

1-Missed 1-Post



Goalkeepers Saves / Shots

1/3	2/4	0/1
6/9		
1/8	3/6	2/12

12 WANG Quan

1/3	2/3	0/1
4/7		
1/7	3/5	2/12

16 HE Xinian

2/2	0/1
0/1	0/1

Legend:

% Efficiency	+ 2 Minute + 2 Minute Suspensions	2Min 2 Minute Suspensions
6m 6 metre Shots	7m 7 metre Shots	AS Assists
BC Blue Cards	BS Blocked Shots	EG Empty Goal
FB Fast Breaks	G/S Goals/Shots	No. Uniform Number
RC Red Cards	S/S Saves/Shots	TO Turnover
TP Time Played	Wing Wing Shots	YC Yellow Cards
	9m 9 metre Shots	
	BT Breakthroughs	
	N/A Not Applicable	
	ST Steals	