

Match Team Statistics

球队每场统计

Match 24

THA 14 - 45 KOR

(9 - 21) (5 - 24)

Referee: LIU Y / XU X (CHN)

THA - Thailand

Players		Shots									Offence		Defence		Punishment				TP	
No	Name	G/S	%	6m	Wing	9m	7m	FB	BT	EG	AS	TO	ST	BS	YC	2Min	RC	BC		
3	LAOPHILA Patcharamai																			
5	KHROPBUABAN Natthawan	2/4	50				1/2		1/2		1	9								50:52
6	RATTANAPIROM Natthida	0/1			0/1							1								16:37
7	MAIMAN Jirarat	3/4	75	2/2					1/2			7								55:32
8	KAHAN Sakonsupa																			06:19
11	BUNRUEANG Rotsukhon																			05:18
12	BUABAN Thanawadee																			18:45
18	KLANGSUWAN Pornsawan	1/1	100		1/1															54:26
20	JUNMANEE Preechaya	3/5	60	1/2			1/2		1/1			5	1				1			57:55
22	WICHASANG Wantanee	5/18	28	1/3		1/8	2/2	1/1	0/2			6								54:41
24	SUPAKORN Waruephat																			41:14
27	SEETHONG Pimpatcha																			
33	CHAMPATHONG Sainam	0/1			0/1												1			04:48
35	BUTCHAN Wanna																			14:04
88	KAIWISSETTHAM Phetcharat											1								36:19
Bench/Team																				
Total		14/34	41	4/7	1/3	1/8	4/6	1/1	3/7		1	29	1				2			

Goalkeepers		Total Shots		6m Shots		Wing Shots		9m Shots		7m Shots		Fast Breaks		Breakthroughs		Empty Goal	
No	Name	S/S	%	S/S	%	S/S	%	S/S	%	S/S	%	S/S	%	S/S	%	S/S	%
12	BUABAN Thanawadee	3/17	18	2/5	40	0/2		0/2		0/2		1/5	20	0/1			
24	SUPAKORN Waruephat	4/35	11	1/5	20	2/11	18			0/1		0/14		1/4	25		
Total		7/52	13	3/10	30	2/13	15	0/2		0/3		1/19	5	1/5	20		

Teams Shots	Goals	Saves	Missed	Post	Blocked	Total	%
6m Shots	4	1	1	1		7	57
Wing Shots	1	1	1			3	33
9m Shots	1	6	1			8	13
7m Shots	4	1		1	N/A	6	67
Fast Breaks	1					1	100
Breakthroughs	3	3	1			7	43
Empty Goal							
Totals	14	12	4	2		32	44

Number of Shots: 32, Scoring Efficiency: 44%

Match Team Statistics

球队每场统计

Match 24

THA 14 - 45 KOR

(9 - 21) (5 - 24)

Referee: LIU Y / XU X (CHN)

THA - Thailand

Shots Distribution

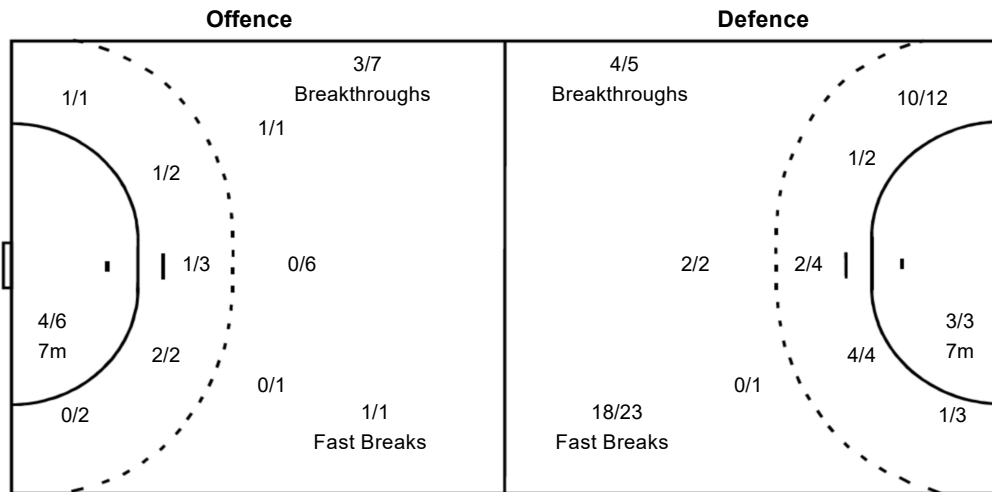
Players		
Goals / Shots		
3 LAOPHILA Patcharamai	5 KHROPBUABAN Natthawa	6 RATTANAPIROM Natthida
	1/1	0/1
	1/1	
	1-Missed	
7 MAIMAN Jirarat	8 KAHAN Sakonsupa	11 BUNRUEANG Rotsukhon
	0/1	1/1
		2/2
12 BUABAN Thanawadee		
18 KLANGSUWAN Pornsaw	20 JUNMANEE Preechaya	22 WICHASANG Wantanee
	1/1	1/1
1/1		1/1
	2-Post	
24 SUPAKORN Waruephat	27 SEETHONG Pimpacha	33 CHAMPATHONG Sainam
	0/2	0/1
	3/5	1/2
	1/5	
	2-Missed	
35 BUTCHAN Wanna		
		1-Missed
88 KAIWISETHAM Phetcha		

Goalkeepers Saves / Shots

0/7	0/3	0/5
2/7		1/5
4/19	0/1	0/5
12 BUABAN Thanawadee		
0/2		0/1
		0/1
3/10		0/3
24 SUPAKORN Waruephat		
0/5	0/3	0/4
2/7		1/4
1/9	0/1	0/2

Team Goals / Shots

1/1	1/1	
1/3		1/4
4/7	2/3	4/8
4-Missed	2-Post	



Legend:		
%	Efficiency	+ 2 Minute + 2 Minute Suspensions
6m	6 metre Shots	7m 7 metre Shots
BC	Blue Cards	9m 9 metre Shots
FB	Fast Breaks	AS Assists
RC	Red Cards	BS Blocked Shots
TP	Time Played	BT Breakthroughs
		G/S Goals/Shots
		N/A Not Applicable
		S/S Saves/Shots
		ST Steals
		Wing Wing Shots
		YC Yellow Cards
		2Min 2 Minute Suspensions
		EG Empty Goal
		No. Uniform Number
		TO Turnover

Match Team Statistics

球队每场统计

Match 24

THA 14 - 45 KOR

(9 - 21) (5 - 24)

Referee: LIU Y / XU X (CHN)

KOR - Republic of Korea

Players		Shots								Offence		Defence		Punishment				TP	
No	Name	G/S	%	6m	Wing	9m	7m	FB	BT	EG	AS	TO	ST	BS	YC	2Min	RC		BC
2	KIM Seonhwa	3/4	75	1/1				2/3			2								26:01
6	SONG Jiyoung	2/5	40		1/3			1/2			1					1			22:08
7	SHIN Eunjoo	10/14	71	1/2	6/8			3/4					1						40:46
10	KIM Minseo	4/6	67				1/1	2/3	1/2		1		1						13:10
11	RYU Eun Hee	4/5	80	1/1		1/2	1/1	1/1			2	1							27:35
12	JEONG Jinhui																		19:49
16	PARK Saeyoung										2	1							17:21
17	JO Suyeon										5		5						21:16
19	KANG Eunhye															1			32:57
21	SONG Hyesoo	2/3	67	1/1				0/1	1/1				1						27:35
23	LEE Migyeong	6/6	100			1/1	1/1	4/4											31:05
24	KANG Kyungmin	2/3	67	1/2					1/1		2								21:03
26	KANG Eunseo	2/2	100	1/1					1/1		1		1						35:45
29	YUN Yejin	6/6	100		4/4			2/2											19:08
31	GIM Boeun	4/5	80	1/2				3/3								1			35:24
88	PARK Joeun											1							19:00
	Bench/Team															1			
Total		45/59	76	7/10	11/15	2/3	3/3	18/23	4/5		16	3	9		1	3			

Goalkeepers		Total Shots		6m Shots		Wing Shots		9m Shots		7m Shots		Fast Breaks		Breakthroughs		Empty Goal	
No	Name	S/S	%	S/S	%	S/S	%	S/S	%	S/S	%	S/S	%	S/S	%	S/S	%
12	JEONG Jinhui	3/9	33	0/3				2/3	67	0/1				1/2	50		
16	PARK Saeyoung	4/8	50					3/3	100	1/4	25			0/1			
88	PARK Joeun	5/9	56	1/2	50	1/2	50	1/1	100			0/1		2/3	67		
Total		12/26	46	1/5	20	1/2	50	6/7	86	1/5	20	0/1		3/6	50		

Teams Shots	Goals	Saves	Missed	Post	Blocked	Total	%
6m Shots	7	3				10	70
Wing Shots	11	2	1	1		15	73
9m Shots	2			1		3	67
7m Shots	3				N/A	3	100
Fast Breaks	18	1	1	3		23	78
Breakthroughs	4	1				5	80
Empty Goal							
Totals	45	7	2	5		59	76

Number of Shots: 59, Scoring Efficiency: 76%

Match Team Statistics

球队每场统计

Match 24

THA 14 - 45 KOR

(9 - 21) (5 - 24)

Referee: LIU Y / XU X (CHN)

KOR - Republic of Korea

Shots Distribution

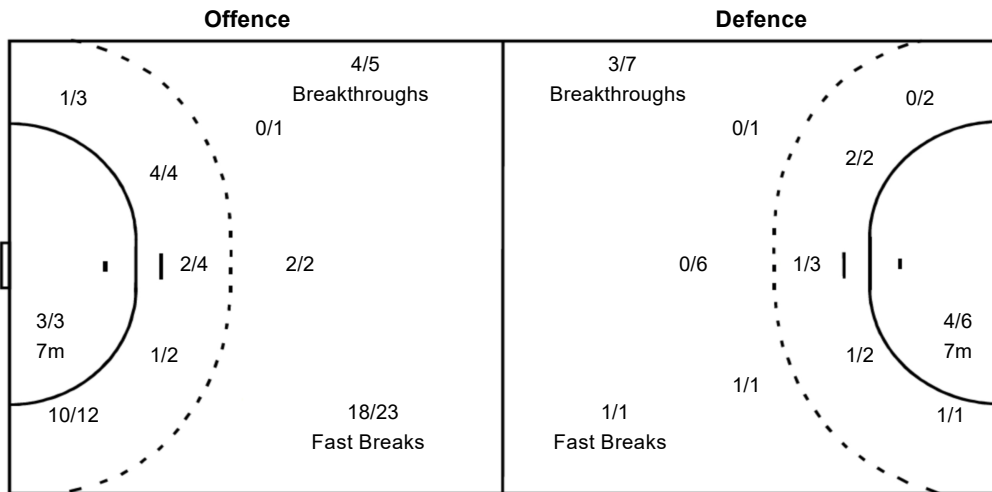
Players			Goals / Shots			
2 KIM Seonhwa	6 SONG Jiyoung	7 SHIN Eunjoo	10 KIM Minseo	11 RYU Eun Hee	12 JEONG Jinhui	16 PARK Saeyoung
1/1		2/2	1/1	1/1		
	0/1	1/2	1/1	1/1		
1/1	1/1	2/2	0/1	2/2		
1-Post	1-Post	1-Missed 2-Post	1-Missed	1-Post		
17 JO Suyeon	19 KANG Eunhye	21 SONG Hyesoo	23 LEE Migyeong	24 KANG Kyungmin	26 KANG Eunseo	29 YUN Yejin
			1/1		1/1	1/1
		1/2	4/4	2/2	1/1	2/2
		1/1	1/1	0/1	1/1	1/1
31 GIM Boeun	88 PARK Joeun					
1/1	1/1					
2/3						

Goalkeepers Saves / Shots

0/1	0/1	
2/3		3/4
3/7	1/3	4/8

Team Goals / Shots

7/7	3/3	5/5
5/7		4/5
15/19	1/1	5/5
2-Missed	5-Post	



12 JEONG Jinhui	0/1	0/1	
			1/2
	1/2		1/3

16 PARK Saeyoung	1/2		1/1
	1/2		1/3

88 PARK Joeun			
	1/1		1/1
	1/3	1/3	2/2

Legend:			
%	Efficiency	+	2 Minute + 2 Minute Suspensions
6m	6 metre Shots	7m	7 metre Shots
BC	Blue Cards	9m	9 metre Shots
FB	Fast Breaks	AS	Assists
RC	Red Cards	EG	Empty Goal
TP	Time Played	No.	Uniform Number
		TO	Turnover
		2Min	2 Minute Suspensions
		BS	Blocked Shots
		BT	Breakthroughs
		G/S	Goals/Shots
		N/A	Not Applicable
		S/S	Saves/Shots
		ST	Steals
		Wing	Wing Shots
		YC	Yellow Cards