

Match Team Statistics

球队每场统计

Match 39

CHN 25 - 26 JPN

(11 - 8) (14 - 18)

Referee: ALMAWT H / MARHOON SM (BRN)

CHN - China

Players		Shots								Offence		Defence		Punishment				TP		
No	Name	G/S	%	6m	Wing	9m	7m	FB	BT	EG	AS	TO	ST	BS	YC	2Min	RC		BC	
1	LU Chang																			39:49
3	ZHANG Haixia	2/4	50		2/3	0/1							1	1						58:58
9	LIN Yanqun																			02:34
10	TIAN Xiuxiu	3/5	60	1/1	2/4											2				55:40
11	LIU Chan	4/6	67	1/1		3/5						4								43:54
12	LI Xiaoqing	6/11	55	2/2		2/5	1/2		1/1		1									53:41
14	ZHOU Mengxue	0/1				0/1						1								07:21
17	HU Yunuo																			
21	ZHANG Guisi																			
22	YANG Yurou																			15:14
23	ZHUANG Hongyan																			
26	XIN Yan	4/4	100	3/3					1/1											43:24
27	GONG Lei	2/2	100	2/2												1				41:56
28	LIU Xuedan																			
34	JIN Mengqing	4/10	40			1/5	1/3		2/2		4	7	1			1				45:20
53	LIU Yuting																			02:58
	Bench/Team																			
Total		25/43	58	9/9	4/7	6/17	2/5		4/4		5	13	2			4				

Goalkeepers		Total Shots		6m Shots		Wing Shots		9m Shots		7m Shots		Fast Breaks		Breakthroughs		Empty Goal	
No	Name	S/S	%	S/S	%	S/S	%	S/S	%	S/S	%	S/S	%	S/S	%	S/S	%
1	LU Chang	8/22	36	1/3	33	1/1	100	4/8	50	1/4	25	0/4		1/1	100	0/1	
17	HU Yunuo																
22	YANG Yurou	3/14	21	0/5		1/2	50	2/2	100	0/3		0/1		0/1			
Total		11/36	31	1/8	13	2/3	67	6/10	60	1/7	14	0/5		1/2	50	0/1	

Teams Shots	Goals	Saves	Missed	Post	Blocked	Total	%
6m Shots	9					9	100
Wing Shots	4	3				7	57
9m Shots	6	3	2	4	2	17	35
7m Shots	2	2		1	N/A	5	40
Fast Breaks							
Breakthroughs	4					4	100
Empty Goal							
Totals	25	8	2	5	2	42	60

Number of Shots: 42, Scoring Efficiency: 60%

Match Team Statistics

球队每场统计

Match 39

CHN 25 - 26 JPN

(11 - 8) (14 - 18)

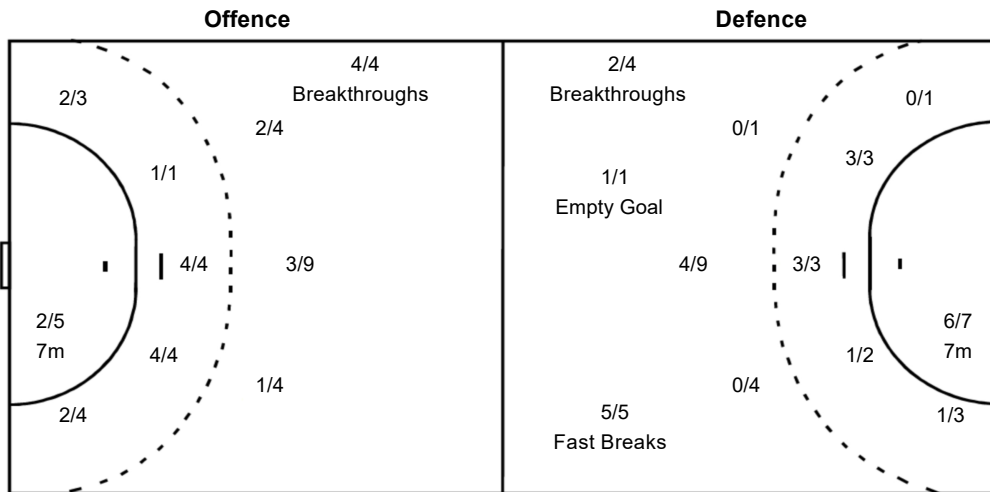
Referee: ALMAWT H / MARHOON SM (BRN)

CHN - China

Shots Distribution

Players			Goals / Shots			
1 LU Chang	3 ZHANG Haixia	9 LIN Yanqun	10 TIAN Xiuxiu	11 LIU Chan	12 LI Xiaoqing	14 ZHOU Mengxue
	1/2		2/2	1/1		
		1/1	1/1	0/1	2/3	
			0/1	1/1	1/1	2/3
	1-Missed			1-Post	1-Missed 2-Post	1-Blocked
17 HU Yunuo	21 ZHANG Guisi	22 YANG Yurou	23 ZHUANG Hongyan	26 XIN Yan	27 GONG Lei	28 LIU Xuedan
				1/1		1/1
				3/3		
34 JIN Mengqing	53 LIU Yuting					
0/1						
1/1	1/1	2/2				
	2-Post	1-Blocked				

Team Goals / Shots		
3/4		3/5
3/4	0/1	3/4
5/6	3/3	5/7
	2-Missed	5-Post 2-Blocked



Goalkeepers Saves / Shots

1/3	1/1	1/2
2/8		2/3
2/9	0/3	2/7

1 LU Chang		
1/2		1/2
1/4		1/2
2/6	0/2	2/4

17 HU Yunuo		

22 YANG Yurou		
0/1	1/1	
1/4		1/1
0/3	0/1	0/3

Legend:					
%	Efficiency	+	2 Minute + 2 Minute Suspensions	2Min	2 Minute Suspensions
6m	6 metre Shots	7m	7 metre Shots	AS	Assists
BC	Blue Cards	BS	Blocked Shots	EG	Empty Goal
FB	Fast Breaks	G/S	Goals/Shots	No.	Uniform Number
RC	Red Cards	S/S	Saves/Shots	ST	Steals
TP	Time Played	Wing	Wing Shots	YC	Yellow Cards
				N/A	Not Applicable

Match Team Statistics

球队每场统计

Match 39

CHN 25 - 26 JPN

(11 - 8) (14 - 18)

Referee: ALMAWT H / MARHOON SM (BRN)

JPN - Japan

Players		Shots									Offence		Defence		Punishment				TP	
No	Name	G/S	%	6m	Wing	9m	7m	FB	BT	EG	AS	TO	ST	BS	YC	2Min	RC	BC		
3	SAHARA Naoko	1/1	100							1/1		2		1						31:07
4	HATSUMI Miyako																			00:02
6	KITAHARA Yumi	0/2				0/2						2		1						45:46
7	HATTORI Saki	3/5	60		1/3		2/2					1								46:00
9	KASAI Chikako	8/8	100	4/4				3/3	1/1			1								60:00
12	BABA Atsuko																			38:35
13	NAKAYAMA Kaho	3/10	30	1/2		2/8					1	1				1				37:54
17	OHMATSUZAWA Ayaka																			
18	MATSUMOTO Hikaru																			05:08
22	SAITO Naho											1								18:45
23	AIZAWA Natsuki	6/11	55			1/3	4/5	1/1	0/2		1	1								60:00
24	OKADA Ayame	4/5	80	2/2		1/1			1/1			1								15:09
36	DAN Reina	0/1			0/1															08:25
43	OZAKI Kana																			
51	YOSHIDOME Yuki	1/1	100					1/1												34:40
89	ISHIKAWA Sora											1								14:12
	Bench/Team																			
Total		26/44	59	7/8	1/4	4/14	6/7	5/5	2/4	1/1	2	11		2		1				

Goalkeepers		Total Shots		6m Shots		Wing Shots		9m Shots		7m Shots		Fast Breaks		Breakthroughs		Empty Goal	
No	Name	S/S	%	S/S	%	S/S	%	S/S	%	S/S	%	S/S	%	S/S	%	S/S	%
12	BABA Atsuko	4/17	24	0/4		2/5	40	2/6	33					0/2			
22	SAITO Naho	4/16	25	0/5		1/2	50	1/3	33	2/4	50			0/2			
Total		8/35	23	0/9		3/7	43	3/11	27	2/4	50			0/4			

Teams Shots	Goals	Saves	Missed	Post	Blocked	Total	%
6m Shots	7	1				8	88
Wing Shots	1	2		1		4	25
9m Shots	4	6		4		14	29
7m Shots	6	1			N/A	7	86
Fast Breaks	5					5	100
Breakthroughs	2	1	1			4	50
Empty Goal	1					1	100
Totals	26	11	1	5		43	60

Number of Shots: 43, Scoring Efficiency: 60%

Match Team Statistics

球队每场统计

Match 39

CHN 25 - 26 JPN

(11 - 8) (14 - 18)

Referee: ALMAWT H / MARHOON SM (BRN)

JPN - Japan

Shots Distribution

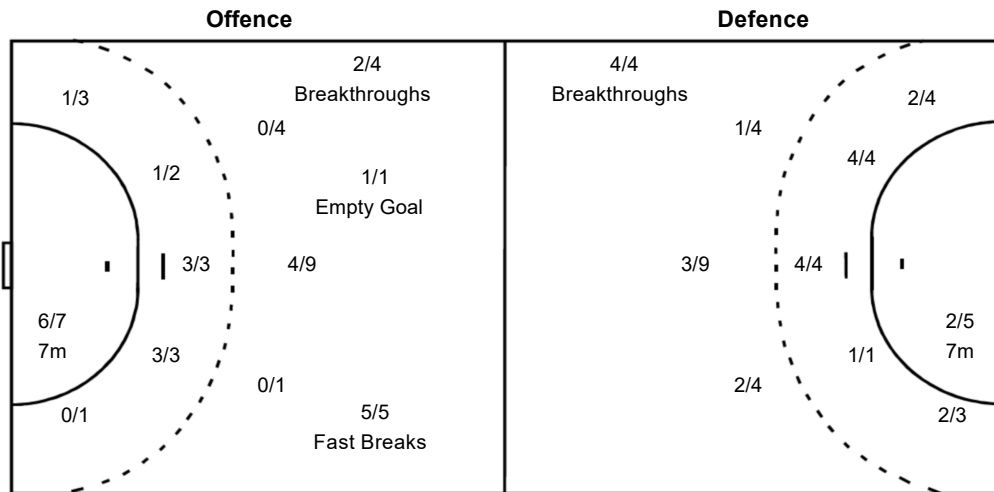
Players			Goals / Shots			
3 SAHARA Naoko	4 HATSUMI Miyako	6 KITAHARA Yumi	7 HATTORI Saki	9 KASAI Chikako	12 BABA Atsuko	13 NAKAYAMA Kaho
		0/1	1/1	1/1		0/1
			0/1	1/1		1/2
			1/1	5/5		1/2
		1-Post		1/1		1/3
17 OHMATSUZAWA Ayaka	18 MATSUMOTO Hikaru	22 SAITO Naho	23 AIZAWA Natsuki	24 OKADA Ayame	36 DAN Reina	43 OZAKI Kana
			1/1			
			1/1	2/2		
			1/3	1/1		
			1-Post	1/1	1-Post	
51 YOSHIDOME Yuki	89 ISHIKAWA Sora					
1/1						

Goalkeepers Saves / Shots

1/4		2/5
1/4	1/1	1/4
1/6	0/3	2/7

Team Goals / Shots

2/3	0/1	1/2
6/8		1/3
8/10	3/3	5/7
1-Missed	5-Post	



12 BABA Atsuko		
0/2		0/3
1/2	1/1	1/2
1/2	0/2	1/4

22 SAITO Naho		
1/2		2/2
0/2		0/2
0/4	0/1	1/3

Legend:		
%	Efficiency	+ 2 Minute + 2 Minute Suspensions
6m	6 metre Shots	7m 7 metre Shots
BC	Blue Cards	9m 9 metre Shots
FB	Fast Breaks	BS Blocked Shots
RC	Red Cards	BT Breakthroughs
TP	Time Played	G/S Goals/Shots
		N/A Not Applicable
		S/S Saves/Shots
		ST Steals
		Wing Wing Shots
		YC Yellow Cards
		2Min 2 Minute Suspensions
		AS Assists
		EG Empty Goal
		No. Uniform Number
		TO Turnover