

Match Team Statistics

球队每场统计

Match 6

HKG 10 - 38 JPN

(5 - 18) (5 - 20)

Referee: LEE E / LEE G (KOR)

HKG - Hong Kong, China

Players		Shots									Offence		Defence		Punishment				TP
No	Name	G/S	%	6m	Wing	9m	7m	FB	BT	EG	AS	TO	ST	BS	YC	2Min	RC	BC	
1	CHAN Kam Ling	0/1								0/1									47:03
8	IP Wai Ming	0/2		0/1	0/1							2							29:23
9	TANG Man Ting	1/3	33			1/3						5				1			25:18
10	CHONG Sze Ki																		
11	CHEUNG Man Shan	1/4	25	1/3						0/1									37:44
12	HUNG Cheuk Kiu																		12:56
13	WONG Chi Ching	1/6	17			1/6					3	9							41:03
15	TO Ka Man	0/1			0/1							1							36:17
17	FUNG Sze Ming	0/1				0/1						3				1			08:22
18	WU Lei Ling	1/3	33			1/2	0/1					3	1						30:58
22	WONG Wing Tung	0/1				0/1						2							21:01
27	LEE Man Nga	3/3	100	3/3								2							33:29
33	LO Kei Laam	0/1				0/1					1	4							20:06
71	WONG Yee Ting											1	1						24:50
73	CHEUNG Mei Ngo	2/4	50	0/2			2/2					3							20:17
82	YIU Hei Yan	1/1	100		1/1														30:00
	Bench/Team																		
Total		10/31	32	4/9	1/3	3/14	2/3			0/2	4	35	2			2			

Goalkeepers		Total Shots		6m Shots		Wing Shots		9m Shots		7m Shots		Fast Breaks		Breakthroughs		Empty Goal	
No	Name	S/S	%	S/S	%	S/S	%	S/S	%	S/S	%	S/S	%	S/S	%	S/S	%
1	CHAN Kam Ling	8/34	24	0/3		2/9	22	3/7	43	0/2		1/8	13	2/5	40		
12	HUNG Cheuk Kiu	1/13	8	0/1		1/6	17					0/6					
Total		9/47	19	0/4		3/15	20	3/7	43	0/2		1/14	7	2/5	40		

Teams Shots	Goals	Saves	Missed	Post	Blocked	Total	%
6m Shots	4	4		1		9	44
Wing Shots	1	1		1		3	33
9m Shots	3	5	3	2	1	14	21
7m Shots	2	1			N/A	3	67
Fast Breaks							
Breakthroughs							
Empty Goal		2				2	0
Totals	10	13	3	4	1	31	32

Number of Shots: 31, Scoring Efficiency: 32%

Match Team Statistics

球队每场统计

Match 6

HKG 10 - 38 JPN

(5 - 18) (5 - 20)

Referee: LEE E / LEE G (KOR)

HKG - Hong Kong, China

Shots Distribution

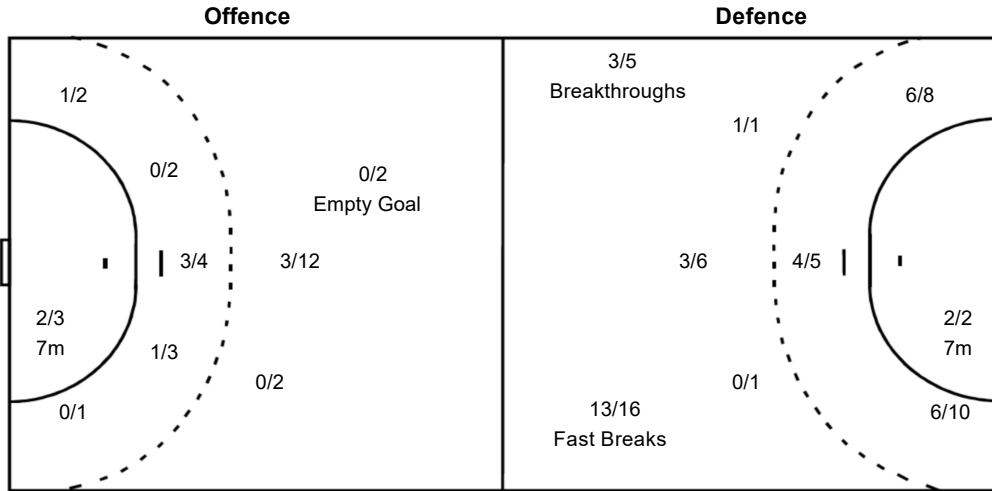
Players		
Goals / Shots		
1 CHAN Kam Ling	8 IP Wai Ming	9 TANG Man Ting
0/1	0/1	1/1
	1-Post	2-Missed
10 CHONG Sze Ki	11 CHEUNG Man Shan	12 HUNG Cheuk Kiu
	0/1	0/3
	0/1	0/1
13 WONG Chi Ching		1-Missed
15 TO Ka Man	17 FUNG Sze Ming	18 WU Lei Ling
0/1		0/1
	1-Blocked	1/1
		0/1
22 WONG Wing Tung	27 LEE Man Nga	33 LO Kei Laam
	1/1	
1-Post	1/1	1-Post
71 WONG Yee Ting		
73 CHEUNG Mei Ngo	82 YIU Hei Yan	
1/1		
1/1	0/1	
1-Post		1/1

Goalkeepers
Saves / Shots

1/5	0/4	1/8
0/5		3/6
0/5	2/2	2/12

Team
Goals / Shots

2/2	0/1	0/4
2/3	0/2	1/3
1/1	1/2	3/5
3-Missed	4-Post	1-Blocked



1 CHAN Kam Ling

1/3	0/2	1/6
0/4		3/6
0/4	1/1	2/8

12 HUNG Cheuk Kiu

0/2	0/2	0/2
0/1		
0/1	1/1	0/4

Legend:					
%	Efficiency	+	2 Minute + 2 Minute Suspensions	2Min	2 Minute Suspensions
6m	6 metre Shots	7m	7 metre Shots	AS	Assists
BC	Blue Cards	BS	Blocked Shots	EG	Empty Goal
FB	Fast Breaks	G/S	Goals/Shots	No.	Uniform Number
RC	Red Cards	S/S	Saves/Shots	ST	Steals
TP	Time Played	Wing	Wing Shots	YC	Yellow Cards

Match Team Statistics

球队每场统计

Match 6

HKG 10 - 38 JPN

(5 - 18) (5 - 20)

Referee: LEE E / LEE G (KOR)

JPN - Japan

Players		Shots									Offence		Defence		Punishment			TP	
No	Name	G/S	%	6m	Wing	9m	7m	FB	BT	EG	AS	TO	ST	BS	YC	2Min	RC		BC
3	SAHARA Naoko										2					1			46:08
4	HATSUMI Miyako	2/2	100	2/2									1						17:59
6	KITAHARA Yumi	4/6	67			3/4			1/1			1				1			37:42
7	HATTORI Saki	8/9	89		3/4		1/1	4/4			1								19:01
9	KASAI Chikako	1/3	33	0/1				1/2				1	1						18:41
12	BABA Atsuko																		12:35
13	NAKAYAMA Kaho																		04:25
17	OHMATSUZAWA Ayaka											1	2	1					22:54
18	MATSUMOTO Hikaru	3/3	100		3/3											1			28:50
22	SAITO Naho										1								47:21
23	AIZAWA Natsuki	1/1	100			1/1						3							15:08
24	OKADA Ayame	4/5	80		1/1	0/1	1/1	1/1	1/1			1							35:48
36	DAN Reina	6/8	75		2/3			4/5											21:12
43	OZAKI Kana	6/9	67		3/6			3/3				2	1						41:11
51	YOSHIDOME Yuki	0/2			0/1			0/1				1	2						17:11
89	ISHIKAWA Sora	3/7	43	2/2		0/2			1/3			1				1			25:01
	Bench/Team																		
Total		38/55	69	4/5	12/18	4/8	2/2	13/16	3/5		4	11	7	1		4			

Goalkeepers		Total Shots		6m Shots		Wing Shots		9m Shots		7m Shots		Fast Breaks		Breakthroughs		Empty Goal	
No	Name	S/S	%	S/S	%	S/S	%	S/S	%	S/S	%	S/S	%	S/S	%	S/S	%
12	BABA Atsuko	1/5	20	0/2				1/3	33								
22	SAITO Naho	12/18	67	4/6	67	1/2	50	4/5	80	1/3	33					2/2	100
Total		13/24	54	4/8	50	1/2	50	5/9	56	1/3	33					2/2	100

Teams Shots	Goals	Saves	Missed	Post	Blocked	Total	%
6m Shots	4			1		5	80
Wing Shots	12	3	2	1		18	67
9m Shots	4	3	1			8	50
7m Shots	2				N/A	2	100
Fast Breaks	13	1		2		16	81
Breakthroughs	3	2				5	60
Empty Goal							
Totals	38	9	3	4		54	70

Number of Shots: 54, Scoring Efficiency: 70%

Match Team Statistics

球队每场统计

Match 6

HKG 10 - 38 JPN

(5 - 18) (5 - 20)

Referee: LEE E / LEE G (KOR)

JPN - Japan

Shots Distribution

Players			
Goals / Shots			
3 SAHARA Naoko	4 HATSUMI Miyako	6 KITAHARA Yumi	7 HATTORI Saki
	1/1	2/2	2/2 2/2 2/2
		1/1	
	1/1	0/1	0/1 2/2
			1-Post
9 KASAI Chikako	12 BABA Atsuko	13 NAKAYAMA Kaho	
17 OHMATSUZAWA Ayaka	18 MATSUMOTO Hikaru	22 SAITO Naho	23 AIZAWA Natsuki
	1/1 1/1		
	1/1		1/1
			1-Missed
24 OKADA Ayame	36 DAN Reina	43 OZAKI Kana	
		1/1 2/2	
			1-Missed 1-Post
51 YOSHIDOME Yuki	89 ISHIKAWA Sora		
	0/1 0/1		
	1/1 0/1		
	1/1 1/2		
			1-Post

Goalkeepers Saves / Shots

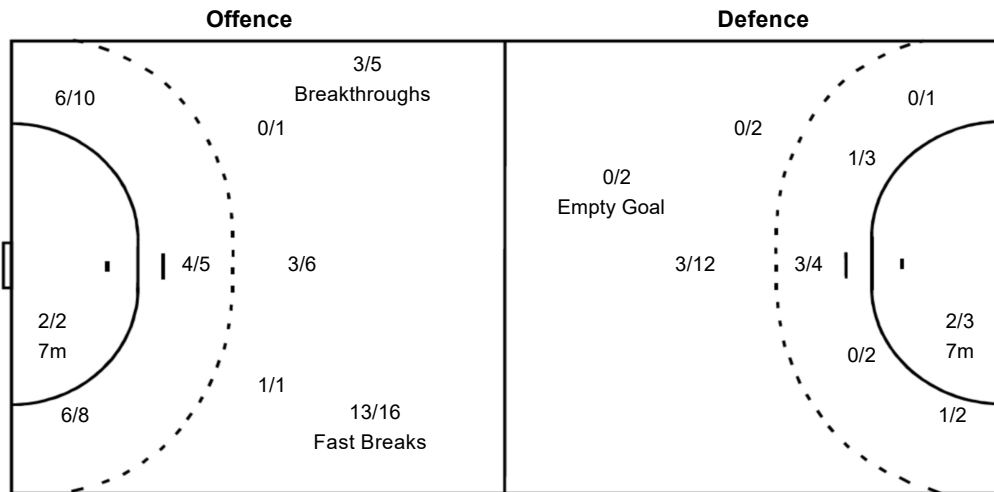
0/2	1/1	4/4
1/3	2/2	2/3
0/1	1/2	2/5

12 BABA Atsuko		
		1/1
		0/1
0/1		0/2

22 SAITO Naho		
0/2	1/1	3/3
1/3	2/2	2/2
	1/2	2/3

Team Goals / Shots

4/5	4/4	7/8
5/5		3/6
5/5	0/2	10/12
3-Missed	4-Post	



Legend:					
%	Efficiency	+	2 Minute + 2 Minute Suspensions	2Min	2 Minute Suspensions
6m	6 metre Shots	7m	7 metre Shots	AS	Assists
BC	Blue Cards	BS	Blocked Shots	EG	Empty Goal
FB	Fast Breaks	G/S	Goals/Shots	No.	Uniform Number
RC	Red Cards	S/S	Saves/Shots	ST	Steals
TP	Time Played	Wing	Wing Shots	YC	Yellow Cards
				N/A	Not Applicable
				TO	Turnover