



“中国体育彩票”2023年全国女子手球锦标赛

常州工学院体育馆

Preliminary



FTR
Match NO.11

广东 43.0 - 25.5 重庆
(24.0-18.0)(19.0-7.5)

2023-10-16 16:00
常州工学院体育馆

Referees: 伍豪(CHN) / 徐依婷(CHN)

广东

Players		Goals/shots										Attack				Defense			Penalties			TP		
#	Surname and name	Tot.	%	9m	6m	Wing	7m	Fst.	Brk.	FT	LD	As.	PC	E7	OE	St.	C7	Blk	W	2m	D		Dr	
5	赵晔	3/5	60	1/3	1/1			1/1						1			1							30:53
6	张雨乐	4/7	57.14			4/7											1							47:59
7	顾天澍	1/1	100					1/1				1			1									12:48
8	唐悦	9/11	81.82	1/2	1/2	2/2		4/4	1/1			1	1			2								47:12
9	韦娜娜	4/8	50	0/3	2/3		1/1	1/1				2				1					2			32:10
10	董雪	1/1	100		1/1									1								1		20:03
11	周亚茹	0/1	0	0/1								1	1	3	2		1							37:48
12	李晓晴	3/4	75	1/1			1/1	1/1	0/1							2								28:00
13	杨慧	3/5	60	0/1	1/2			1/1	1/1			2			2									34:07
15	王慧																							08:25
16	冯颖慧																							15:30
17	崔云莉	7/9	77.78	3/4				4/5				2			1						1			35:11
22	范春燕											1			1									37:21
23	覃元沿	0/1	0			0/1																		03:29
26	杨丽丽																							07:08
29	曲菁熠	1/1	100			1/1																		11:46
	合计	36/54	66.67	6/15	6/9	7/11	2/2	13/14	2/3			10	1	3	8	7	2	1			4			06:49:50

Goalkeepers		Saves / shots										TP
#	Surname and name	Tot.	%	9m	6m	Wing	7m	Fst.	Brk.	FT	LD	
16	冯颖慧	2/12	16.67	1/1	1/3	0/3	0/1	0/2	0/2			15:30
22	范春燕	11/22	50	2/3	5/8	2/6	1/1	0/2	1/2			37:21
26	杨丽丽	3/5	60	3/3	0/2							07:08
	合计	16/39	41.03	6/7	6/13	2/9	1/2	0/4	1/4			00:59:59

Jersey number Tot. Total shooting 6m 6m shooting 9m 9m shooting Wing Wing shooting Fst Fastbreak 7m 7m Throw
 Brk. Breakthrough LD Long distance shooting As. Assists E7 Earned 7m St. Steals 2m 2-minute suspension C7. Received 7m
 D Disqualification Dr Disqualification+Report FT Free Throw PC Pass clear chance OE Offensiven Errors TP Time played W warning
 Blk. Block



“中国体育彩票”2023年全国女子手球锦标赛

常州工学院体育馆

Preliminary



Match Team Statistics
Match NO.11

广东 43.0 - 25.5 重庆
(24.0-18.0)(19.0-7.5)

2023-10-16 16:00
常州工学院体育馆

Referees: 伍豪(CHN) / 徐依婷(CHN)

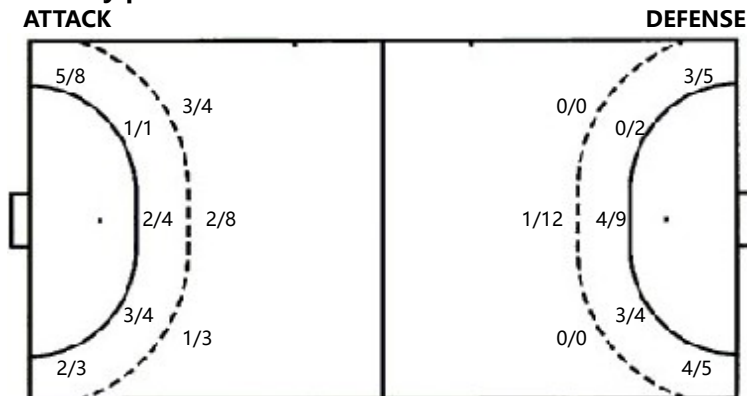
Shot distribution by player

5.赵晔 1post 12.李晓晴	6.张雨乐 13.杨慧	7.顾天澍 15.王慧	8.唐悦 1post 1miss 16.冯颖慧	9.韦娜娜 1post 2miss 17.崔云莉	10.董雪 22.范春燕	11.周亚茹 1post 23.覃元沿
1/1 1/1 0/1	2/2 0/1 0/1 2/3	1/1	2/2 1/1 1/1 2/2 2/2 1/1	1/1 1/1 0/1 1/1	1/1	
1/1 1/1 0/1 1/1	0/1 3/3			3/3 1/1 2/2 1/1		0/1
26.杨丽丽	29.曲菁熠	.合计		2post		
	1/1	8/8 5/5 5/6 2/3 0/1 1/2 4/5 2/4 9/10				
		6post 3miss 1block				

Saves distribution goalkeepers

16.冯颖慧	22.范春燕	26.杨丽丽	.合计
0/1 0/1 1/5	4/6 1/1 0/1 0/3 2/2 3/5	1/1 1/1 1/2 0/1	5/7 2/3 1/3 0/4 2/2 0/1 4/10 0/1 2/8

Shots by position



Shooting statistics

Position	Goals	Save	Miss	Post	Blk	Total	%
9m	6	2	2	4	1	15	40
6m	6	1	1	1		9	67
边射	7	4				11	64
7m	2					2	100
快攻	13			1		14	93
突破	2	1				3	67
任意球							
超远射							
合计	36	8	3	6	1	54	67

7m penalties 2/2
Fastbreak 13/14
Breakthrough 2/3
Long dist. 0/0
Free Throw 0/0

7m penalties 1/3
Fastbreak 4/4
Breakthrough 3/5
Long dist. 0/0
Free Throw 0/2

Jersey number Tot. Total shooting 6m 6m shooting 9m 9m shooting WingWing shooting Fst Fastbreak 7m 7m Throw
Brk. Breakthrough LD Long distance shooting As. Assists E7 Earned 7m St. Steals 2m 2-minute suspension C7. Received 7m
D Disqualification Dr Disqualification+Report FT Free Throw PC Pass clear chance OE Offensiven Errors TP Time played W warning



“中国体育彩票”2023年全国女子手球锦标赛

常州工学院体育馆

Preliminary



Match Team Statistics
Match NO.11

广东 43.0 - 25.5 重庆
(24.0-18.0)(19.0-7.5)

2023-10-16 16:00
常州工学院体育馆

Referees: 伍豪(CHN) / 徐依婷(CHN)

重庆

Players		Goals/shots										Attack				Defense			Penalties			TP		
#	Surname and name	Tot.	%	9m	6m	Wing	7m	Fst.	Brk.	FT	LD	As.	PC	E7	OE	St.	C7	Blk	W	2m	D		Dr	
5	张越	1/8	12.5	0/4	0/2	1/1				0/1		1			3		1							36:41
6	陈鑫雨	2/2	100					1/1	1/1					1	1		1					1		42:44
8	王梓墨	1/2	50			1/1				0/1														21:19
9	徐欣雨																							09:54
10	李文华	0/2		0/2																				14:20
11	梅欣洋	4/10	40	0/1	1/2		1/3	1/1	1/2	0/1					2		1							27:05
12	范文娜											1												57:59
14	赵方锐	1/3	33.33	0/1	1/2										2			1				1		15:25
18	陶璐得	0/1		0/1																				10:28
19	李欣颐	1/2	50	0/1	1/1										1									20:56
21	王彩琳	5/7	71.43	1/1	3/5				1/1					1	5							1		36:31
22	杨洁	2/4	50			2/4										1								47:18
23	刘馨慧	0/1		0/1											2									10:10
26	李宝怡	0/1			0/1																	2		13:43
32	戴雨彤	1/1	100		1/1																			06:59
77	张静	5/7	71.43		0/1	3/4		2/2									1							38:06
	合计	23/51	45.1	1/12	7/15	7/10	1/3	4/4	3/5	0/2		2		2	16	2	3	1				5		06:49:38

Goalkeepers		Saves / shots										TP
#	Surname and name	Tot.	%	9m	6m	Wing	7m	Fst	Brk.	FT	LD	
12	范文娜	8/43	18.6	2/8	1/7	4/11	0/2	0/12	1/3			57:59
	合计	8/43	18.6	2/8	1/7	4/11	0/2	0/12	1/3			00:57:59

Jersey number Tot. Total shooting 6m 6m shooting 9m 9m shooting Wing Wing shooting Fst Fastbreak 7m 7m Throw
 Brk. Breakthrough LD Long distance shooting As. Assists E7 Earned 7m St. Steals 2m 2-minute suspension C7. Received 7m
 D Disqualification Dr Disqualification+Report FT Free Throw PC Pass clear chance OE Offensiven Errors TP Time played W warning
 Blk. Block



“中国体育彩票”2023年全国女子手球锦标赛

常州工学院体育馆

Preliminary



FTR
Match NO.11

广东 43.0 - 25.5 重庆
(24.0-18.0)(19.0-7.5)

2023-10-16 16:00
常州工学院体育馆

Referees: 伍豪(CHN) / 徐依婷(CHN)

Shot distribution by player

5.张越 6.陈鑫雨 8.王梓墨 9.徐欣雨 10.李文华 11.梅欣洋 12.范文娜

1/1	0/1	0/1						1/1				0/1	0/1			1/1				
		0/2	1/1		1/1										1/2	1/1	1/1			

2post 1miss
14.赵方锐

18.陶璐得

19.李欣颐

21.王彩琳

22.杨洁

2post 2miss
23.刘馨慧

26.李宝怡

						1/1						0/2			0/1					
0/1		1/1										1/1								
									2/3		3/3	1/1								0/1

1miss
32.戴雨彤

77.张静

1miss
.合计

1post

		1/1	0/1			2/7	1/3	2/3
			3/3			4/4	0/2	1/1
			1/1		1/1	6/10	1/1	6/8

1post

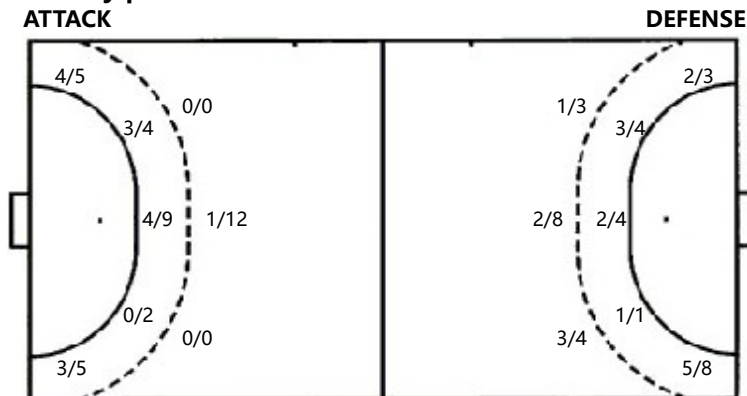
6post 5miss 1block

Saves distribution goalkeepers

12.范文娜 .合计

0/8	0/5	1/5	0/8	0/5	1/6
1/3	1/1	1/2	1/3	1/1	1/2
1/5	2/4	1/10	1/5	2/4	1/10

Shots by position



7m penalties 1/3
Fastbreak 4/4
Breakthrough 3/5
Long dist. 0/0
Free Throw 0/2

7m penalties 2/2
Fastbreak 13/14
Breakthrough 2/3
Long dist. 0/0
Free Throw 0/0

Shooting statistics

Position	Goals	Save	Miss	Post	Blk	Total	%
9m	1	6	2	2	1	12	8
6m	7	6	1	1		15	47
边射	7	2		1		10	70
7m	1	1		1		3	33
快攻	4					4	100
突破	3	1	1			5	60
任意球			1	1		2	
超远射							
合计	23	16	5	6	1	51	45

Jersey number Tot. Total shooting 6m 6m shooting 9m 9m shooting WingWing shooting Fst Fastbreak 7m 7m Throw
Brk. Breakthrough LD Long distance shooting As. Assists E7 Earned 7m St. Steals 2m 2-minute suspension C7. Received 7m
D Disqualification Dr Disqualification+Report FT Free Throw PC Pass clear chance OE Offensiven Errors TP Time played W warning