



“中国体育彩票”2023年全国女子手球锦标赛

常州工学院体育馆

Placement



FTR
Match NO.17

重庆 22.5 - 40.0 安徽
(11.5-18.0)(11.0-22.0)

2023-10-19 13:00
常州工学院体育馆

Referees: 王羚(CHN) / 任超凡(CHN)

重庆

Players		Goals/shots										Attack				Defense			Penalties			TP		
#	Surname and name	Tot.	%	9m	6m	Wing	7m	Fst.	Brk.	FT	LD	As.	PC	E7	OE	St.	C7	Blk	W	2m	D		Dr	
5	张越	5/6	83.33	4/5				1/1				2		2		1								55:32
6	陈鑫雨	3/3	100		3/3									1		2								32:40
8	王梓墨																							30:00
9	徐欣雨																							00:00
10	李文华																							00:00
11	梅欣洋	0/2	0	0/1						0/1				1										17:47
12	范文娜													2										59:16
14	赵方锐																							00:00
18	陶璐得	0/4	0	0/2			0/1		0/1					1	4	2		1	1					32:35
19	李欣颐	10/26	38.46	4/16			5/6		0/2	1/2				4										40:03
21	王彩琳	1/5	20	0/1	1/4							1		5		1								33:56
22	杨洁	1/2	50		1/1			0/1						2	1			1		2				52:06
23	刘馨慧																							00:00
26	李宝怡													2	1		3							32:57
32	戴雨彤																							00:00
77	张静	2/2	100		1/1	1/1											1							28:49
	合计	22/50	44	8/25	6/9	1/1	5/7	1/2	0/3	1/3		3	4	21	1	7	4	1	3					06:55:41

Goalkeepers		Saves / shots											TP
#	Surname and name	Tot.	%	9m	6m	Wing	7m	Fst.	Brk.	FT	LD		
12	范文娜	11/44	25	7/11	1/8	0/5	0/4	2/13	1/3			59:16	
	合计	11/44	25	7/11	1/8	0/5	0/4	2/13	1/3			00:59:16	

Jersey number Tot. Total shooting 6m 6m shooting 9m 9m shooting Wing Wing shooting Fst Fastbreak 7m 7m Throw
 Brk. Breakthrough LD Long distance shooting As. Assists E7 Earned 7m St. Steals 2m 2-minute suspension C7. Received 7m
 D Disqualification Dr Disqualification+Report FT Free Throw PC Pass clear chance OE Offensiven Errors TP Time played W warning
 Blk. Block



“中国体育彩票”2023年全国女子手球锦标赛

常州工学院体育馆

Placement



Match Team Statistics
Match NO.17

重庆 22.5 - 40.0 安徽
(11.5-18.0)(11.0-22.0)

2023-10-19 13:00
常州工学院体育馆

Referees: 王羚(CHN) / 任超凡(CHN)

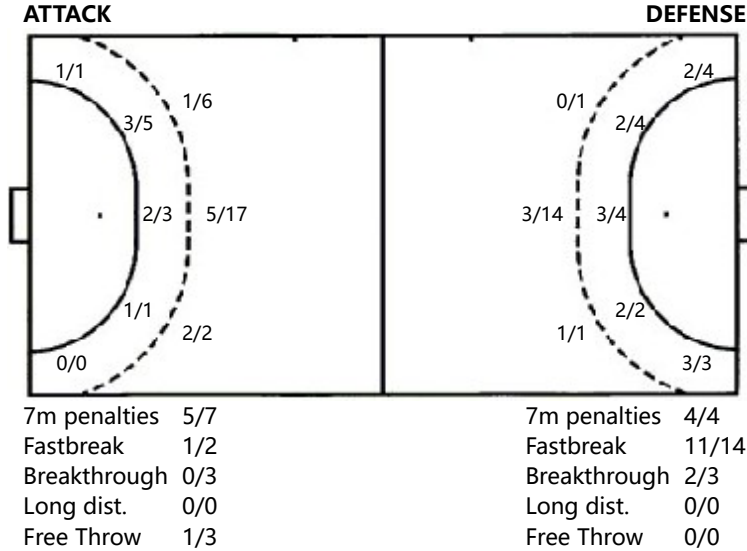
Shot distribution by player

5.张越	6.陈鑫雨	8.王梓墨	9.徐欣雨	10.李文华	11.梅欣洋	12.范文娜
3/3 1/1	1/1				0/1	
1/2	1/1 1/1					
14.赵方锐	18.陶璐得	19.李欣颐	21.王彩琳	22.杨洁	23.刘馨慧	26.李宝怡
		0/1 3/4	0/1		1miss	
	0/1 0/1	0/1 3/7 4/5	1/2 0/1 0/1	0/1	23.刘馨慧	
32.戴雨彤	1miss 1block 77.张静	3miss 5block .合计		1/1		
		3/3 1/4 4/5				
	1/1 1/1	2/5 0/1				
		6/11 6/10				
		5miss 6block				

Saves distribution goalkeepers

12.范文娜	.合计
1/6 1/3 0/4	1/6 1/3 0/4
2/3	2/3
2/10 3/3 2/15	2/10 3/3 2/15

Shots by position



Shooting statistics

Position	Goals	Save	Miss	Post	Blk	Total	%
9m	8	9	3		5	25	32
6m	6	3				9	67
边射	1					1	100
7m	5	2				7	71
快攻	1	1				2	50
突破		1	2			3	
任意球	1	1			1	3	33
超远射							
合计	22	17	5		6	50	44

Jersey number Tot. Total shooting 6m 6m shooting 9m 9m shooting WingWing shooting Fst Fastbreak 7m 7m Throw
 Brk. Breakthrough LD Long distance shooting As. Assists E7 Earned 7m St. Steals 2m 2-minute suspension C7. Received 7m
 D Disqualification Dr Disqualification+Report FT Free Throw PC Pass clear chance OE Offensiven Errors TP Time played W warning
 Blk. Block



“中国体育彩票”2023年全国女子手球锦标赛

常州工学院体育馆

Placement



Match Team Statistics
Match NO.17

重庆 22.5 - 40.0 安徽
(11.5-18.0)(11.0-22.0)

2023-10-19 13:00
常州工学院体育馆

Referees: 王羚(CHN) / 任超凡(CHN)

安徽

Players		Goals/shots										Attack				Defense			Penalties			TP		
#	Surname and name	Tot.	%	9m	6m	Wing	7m	Fst.	Brk.	FT	LD	As.	PC	E7	OE	St.	C7	Blk	W	2m	D		Dr	
1	张家轩											1												58:40
3	锁珊珊	0/1		0/1																				03:58
5	张桂思													1		1	1	1						10:29
11	赵若妍	3/7	42.86			2/4		1/3						2	3					1	2			45:56
14	刘玉婷	5/5	100			2/2		3/3							1									26:15
15	朱梦颖	6/6	100			1/1	1/1	4/4						2			1				1			13:34
18	蔡雪洁	5/10	50	1/4	2/3			1/1	1/2			1				1								43:14
20	孙明月	6/9	66.67	1/3	3/4			1/1	1/1			1			6				3					55:14
22	周梦雪	3/6	50	1/4	1/1			1/1																12:45
23	何雅莉	1/1	100						1/1						1							1		03:46
24	黄紫蝶													1	1									04:45
32	宋雨叶													1										04:39
41	杜机娟																							00:00
68	刘学丹	3/7	42.86	1/4	0/1			2/2				4			1	1		1						55:21
96	张文慧	1/2	50		1/1			0/1							2		1	1						54:15
	合计	33/54	61.11	4/16	7/10	5/7	4/4	11/14	2/3			7		7	15	2	4	6	1	3	1			06:32:51

Goalkeepers		Saves / shots										TP
#	Surname and name	Tot.	%	9m	6m	Wing	7m	Fst	Brk.	FT	LD	
1	张家轩	17/39	43.59	9/17	3/9	0/1	2/7	1/2	1/1	1/2		58:40
	合计	17/39	43.59	9/17	3/9	0/1	2/7	1/2	1/1	1/2		00:58:40

Jersey number Tot. Total shooting 6m 6m shooting 9m 9m shooting Wing Wing shooting Fst Fastbreak 7m 7m Throw
 Brk. Breakthrough LD Long distance shooting As. Assists E7 Earned 7m St. Steals 2m 2-minute suspension C7. Received 7m
 D Disqualification Dr Disqualification+Report FT Free Throw PC Pass clear chance OE Offensiven Errors TP Time played W warning
 Blk. Block



“中国体育彩票”2023年全国女子手球锦标赛

常州工学院体育馆

Placement



FTR
Match NO.17

重庆 22.5 - 40.0 安徽
(11.5-18.0)(11.0-22.0)

2023-10-19 13:00
常州工学院体育馆

Referees: 王羚(CHN) / 任超凡(CHN)

Shot distribution by player

1.张家轩

3.锁珊珊

5.张桂思

11.赵若妍

14.刘玉婷

15.朱梦颖

18.蔡雪洁

1/1		
1/1		
0/1		1/1

	2/2	
2/2		1/1

2/2		1/1
2/2		1/1

1/1		1/1
	0/2	3/3

20.孙明月

22.周梦雪

23.何雅莉

24.黄紫蝶

32.宋雨叶

41.杜机娟

68.刘学丹

2/2	0/1	4/5

		1/1
0/1		
2/2		0/1

		1/1

1/2		1/1
0/1		
0/1		1/1

96.张文慧

.合计

1miss

	0/1	
		1/1

5/6	2/3	4/4
1/3		
8/10	0/3	13/15

6miss 4block

Saves distribution goalkeepers

1.张家轩

.合计

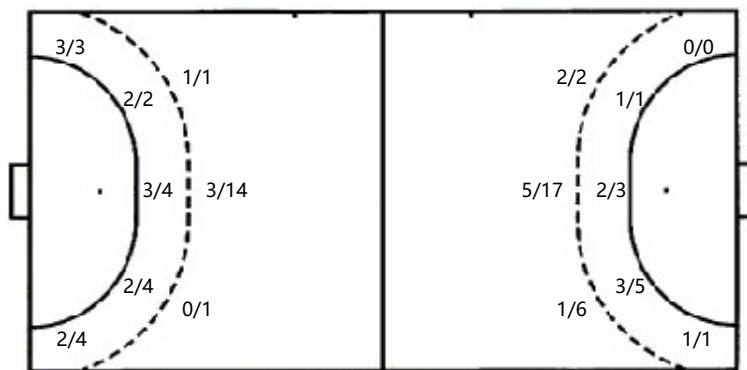
0/3	3/4	1/5
3/5	1/1	
5/11		4/10

0/3	3/4	1/5
3/5	1/1	
5/11		4/10

Shots by position

ATTACK

DEFENSE



7m penalties 4/4

Fastbreak 11/14

Breakthrough 2/3

Long dist. 0/0

Free Throw 0/0

7m penalties 5/7

Fastbreak 1/2

Breakthrough 0/3

Long dist. 0/0

Free Throw 1/3

Shooting statistics

Position	Goals	Save	Miss	Post	Blk	Total	%
9m	4	7	2		3	16	25
6m	7	1	1		1	10	70
边射	5		2			7	71
7m	4					4	100
快攻	11	2	1			14	79
突破	2	1				3	67
任意球							
超远射							
合计	33	11	6		4	54	61

Jersey number Tot. Total shooting 6m 6m shooting 9m 9m shooting WingWing shooting Fst Fastbreak 7m 7m Throw
 Brk. Breakthrough LD Long distance shooting As. Assists E7 Earned 7m St. Steals 2m 2-minute suspension C7. Received 7m
 D Disqualification Dr Disqualification+Report FT Free Throw PC Pass clear chance OE Offensiven Errors TP Time played W warning
 Blk. Block