



“中国体育彩票”2023年全国女子手球锦标赛

常州工学院体育馆

Place 7-8



FTR
Match NO.21

重庆 37.0 - 23.0 北京
(16.5-9.5)(20.5-13.5)

2023-10-20 09:30
常州工学院体育馆

Referees: 陈常增(CHN) / 任超凡(CHN)

重庆

Players		Goals/shots										Attack			Defense			Penalties			TP			
#	Surname and name	Tot.	%	9m	6m	Wing	7m	Fst.	Brk.	FT	LD	As.	PC	E7	OE	St.	C7	Blk	W	2m		D	Dr	
5	张越	6/9	66.67	3/5	1/2			1/1	1/1			1		1	1	1								50:15
6	陈鑫雨																							08:20
8	王梓墨	3/3	100		1/1	1/1		1/1								1	1							00:00
9	徐欣雨																							00:00
10	李文华	1/1	100		1/1										1	1								00:00
11	梅欣洋	6/9	66.67	1/3	2/2		2/3		1/1								1							11:59
12	范文娜																							60:00
14	赵方锐																							00:00
18	陶璐得														2		2							15:44
19	李欣颐	11/21	52.38	6/13	1/1		2/4	1/1		1/2					1									37:55
21	王彩琳	3/7	42.86		0/1			0/1	3/5						3	1	1							37:43
22	杨洁	1/2	50			1/2										1		1						30:00
23	刘馨慧																							00:00
26	李宝怡	2/3	66.67		2/2				0/1						1		1	6						40:34
32	戴雨彤																							00:00
77	张静	2/2	100			2/2											1							30:00
	合计	35/57	61.4	10/21	8/10	4/5	4/7	3/4	5/8	1/2		1		1	9	5	7	7						05:22:30

Goalkeepers		Saves / shots											TP
#	Surname and name	Tot.	%	9m	6m	Wing	7m	Fst.	Brk.	FT	LD		
12	范文娜	16/37	43.24	7/8	3/7	3/9	0/1	1/5	1/5	1/2		60:00	
	合计	16/37	43.24	7/8	3/7	3/9	0/1	1/5	1/5	1/2		01:00:00	

Jersey number Tot. Total shooting 6m 6m shooting 9m 9m shooting Wing Wing shooting Fst Fastbreak 7m 7m Throw
 Brk. Breakthrough LD Long distance shooting As. Assists E7 Earned 7m St. Steals 2m 2-minute suspension C7. Received 7m
 D Disqualification Dr Disqualification+Report FT Free Throw PC Pass clear chance OE Offensiven Errors TP Time played W warning
 Blk. Block



“中国体育彩票” 2023年全国女子手球锦标赛

常州工学院体育馆

Place 7-8



Match Team Statistics
Match NO.21

重庆 37.0 - 23.0 北京
(16.5-9.5)(20.5-13.5)

2023-10-20 09:30
常州工学院体育馆

Referees: 陈常增(CHN) / 任超凡(CHN)

Shot distribution by player

5.张越 6.陈鑫雨 8.王梓墨 9.徐欣雨 10.李文华 11.梅欣洋 12.范文娜

	1/1	2/2					1/1									1/1				
1/1		0/1												3/3			2/3			
		2/3					1/1	1/1						1/1						

1miss
14.赵方锐 18.陶璐得 19.李欣颐 21.王彩琳 22.杨洁 23.刘馨慧 26.李宝怡

						3/5	1/1	1/2	1/1											
						0/2	0/2	3/3		0/1	1/1									
						1/1		2/2	1/2	0/1	0/1	1/1						1/1		1/1

32.戴雨彤 77.张静 .合计 1post 1miss 1block .合计 1post

				1/1		4/6	5/5	3/4
						1/3	0/3	7/8
			1/1			5/6	1/2	9/12

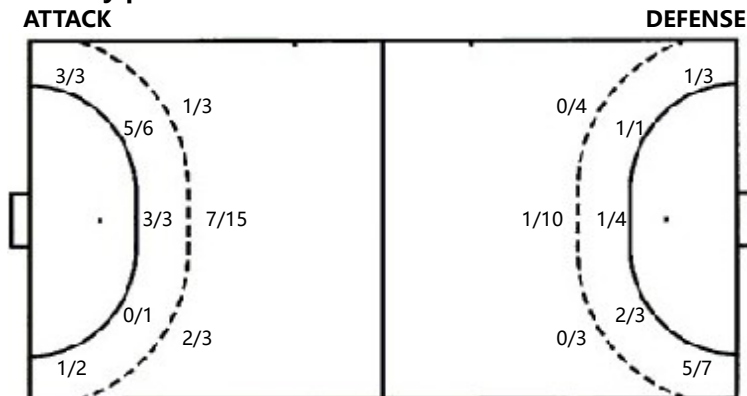
4post 3miss 1block

Saves distribution goalkeepers

12.范文娜 .合计

3/6	2/2	0/1	3/6	2/2	0/1
2/3	2/2	4/7	2/3	2/2	4/7
2/6		1/10	2/6		1/10

Shots by position



7m penalties	4/7	7m penalties	1/1
Fastbreak	3/4	Fastbreak	4/5
Breakthrough	5/8	Breakthrough	4/5
Long dist.	0/0	Long dist.	0/0
Free Throw	1/2	Free Throw	1/4

Shooting statistics

Position	Goals	Save	Miss	Post	Blk	Total	%
9m	10	7	2	1	1	21	48
6m	8	1	1			10	80
边射	4			1		5	80
7m	4	2		1		7	57
快攻	3	1				4	75
突破	5	2		1		8	63
任意球	1	1				2	50
超远射							
合计	35	14	3	4	1	57	61

Jersey number Tot. Total shooting 6m 6m shooting 9m 9m shooting WingWing shooting Fst Fastbreak 7m 7m Throw
 Brk. Breakthrough LD Long distance shooting As. Assists E7 Earned 7m St. Steals 2m 2-minute suspension C7. Received 7m
 D Disqualification Dr Disqualification+Report FT Free Throw PC Pass clear chance OE Offensiven Errors TP Time played W warning
 Blk. Block



“中国体育彩票”2023年全国女子手球锦标赛

常州工学院体育馆

Place 7-8



Match Team Statistics
Match NO.21

重庆 37.0 - 23.0 北京
(16.5-9.5)(20.5-13.5)

2023-10-20 09:30
常州工学院体育馆

Referees: 陈常增(CHN) / 任超凡(CHN)

北京

#	Surname and name	Goals/shots										Attack				Defense			Penalties			TP		
		Tot.	%	9m	6m	Wing	7m	Fst.	Brk.	FT	LD	As.	PC	E7	OE	St.	C7	Blk	W	2m	D		Dr	
1	王海叶																							00:00
4	姬慧慧																							00:00
5	常凯璇												1											21:27
7	赵荣鑫	0/2				0/1		0/1					3	1						1				26:17
8	徐慧敏	6/7	85.71			3/4		3/3				1	1	1		1								50:03
9	尹钰琪	0/1		0/1								3	1	2						2				09:12
11	王腾爽	0/2		0/1						0/1														00:00
13	李莹	1/2	50		1/1					0/1														00:00
14	侯美林	5/12	41.67	0/3	1/2	2/3			2/3	0/1		1			5	1								50:03
17	齐峻萱	0/1		0/1											3									00:00
18	田俊	4/11	36.36	0/6	1/2		1/1	1/1		1/1		2	1		2									50:03
20	周晓雨											1	1		1									45:32
22	张子晴																							00:00
24	张嘉欣																							14:28
25	董柏凡	0/1			0/1														1					23:43
33	马洁	5/11	45.45	1/5	1/2	1/2			2/2					1	3									26:16
	合计	21/50	42	1/17	4/8	6/10	1/1	4/5	4/5	1/4		8	2	7	18	1	1	1		3				05:17:04

#	Surname and name	Saves / shots										TP												
		Tot.	%	9m	6m	Wing	7m	Fst	Brk.	FT	LD													
1	王海叶																						00:00	
20	周晓雨	12/38	31.58	7/13	1/8	0/3	1/5	1/3	1/4	1/2														45:32
24	张嘉欣	2/11	18.18	0/4	0/1	0/1	1/1	0/1	1/3															14:28
	合计	14/49	28.57	7/17	1/9	0/4	2/6	1/4	2/7	1/2														01:00:00

Jersey number Tot. Total shooting 6m 6m shooting 9m 9m shooting Wing Wing shooting Fst Fastbreak 7m 7m Throw
 Brk. Breakthrough LD Long distance shooting As. Assists E7 Earned 7m St. Steals 2m 2-minute suspension C7. Received 7m
 D Disqualification Dr Disqualification+Report FT Free Throw PC Pass clear chance OE Offensiven Errors TP Time played W warning
 Blk. Block



“中国体育彩票”2023年全国女子手球锦标赛

常州工学院体育馆

Place 7-8



FTR
Match NO.21

重庆 37.0 - 23.0 北京
(16.5-9.5)(20.5-13.5)

2023-10-20 09:30
常州工学院体育馆

Referees: 陈常增(CHN) / 任超凡(CHN)

Shot distribution by player

1.王海叶

4.姬慧慧

5.常凯旋

7.赵荣鑫

8.徐慧敏

9.尹钰琪

11.王腾爽

0/1		
0/1		

		1/1
1/1		1/2
1/1		2/2

0/1		

13.李莹

14.侯美林

17.齐峻萱

18.田俊

20.周晓雨

22.张子晴

24.张嘉欣

		1/1

	0/2	1/2
		4/5

1/2	0/1	
		0/1
2/2		1/1

25.董柏凡

33.马洁

.合计

1miss 3block

0/1		

2/3	0/1	
0/1		0/1
1/1		2/2

3/6	0/2	1/1
1/3	0/2	3/7
4/6		9/10

1miss 1block

6miss 7block

Saves distribution goalkeepers

1.王海叶

20.周晓雨

24.张嘉欣

.合计

2/4	0/4	1/4
2/2	2/2	1/8
1/4	1/2	2/8

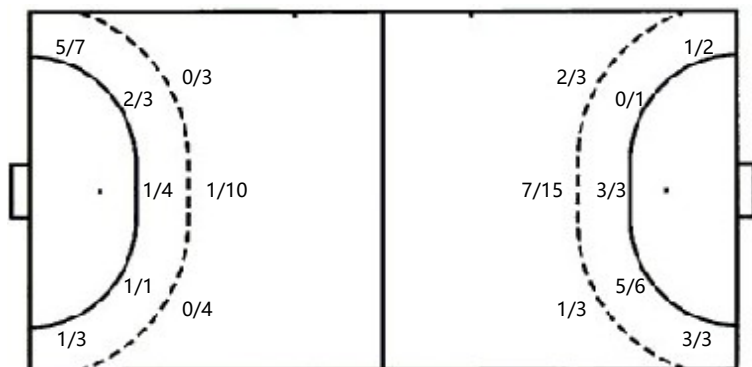
0/2	0/1	
0/1	1/1	
0/2		1/4

2/6	0/5	1/4
2/3	3/3	1/8
1/6	1/2	3/12

Shots by position

ATTACK

DEFENSE



7m penalties 1/1
Fastbreak 4/5
Breakthrough 4/5
Long dist. 0/0
Free Throw 1/4

7m penalties 4/7
Fastbreak 3/4
Breakthrough 5/8
Long dist. 0/0
Free Throw 1/2

Shooting statistics

Position	Goals	Save	Miss	Post	Blk	Total	%
9m	1	7	4		5	17	6
6m	4	3			1	8	50
边射	6	3	1			10	60
7m	1					1	100
快攻	4	1				5	80
突破	4	1				5	80
任意球	1	1	1		1	4	25
超远射							
合计	21	16	6		7	50	42

Jersey number Tot. Total shooting 6m 6m shooting 9m 9m shooting WingWing shooting Fst Fastbreak 7m 7m Throw
Brk. Breakthrough LD Long distance shooting As. Assists E7 Earned 7m St. Steals 2m 2-minute suspension C7. Received 7m
D Disqualification Dr Disqualification+Report FT Free Throw PC Pass clear chance OE Offensiven Errors TP Time played W warning