



中国手球协会  
CHINESE HANDBALL ASSOCIATION

# 2024全国女子手球冠军杯赛

四川.万州区

Semi-Final



FTR  
Match NO.24

广东 30.5 - 40.0 山东  
(14.5-17.5)(16.0-22.5)

2024-05-27 18:45  
万州区三峡之星体育馆

Referees: 严璐(CHN) / 万敏(CHN)

## 广东

Players		Goals/shots										Attack				Defense			Penalties			TP		
#	Surname and name	Tot.	%	9m	6m	Wing	7m	Fst.	Brk.	FT	LD	As.	PC	E7	OE	St.	C7	Blk	W	2m	D		Dr	
3	姜翌珊	2/3	66.67		1/2		1/1								2		1				1			39:40
5	赵晔	7/10	70	3/4	1/3		3/3					1	1	2	2		2	1			2			54:20
6	张雨乐	2/4	50		0/1	1/2		1/1																27:13
7	顾天澍	1/4	25			1/4											1							46:27
8	唐悦	9/10	90	2/2		3/3	0/1	1/1	2/2		1/1	1		1	5	1	1							60:00
9	韦娜娜	1/6	16.67	0/2	0/1	0/1	0/1		1/1					1	4									39:20
10	董雪														1									08:05
11	周亚茹	4/8	50	1/3	1/3			2/2				1			3	1	1							59:31
15	王慧																							00:00
16	冯颖慧												1											17:34
19	张晓梅																							03:46
20	李梦瑶																							00:00
22	范春燕																							30:00
23	覃元沿																							00:00
26	杨丽丽												1											12:26
36	张含笑	1/2	50		0/1			1/1																13:31
	合计	27/47	57.45	6/11	3/11	5/10	4/6	5/5	3/3		1/1	5	1	4	17	2	6	1			3			06:51:53

Goalkeepers		Saves / shots										TP
#	Surname and name	Tot.	%	9m	6m	Wing	7m	Fst.	Brk.	FT	LD	
16	冯颖慧	4/16	25	1/1		3/4	0/1	0/6	0/4			17:34
22	范春燕	4/20	20	0/2	1/5	0/2	0/1	0/3	3/7			30:00
26	杨丽丽	3/10	30	0/1	2/2	0/2	1/2	0/1	0/2			12:26
	合计	11/46	23.91	1/4	3/7	3/8	1/4	0/10	3/13			01:00:00

# Jersey number Tot. Total shooting 6m 6m shooting 9m 9m shooting Wing Wing shooting Fst Fastbreak 7m 7m Throw  
 Brk. Breakthrough LD Long distance shooting As. Assists E7 Earned 7m St. Steals 2m 2-minute suspension C7. Received 7m  
 D Disqualification Dr Disqualification+Report FT Free Throw PC Pass clear chance OE Offensiven Errors TP Time played W warning  
 Blk. Block



中国手球协会  
CHINESE HANDBALL ASSOCIATION

# 2024全国女子手球冠军杯赛

四川.万州区

Semi-Final



Match Team Statistics  
Match NO.24

广东 30.5 - 40.0 山东  
(14.5-17.5)(16.0-22.5)

2024-05-27 18:45  
万州区三峡之星体育馆

Referees: 严璐(CHN) / 万敏(CHN)

## Shot distribution by player

3.姜翌珊

5.赵晔

6.张雨乐

7.顾天澍

8.唐悦

9.韦娜娜

10.董雪

1/1		1/1

		1/1
		1/1
4/5	0/1	1/2

1/1		0/1
		1/1

	0/1	
1/3		

1/1	3/3	
		2/2
1/2		2/2

		0/1
0/1		1/2


1post

11.周亚茹

15.王慧

1post

16.冯颖慧

19.张晓梅

20.李梦瑶

1post 1block

22.范春燕

23.覃元沿

		0/1
2/2		2/4







1post

26.杨丽丽

36.张含笑

.合计


		1/1

1/1	3/4	1/2
2/4		3/5
8/11	0/1	9/13

4post 2block

## Saves distribution goalkeepers

16.冯颖慧

22.范春燕

26.杨丽丽

.合计

0/1	0/3	1/3
	2/2	1/1
0/1		0/5

1/3		
0/2		2/5
0/6		1/4

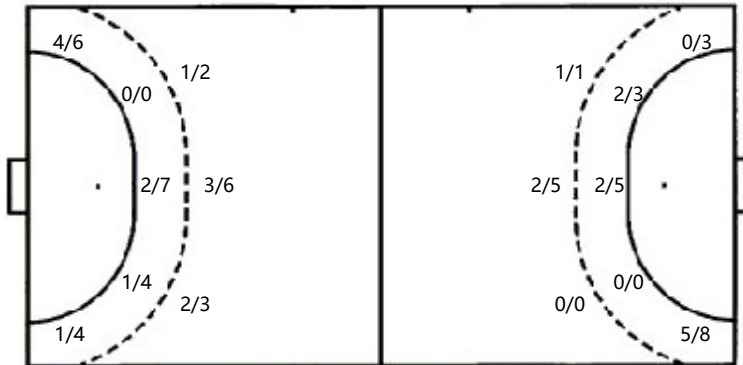
0/1		
0/1	1/1	0/2
2/3		0/2

1/5	0/3	1/3
0/3	3/3	3/8
2/10		1/11

## Shots by position

ATTACK

DEFENSE



7m penalties 4/6  
Fastbreak 5/5  
Breakthrough 3/3  
Long dist. 1/1  
Free Throw 0/0

7m penalties 3/4  
Fastbreak 10/10  
Breakthrough 10/13  
Long dist. 0/0  
Free Throw 0/1

## Shooting statistics

Position	Goals	Save	Miss	Post	Blk	Total	%
9m	6	3		1	1	11	55
6m	3	5		2	1	11	27
边射	5	4		1		10	50
7m	4	2				6	67
快攻	5					5	100
突破	3					3	100
任意球							
超远射	1					1	100
合计	27	14		4	2	47	57

# Jersey number Tot. Total shooting 6m 6m shooting 9m 9m shooting WingWing shooting Fst Fastbreak 7m 7m Throw  
Brk. Breakthrough LD Long distance shooting As. Assists E7 Earned 7m St. Steals 2m 2-minute suspension C7. Received 7m  
D Disqualification Dr Disqualification+Report FT Free Throw PC Pass clear chance OE Offensiven Errors TP Time played W warning



中国手球协会  
CHINESE HANDBALL ASSOCIATION

# 2024全国女子手球冠军杯赛

四川.万州区

Semi-Final



Match Team Statistics

Match NO.24

广东 30.5 - 40.0 山东

(14.5-17.5)(16.0-22.5)

2024-05-27 18:45  
万州区三峡之星体育馆

Referees: 严璐(CHN) / 万敏(CHN)

## 山东

#	Surname and name	Goals/shots										Attack				Defense			Penalties			TP				
		Tot.	%	9m	6m	Wing	7m	Fst.	Brk.	FT	LD	As.	PC	E7	OE	St.	C7	Blk	W	2m	D		Dr			
2	林燕群	7/11	63.64	0/2	0/1	1/1		1/1	5/6						1	1		1	2							40:10
3	常靖悦	3/7	42.86		0/1	2/5		1/1									2									40:02
4	孙玉坤																									00:00
6	耿明德																1									11:58
9	穆庆丛	4/5	80		2/3		1/1		1/1					1	2	1	2	1			2					46:41
10	田秀秀	5/7	71.43	1/2	1/1			2/2	1/1	0/1				1	1	2	1									36:05
16	袁玲洁																									53:22
20	柳李财	5/8	62.5		1/1	0/3		4/4							1	2										49:41
21	孙晓琦	1/2	50				1/2							1	1			1								09:29
23	徐悦														1	1	1		1	1						33:41
24	邓雅楠																									30:08
25	李瑞	0/1			0/1																					06:33
28	薛俊怡	4/4	100			2/2		2/2									1									21:28
31	赵欣瑶	5/7	71.43	1/1			1/1		3/5								1	2								53:56
66	马文龙	1/1	100	1/1												1										06:04
	合计	35/53	66.04	3/6	4/8	5/11	3/4	10/10	10/13	0/1				4	1	6	10	8	4	2	1	2				07:19:18

Goalkeepers		Saves / shots											TP
#	Surname and name	Tot.	%	9m	6m	Wing	7m	Fst	Brk.	FT	LD		
16	袁玲洁	6/17	35.29	2/4	2/2	2/4	0/3	0/3	0/1			53:22	
24	邓雅楠	8/23	34.78	1/5	3/6	2/5	2/3	0/2	0/2			30:08	
	合计	14/40	35	3/9	5/8	4/9	2/6	0/5	0/3			01:23:30	

# Jersey number Tot. Total shooting 6m 6m shooting 9m 9m shooting Wing Wing shooting Fst Fastbreak 7m 7m Throw  
 Brk. Breakthrough LD Long distance shooting As. Assists E7 Earned 7m St. Steals 2m 2-minute suspension C7. Received 7m  
 D Disqualification Dr Disqualification+Report FT Free Throw PC Pass clear chance OE Offensiven Errors TP Time played W warning  
 Blk. Block



中国手球协会  
CHINESE HANDBALL ASSOCIATION

# 2024全国女子手球冠军杯赛

四川.万州区

Semi-Final



FTR  
Match NO.24

广东 30.5 - 40.0 山东  
(14.5-17.5)(16.0-22.5)

2024-05-27 18:45  
万州区三峡之星体育馆

Referees: 严璐(CHN) / 万敏(CHN)

## Shot distribution by player

2.林燕群

3.常靖悦

4.孙玉坤

6.耿明德

9.穆庆丛

10.田秀秀

16.袁玲洁

	2/2	1/1
1/1	0/1	1/2
1/1		1/1

1miss 1block  
20.柳李财

	0/1	0/1
2/3		1/1

1miss  
21.孙晓琦


23.徐悦


24.邓雅楠

1/1		
		0/1
1/1		2/2

25.李瑞

	1/1	
2/2		
1/1		1/1

2miss  
28.薛俊怡


31.赵欣瑶

2/2		0/1
		1/1
		2/2

1post 1miss  
66.马文龙

		1/1
0/1		

.合计



	0/1	

		2/2
2/2		

	0/1	
		1/1
1/1		3/4

1/1		

4/5	3/3	2/3
3/3	0/3	5/8
8/10		10/11

1post 5miss 1block

## Saves distribution goalkeepers

16.袁玲洁

24.邓雅楠

.合计

		1/1
1/3		1/2
1/3	1/1	1/7

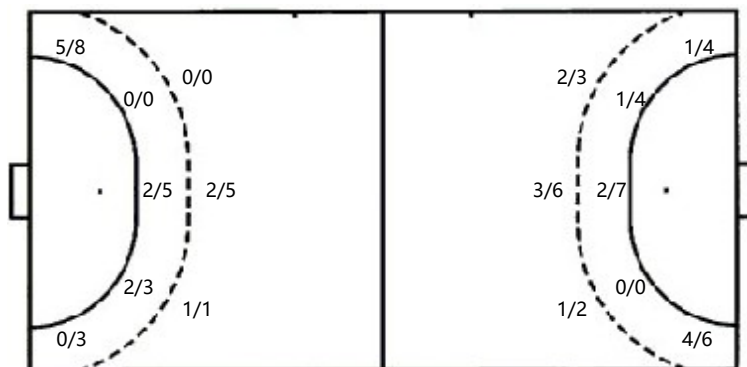
0/1	1/3	0/1
1/1		1/3
2/8		3/6

0/1	1/4	1/2
2/4		2/5
3/11	1/1	4/13

## Shots by position

ATTACK

DEFENSE



7m penalties 3/4

Fastbreak 10/10

Breakthrough 10/13

Long dist. 0/0

Free Throw 0/1

7m penalties 4/6

Fastbreak 5/5

Breakthrough 3/3

Long dist. 1/1

Free Throw 0/0

## Shooting statistics

Position	Goals	Save	Miss	Post	Blk	Total	%
9m	3	1	1		1	6	50
6m	4	3	1			8	50
边射	5	3	2	1		11	45
7m	3	1				4	75
快攻	10					10	100
突破	10	3				13	77
任意球			1			1	
超远射							
合计	35	11	5	1	1	53	66

# Jersey number Tot. Total shooting 6m 6m shooting 9m 9m shooting WingWing shooting Fst Fastbreak 7m 7m Throw  
 Brk. Breakthrough LD Long distance shooting As. Assists E7 Earned 7m St. Steals 2m 2-minute suspension C7. Received 7m  
 D Disqualification Dr Disqualification+Report FT Free Throw PC Pass clear chance OE Offensiven Errors TP Time played W warning