

Cumulative Statistics

球队累计

JPN - Japan

After 8 matches

Players		MP	Shots								Offence		Defence		Punishment			TP	
No.	Name		G/S	%	6m	Wing	9m	7m	FB	BT	EG	AS	TO	ST	BS	YC	2Min		RC
1	SAKAI Motoki	8										1				1			3:03:42
2	KASAHARA Kenya	6	3/6	50	2/4			1/2				2	1	6		1			3:30:00
3	NARITA Kohei	5	3/5	60	1/1	0/2		1/1	1/1			2	1	2	3				2:38:34
5	MOTOKI Hiroki	6	29/43	67	3/3	12/16	3/6	3/5	5/6	3/6	0/1	4	3	7		4			3:52:27
6	AGARIE Yuto	8	23/35	66	6/11		5/8	3/5		8/9	1/2	5	5	1					2:28:57
7	SUGIOKA Naoki	7	28/35	80	2/3	8/10		4/8	13/13		1/1		3	3		1			4:19:10
8	YOSHINO Tatsuki	7	23/40	58	5/8		6/17		3/4	9/11		7	10	4		2			2:54:51
9	TAMAKAWA Hiroyasu	8	8/10	80	5/6				3/3		0/1	2	3	2	4		3		3:12:54
10	TOKUDA Shinnosuke	6	18/28	64	7/11		3/6	0/1	4/4	4/6		6	5	1					3:11:39
12	NAKAMURA Takumi	8	0/1				0/1					3	3						3:48:19
13	YAMADA Shinya	6	4/7	57	0/3				4/4			1	1	4	4		2		2:47:11
14	BAIG Adam Yuki	8	25/51	49	3/3		14/35		2/4	5/7	1/1	3	10	1	3	1	3		3:54:25
15	KAWAHARA Shuto	8	30/47	64	7/12		13/23		4/5	6/7		2	6		1				3:10:36
16	KANI Daiki	7	24/35	69	5/8	4/5	4/8		8/11	3/3		1	5	6			1		2:37:14
33	TSUTAYA Taiga	8	35/46	76	0/2	11/16	3/4	9/11	11/12		1/1	1	3	1					3:17:47
34	IZUMOTO Shin	8	34/44	77	3/4	5/7	8/13		11/11	6/8	1/1	2	6				2		3:49:24
Bench/Team																3			
Total			287/433	66	49/79	40/56	59/121	19/30	70/80	45/58	5/8	39	67	33	21	4	20		

Goalkeepers		Total Shots		6m Shots		Wing Shots		9m Shots		7m Shots		Fast Breaks		Breakthroughs		Empty Goal	
No	Name	S/S	%	S/S	%	S/S	%	S/S	%	S/S	%	S/S	%	S/S	%	S/S	%
1	SAKAI Motoki	46/128	36	16/35	46	4/16	25	19/35	54	0/13		3/8	38	4/21	19		
12	NAKAMURA Takumi	43/154	28	11/40	28	8/27	30	16/41	39	3/17	18	1/8	13	4/20	20	0/1	
Total		89/303	29	27/76	36	12/43	28	35/96	36	3/30	10	4/16	25	8/41	20	0/1	

Teams Shots	Goals	Saves	Missed	Post	Blocked	Total	%
6m Shots	49	18	5	4	3	79	62
Wing Shots	40	12	2	2		56	71
9m Shots	59	33	9	10	10	121	48
7m Shots	19	10		1	N/A	30	63
Fast Breaks	70	8	1	1		80	87
Breakthroughs	45	8	3	2		58	77
Empty Goal	5		1	2		8	62
Totals	287	89	21	22	13	432	66

Played		
PR	KSA	38-29
PR	IRI	33-21
PR	MGL	16-53
MR	CHN	28-23
MR	KAZ	48-20
MR	QAT	32-29
SF	BRN	30-28
F	KUW	30-31

Number of Shots: 432, Scoring Efficiency: 66%

Cumulative Statistics

球队累计

JPN - Japan

After 8 matches

Shots Distribution

1 SAKAI Motoki			2 KASAHARA Kenya			3 NARITA Kohei			5 MOTOKI Hiroki			6 AGARIE Yuto			7 SUGIOKA Naoki			8 YOSHINO Tatsuki		
				1/1					4/4	2/3	1/2	3/3	1/1	1/1	4/4	2/3	4/4	3/3	1/2	1/2
			0/1		0/1	0/1			1/3	0/1	0/2			2/4	1/3		2/3	1/2		1/1
			1/2		1/1		2/3	1/1	8/8	3/4	10/11	10/11	2/5	4/5	2/3	2/2	11/13	5/6	3/4	8/9
									3-Missed 1-Post 1-Blocked			3-Post 2-Blocked			6-Missed 1-Post 4-Blocked					
9 TAMAKAWA Hiroyasu			10 TOKUDA Shinnosuke			12 NAKAMURA Takumi			13 YAMADA Shinya			14 BAIG Adam Yuki			15 KAWAHARA Shuto			16 KANI Daiki		
1/1		3/3	3/3		1/2					0/1		3/7	0/2	3/3	2/2		2/3	1/2		4/5
0/1		1/1	4/6		1/2				2/2		0/1	6/8	0/1	0/1	4/6	0/1	4/6	1/3		2/4
2/2	1/1		5/5	0/2	4/5						2/2	7/7	1/2	5/11	7/8	2/2	9/11	11/11	1/3	4/4
1-Post			1-Missed 2-Post			1-Post			1-Post			3-Missed 2-Post 3-Blocked			2-Missed 4-Post 2-Blocked			1-Missed 2-Post		
33 TSUTAYA Taiga			34 IZUMOTO Shin			9998 Bench/Team														
8/8	6/6	4/4	1/1	2/2	4/4															
2/3	2/2	2/3	1/2		4/5															
6/6	0/1	5/8	13/14	2/2	7/9															
2-Missed 2-Post 1-Blocked			3-Missed 2-Post																	

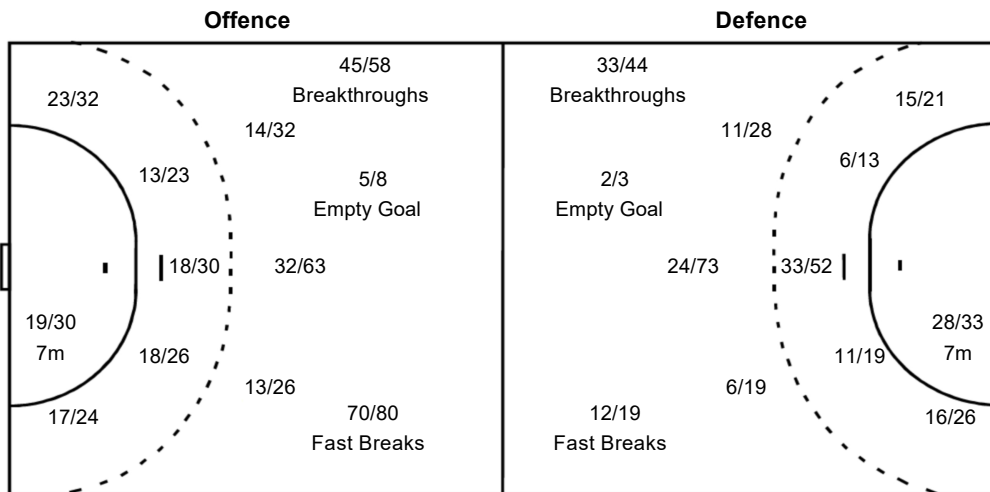
Goalkeepers Saves / Shots

5/27	5/6	5/25
14/21	9/11	8/21
18/82	11/19	18/78

Team Goals / Shots

33/38	15/21	28/33
23/41	2/5	19/34
77/83	19/31	71/90

21-Missed 22-Post 13-Blocked



1 SAKAI Motoki		
4/13		2/11
6/9	4/5	4/9
12/42	7/9	8/33

12 NAKAMURA Takumi		
1/14	5/6	3/14
8/12	5/6	4/12
6/40	4/10	10/45

Legend:			
%	Efficiency	2Min	2 Minute Suspensions
9m	9 metre Shots	AS	Asists
BT	Breakthroughs	EG	Empty Goal
No.	Uniform Number	RC	Red Cards
TO	Turnover	TP	Time Played
6m	6 metre Shots	7m	7 metre Shots
BC	Blue Cards	BS	Blocked Shots
FB	Fast Breaks	G/S	Goals/Shots
S/S	Saves/Shots	ST	Steals
Wing	Wing Shots	YC	Yellow Cards