





# 25th IHF Women's Junior World Championship 2026



Preliminary Round - Group H, 1. round

Match Team Statistics  
Match No. 16

**Japan 32 - 22 Faroe Islands**  
(16 - 11) (16 - 11)

24.6.2026. 18:30  
Attendance: 220  
Jinzong University  
Gymnasium

Referees: Ismailj Metalari (MKD) / Nenad Nikolovski (MKD)

## Shot distribution by player

<b>4 . Jinho</b> 0/2 1 post 1/1	<b>6 H. Samo</b> 2/2 1/1 2/2 2/2 1/1 lob	<b>7 C. Honda</b> 1/1	<b>10 Y. Matsumoto</b> 1/1 1/1	<b>13 . Ikeda</b> 1/1 1/1	<b>14 M. Nakamura</b> 1 miss.	<b>15 W. Kita</b> 1/1
<b>17 K. Abe</b>	<b>18 J. Kio</b> 1/1	<b>19 M. Muramatsu</b> 0/1	<b>20 H. Arakaki</b> 1 post 1/1	<b>23 A. Nakao</b> 1 post 1/1 lob 1/2	<b>25 M. Kato</b> 1 miss. 2/2 lob 1/1	<b>27 S. Saito</b> 1/1

## TOTAL

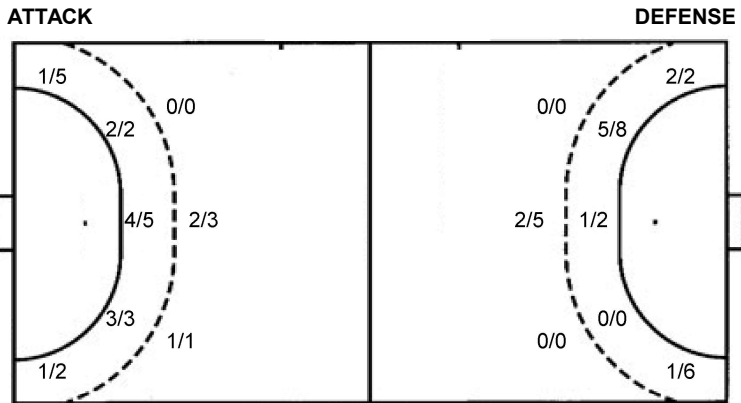
3/3	5/6	
1/3	4/4	
4/5	4/4	6/6

3 post 2 miss. 4/4 lob

## Saves distribution goalkeepers

<b>1 H. Fujiwara</b> 0/1 0/1 0/1	<b>12 H. Osaki</b> 2/6 1/1 2/3	<b>TOTAL</b> 2/7 1/2 2/4	<b>1/5</b> <b>1/5</b> <b>2/9</b>
---	---	-----------------------------------	--

## Shots by position



7m penalties 4/4	7m penalties 3/3
Fastbreak 0/0	Fastbreak 0/0
Breakthrough 10/10	Breakthrough 8/10
Long dist. 4/6	Long dist. 0/0

## Shooting statistics

Position	Goals	Sav.	Miss.	Post	Blk.	Total	%
Back (9m)	3	1	0	0	0	4	75
Line (6m)	9	0	1	0	0	10	90
Wing	2	3	0	2	0	7	29
7m penalties	4	0	0	0	0	4	100
Fastbreak	0	0	0	0	0	0	0
Breakthrough	10	0	0	0	0	10	100
<b>Total</b>	<b>28</b>	<b>4</b>	<b>1</b>	<b>2</b>	<b>0</b>	<b>35</b>	<b>80</b>

# Jersey number Tot. Total shooting 6m 6m (line) shooting 9m 9m shooting Wng Wing shooting FB Fastbreak sh. 7m 7m penalty sh.  
 Brk. Breakthrough sh. LD Long distance sh. As. Assists PC Pass clear chance E7 Earned 7m pen. TF Technical faults St. Steals  
 2m 2m punishments C7. Committed 7m E2 Earned 2m pun. YC. Yellow cards R/B Red/Blue cards Blk. Blocks S Starting Line-up





# 25th IHF Women's Junior World Championship 2026



Preliminary Round - Group H, 1. round

## Match Team Statistics

Match No. 16

## Japan 32 - 22 Faroe Islands

(16 - 11) (16 - 11)

24.6.2026. 18:30

Attendance: 220

Jinzhong University

Gymnasium

Referees: Ismailj Metalari (MKD) / Nenad Nikolovski (MKD)

### Shot distribution by player

#### 2 R. Christiansen

		1/1
		1/1

1/1 lob

#### 3 H. Magnusardóttir


#### 4 A. Jacobsen


1 post

#### 7 J. Johannensen

0/1	0/1	1/1

1 post

#### 8 R. Joensen

0/1	1/1	3/4

#### 9 R. Reginsdóttir

2/2		
	0/1	1/1

#### 10 S. Eystberg

0/1		3/4
2/2		1/1

#### 11 A. Djurhuus

0/1		

#### 13 K. Kjarbak

2/3		

1/2 lob

#### 15 M. Laursen

		0/1

1 miss.

#### 17 L. Ísfield


#### 18 A. Hansen


#### 19 E. Í Stórustovu

1/1		

#### 22 M. Jansdóttir

1/1		

### TOTAL

5/7		4/5
1/2		
2/4	1/3	7/9

2 post 1 miss. 2/3 lob

### Saves distribution goalkeepers

#### 16 G. Á Neystabo

0/3		1/3
1/1		0/3
0/3	0/1	0/3

#### 51 M. Beder

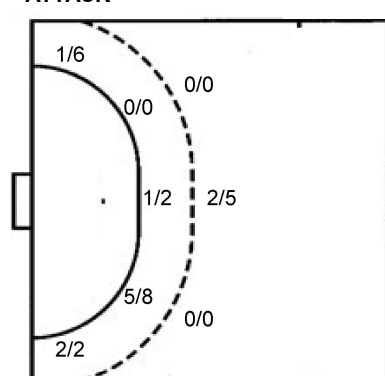
		0/3
1/2		0/1
1/2		0/3

### TOTAL

0/3		1/6
2/3		0/4
1/5	0/1	0/6

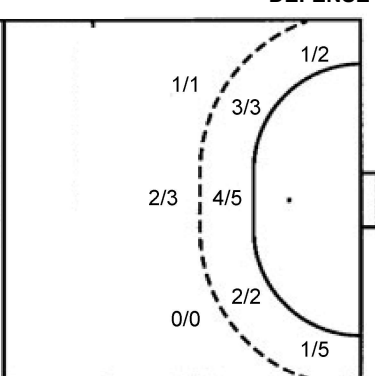
### Shots by position

#### ATTACK



7m penalties 3/3  
Fastbreak 0/0  
Breakthrough 8/10  
Long dist. 0/0

#### DEFENSE



7m penalties 4/4  
Fastbreak 0/0  
Breakthrough 10/10  
Long dist. 4/6

### Shooting statistics

Position	Goals	Sav.	Miss.	Post	Blk.	Total	%
Back (9m)	2	2	0	1	0	5	40
Line (6m)	6	4	0	0	0	10	60
Wing	3	3	1	1	0	8	38
7m penalties	3	0	0	0	0	3	100
Fastbreak	0	0	0	0	0	0	0
Breakthrough	8	2	0	0	0	10	80
<b>Total</b>	<b>22</b>	<b>11</b>	<b>1</b>	<b>2</b>	<b>0</b>	<b>36</b>	<b>61</b>

# Jersey number Tot. Total shooting 6m 6m (line) shooting 9m 9m shooting Wng Wing shooting FB Fastbreak sh. 7m 7m penalty sh.  
Brk. Breakthrough sh. LD Long distance sh. As. Assists PC Pass clear chance E7 Earned 7m pen. TF Technical faults St. Steals  
2m 2m punishments C7. Committed 7m E2 Earned 2m pun. YC. Yellow cards R/B Red/Blue cards Blk. Blocks S Starting Line-up

Handball statistics and livescore by Toma-soft ltd (www.toma-soft.hr)

