



25th IHF Women's Junior World Championship 2026



Preliminary Round - Group A, 1. round

Match Team Statistics

France 24 - 22 Sweden

24.6.2026. 16:15

Match No. 1

(14 - 9) (10 - 13)

Attendance: 250

Jinzhong College Gymnasium

Referees: Khasan Ismoilov (UZB) / Khasan Ismoilov (UZB)

France

Players		Goals / shots									Attack				Def.			Penalties			TP				
#	Surname and name	S	Tot.	%	9m	6m	Wing	7m	FB	Brk.	LD	As.	PC	E7	E2	TF	St.	C7	Bik	YC	2m	R	B		
1	GONZALEZ Leane	S										1				1									27:35
4	GROS Blandine	S	1/2	50			0/1			1/1						1		2				1			28:59
5	BARBARIN Jade		1/1	100		1/1						1	1			1	1								28:36
7	ABDOU Dawiya		4/8	50	0/1	0/1	1/1		1/2	2/3							2	1							30:45
8	NAAL Liyah	S	4/4	100	1/1		1/1		1/1	1/1			1			1	1					2			33:24
9	INJAI Zeina	S	5/8	63	3/6					2/2		1	1			1						1			29:08
10	KOESTNER Claire	S	1/2	50	1/1					0/1		1	1		1	4									42:11
11	BUREU-CRUZ Emma		0/1	0	0/1									1											7:28
13	FERDILUS Elea	S	0/2	0		0/2								2		1			1						37:21
14	ATANGANA Yvana		2/2	100	1/1					1/1						2	1	1				1			17:31
15	SAMAI Lyson		2/3	67				2/3																	7:28
16	GINDRO Romane														1										27:39
17	CHANTELLY Melissa	S	1/2	50	1/2								1			1	1		1						35:07
18	VAMA Mara															1									19:26
19	LAMBET Lalie											1				1									16:26
21	KINGUE Prunelle		3/6	50	1/4	1/1			1/1				1			2	1		1						30:56
	Team / bench															1									
	TOTAL		24/41	59	8/17	2/5	2/3	2/3	3/4	7/9	0/0	5	6	3	1	18	7	4	3	0	5	0	0		

Goalkeepers		Saves / shots								
#	Surname and name	Tot.	%	9m	6m	Wing	7m	FB	Brk.	LD
1	GONZALEZ Leane	3/12	25		0/1	3/7	0/2		0/2	
16	GINDRO Romane	8/20	40	2/6	0/5	3/4	2/2		1/3	
	TOTAL	11/32	34	2/6	0/6	6/11	2/4	0/0	1/5	0/0

Coach: Baradat Eric

Number of attacks: 55, Efficiency: 44%, Average Duration: 33.34 seconds

Attack by type of defense

	Shots	9m	6m	Wing	TF	E7	E2
On def. 6-0	19/34	8/17	2/5	2/3	18	3	1
Fastbreak	3/4				0	0	0

Defense by type

	Total	9m	6m	Wing	Stl.	C7	2m
Def. 6-0	18/38	4/11	5/6	5/14	7	4	0
Fastbreak	0/0				0	0	5

Attack with superiority / minority / goalkeeper out

	Attack				Reaction		
	Att.	Eff.	Shots	TF	FB	LD	Tot.
7 on 6 (GK out)	3	67%	2/2	1	0/0	1/1	1/1
6 on 6 (GK out)	5	40%	2/3	2	0/0	0/0	0/0
6 on 6	45	40%	18/30	15			
6 on 5	2	100%	2/2	0			

Player superiority / GK out counted at the end of attack (in case it changes during attack)

Defense with superiority / minority / goalkeeper out

	Attack				Reaction		
	Att.	Eff.	Shots	TF	FB	LD	Tot.
6 on 6 (GK out)	1	0%	0/0	1	0/0	0/0	0/0
6 on 6	48	42%	20/34	14			
6 on 5	7	29%	2/6	1			

Numbers show attacking numbers of opponent. Lower efficiency of opponent means better defense of this team

Jersey number Tot. Total shooting 6m 6m (line) shooting 9m 9m shooting Wng Wing shooting FB Fastbreak sh. 7m 7m penalty sh.
 Brk. Breakthrough sh. LD Long distance sh. As. Assists PC Pass clear chance E7 Earned 7m pen. TF Technical faults St. Steals
 2m 2m punishments C7. Committed 7m E2 Earned 2m pun. YC. Yellow cards R/B Red/Blue cards Blk. Blocks S Starting Line-up

Handball statistics and livescore by Toma-soft ltd (www.toma-soft.hr)



25th IHF Women's Junior World Championship 2026



Preliminary Round - Group A, 1. round

Match Team Statistics

Match No. 1

France 24 - 22 Sweden

(14 - 9) (10 - 13)

24.6.2026. 16:15

Attendance: 250

Jinzhong College Gymnasium

Referees: Khasan Ismoilov (UZB) / Khasan Ismoilov (UZB)

Shot distribution by player

4 B. Gros	5 J. Barbarin	7 D. Abdou	8 L. Naal	9 Z. Injai	10 C. Koestner	11 E. Bureu-Cruz
0/1		0/1		1/1	1/2	
0/1		1/1	1/1	3/3		0/1
1/1	1/1	1/1		1/1		
		2 miss. 1/1 lob	3/3 lob	1 post 1 miss. 1 block		

13 E. Ferdilus	14 Y. Atangana	15 L. Samai	17 M. Chantelly	18 M. Vama	19 L. Lambet	21 P. Kingue
						1/1
			0/1			0/1
0/1	1/1	1/2	1/1			0/1
1 post						1 block

TOTAL

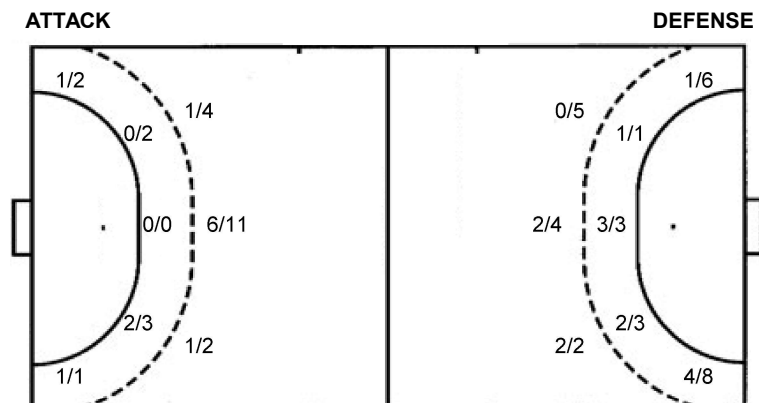
1/1	1/2	1/2
3/5		3/5
5/6	1/2	5/7

2 post 3 miss. 2 block 4/4 lob

Saves distribution goalkeepers

1 L. Gonzalez	16 R. Gindro	TOTAL
1/2	2/4	3/6
1/3	1/1	2/4
0/3	1/6	1/9
0/1	1/4	0/1
		1/4

Shots by position



7m penalties 2/3
Fastbreak 3/4
Breakthrough 7/9
Long dist. 0/0

7m penalties 2/4
Fastbreak 0/0
Breakthrough 4/7
Long dist. 1/1

Shooting statistics

Position	Goals	Sav.	Miss.	Post	Blk.	Total	%
Back (9m)	8	4	2	1	2	17	47
Line (6m)	2	2	0	1	0	5	40
Wing	2	1	0	0	0	3	67
7m penalties	2	1	0	0	0	3	67
Fastbreak	3	0	1	0	0	4	75
Breakthrough	7	2	0	0	0	9	78
Total	24	10	3	2	2	41	59

Jersey number Tot. Total shooting 6m 6m (line) shooting 9m 9m shooting Wng Wing shooting FB Fastbreak sh. 7m 7m penalty sh.
Brk. Breakthrough sh. LD Long distance sh. As. Assists PC Pass clear chance E7 Earned 7m pen. TF Technical faults St. Steals
2m 2m punishments C7. Committed 7m E2 Earned 2m pun. YC. Yellow cards R/B Red/Blue cards Blk. Blocks S Starting Line-up

Handball statistics and livescore by Toma-soft ltd (www.toma-soft.hr)



25th IHF Women's Junior World Championship 2026



Preliminary Round - Group A, 1. round

Match Team Statistics

France 24 - 22 Sweden

24.6.2026. 16:15

Match No. 1

(14 - 9) (10 - 13)

Attendance: 250

Jinzhang College Gymnasium

Referees: Khasan Ismoilov (UZB) / Khasan Ismoilov (UZB)

Sweden

Players		Goals / shots									Attack					Def.			Penalties			TP			
#	Surname and name	S	Tot.	%	9m	6m	Wing	7m	FB	Brk.	LD	As.	PC	E7	E2	TF	St.	C7	Blk	YC	2m		R	B	
1	BÖRJESSON Tyra																								
2	HESTNER OLSSON Selma	S	4/5	80	0/1	2/2				2/2		2				5									39:46
4	RYDÉN Isabelle	S	3/3	100		3/3							1				1	1	1		1				57:29
5	KALLIO Caroline		0/1	0		0/1								1	1										17:05
9	DITTSCHLAG Märtha	S	4/6	67		4/6										1									44:21
11	TÖRDAL Alice																								
12	SAUL Wilma	S																							37:03
13	BÖRJESSON Ebba		4/11	36	2/6			2/3		0/2			1		1	2									18:27
14	LUNDEVALL Hanna	S	3/5	60	1/2	1/1		0/1			1/1	2	4	1	1	2									49:50
15	MAGNUSSON Moa		0/1	0	0/1													1							6:28
16	DANIELSSON Anna											1													21:26
17	KNUTSSON Hilma	S	3/3	100	1/1					2/2		3	2			2		1	1						35:06
25	ILVELL Elsa		0/2	0		0/2										1									14:41
28	BERGLING Klara	S	1/5	20		1/5								1	1										43:34
32	LILJA Smilla		0/2	0		0/1				0/1		2	1	1	1	2	2								31:22
35	LUNDIN Lisa															1									3:06
	Team / bench																								
	TOTAL		22/44	50	4/11	6/7	5/14	2/4	0/0	4/7	1/1	10	9	4	5	16	3	3	2	0	1	0	0		

Goalkeepers		Saves / shots								
#	Surname and name	Tot.	%	9m	6m	Wing	7m	FB	Brk.	LD
1	BÖRJESSON Tyra									
12	SAUL Wilma	6/22	27	3/8	2/3	0/2	0/2	0/2	1/5	
16	DANIELSSON Anna	4/11	36	1/3	0/1	1/1	1/1	0/1	1/4	
	TOTAL	10/33	30	4/11	2/4	1/3	1/3	0/3	2/9	0/0

Coach: Jennie Linnéll

Number of attacks: 56, Efficiency: 39%, Average Duration: 31.38 seconds

Attack by type of defense

	Shots	9m	6m	Wing	TF	E7	E2
On def. 6-0	18/38	4/11	5/6	5/14	16	4	5
Fastbreak	0/0				0	0	0

Defense by type

	Total	9m	6m	Wing	Stl.	C7	2m
Def. 6-0	19/34	8/17	2/5	2/3	3	3	0
Fastbreak	3/4				0	0	1

Attack with superiority / minority / goalkeeper out

	Attack				Reaction		
	Att.	Eff.	Shots	TF	FB	LD	Tot.
6 on 6 (GK out)	1	0%	0/0	1	0/0	0/0	0/0
6 on 6	48	42%	20/34	14			
6 on 5	7	29%	2/6	1			

Player superiority / GK out counted at the end of attack (in case it changes during attack)

Defense with superiority / minority / goalkeeper out

	Attack				Reaction		
	Att.	Eff.	Shots	TF	FB	LD	Tot.
7 on 6 (GK out)	3	67%	2/2	1	0/0	1/1	1/1
6 on 6 (GK out)	5	40%	2/3	2	0/0	0/0	0/0
6 on 6	45	40%	18/30	15			
6 on 5	2	100%	2/2	0			

Numbers show attacking numbers of opponent. Lower efficiency of opponent means better defense of this team

Jersey number Tot. Total shooting 6m 6m (line) shooting 9m 9m shooting Wng Wing shooting FB Fastbreak sh. 7m 7m penalty sh.
 Brk. Breakthrough sh. LD Long distance sh. As. Assists PC Pass clear chance E7 Earned 7m pen. TF Technical faults St. Steals
 2m 2m punishments C7. Committed 7m E2 Earned 2m pun. YC. Yellow cards R/B Red/Blue cards Blk. Blocks S Starting Line-up

Handball statistics and livescore by Toma-soft ltd (www.toma-soft.hr)



25th IHF Women's Junior World Championship 2026



Preliminary Round - Group A, 1. round

Match Team Statistics

Match No. 1

France 24 - 22 Sweden

(14 - 9) (10 - 13)

24.6.2026. 16:15

Attendance: 250

Jinzhong College Gymnasium

Referees: Khasan Ismoilov (UZB) / Khasan Ismoilov (UZB)

Shot distribution by player

2 S. Hestner Olsson

1/1		
1/1		
2/2		0/1

4 I. Rydén

1/1		

2/2 lob

5 C. Kallio

1 miss.

9 M. Dittschlag

0/1	1/1	
1/1		0/1
	1/1	1/1

11 A. Tördal

13 E. Börjesson

1/1		0/1
3/4		

2 post 2 miss. 1 block

14 H. Lundvall

1/1		
0/1		
	1/1	1/1

1 block

15 M. Magnusson

1 block

17 H. Knutsson

2/2		1/1

25 E. Ilvell

0/1		

1 post

28 K. Bergling

0/1	0/1	1/1
0/1		

1 post

32 S. Lilja

		0/1

1 miss.

35 L. Lundin

TOTAL

3/6	1/2	1/2
2/4		0/2
8/9	2/2	3/4

4 post 4 miss. 3 block 2/2 lob

Saves distribution goalkeepers

1 T. Börjesson

12 W. Saul

	1/2	1/2
1/2		2/5
0/3	0/1	1/4

16 A. Danielsson

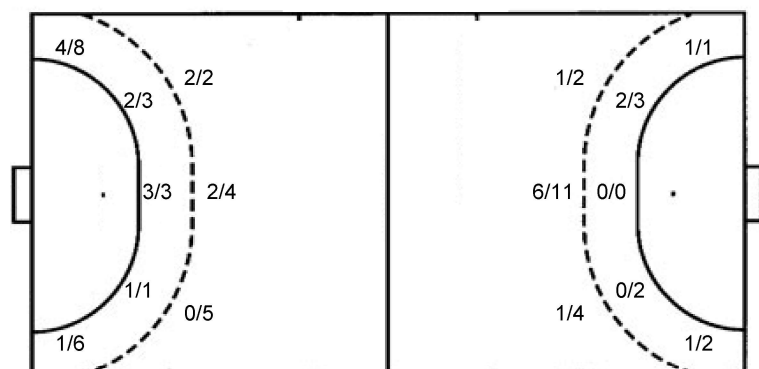
0/1		
1/3		
1/3	1/1	1/3

TOTAL

0/1	1/2	1/2
2/5		2/5
1/6	1/2	2/7

Shots by position

ATTACK



7m penalties	2/4
Fastbreak	0/0
Breakthrough	4/7
Long dist.	1/1

DEFENSE

7m penalties	2/3
Fastbreak	3/4
Breakthrough	7/9
Long dist.	0/0

Shooting statistics

Position	Goals	Sav.	Miss.	Post	Blk.	Total	%
Back (9m)	4	2	1	1	3	11	36
Line (6m)	6	0	1	0	0	7	86
Wing	5	6	1	2	0	14	36
7m penalties	2	2	0	0	0	4	50
Fastbreak	0	0	0	0	0	0	0
Breakthrough	4	1	1	1	0	7	57
Total	21	11	4	4	3	43	49

Jersey number Tot. Total shooting 6m 6m (line) shooting 9m 9m shooting Wng Wing shooting FB Fastbreak sh. 7m 7m penalty sh.
 Brk. Breakthrough sh. LD Long distance sh. As. Assists PC Pass clear chance E7 Earned 7m pen. TF Technical faults St. Steals
 2m 2m punishments C7. Committed 7m E2 Earned 2m pun. YC. Yellow cards R/B Red/Blue cards Blk. Blocks S Starting Line-up

Handball statistics and livescore by Toma-soft ltd (www.toma-soft.hr)

