



25th IHF Women's Junior World Championship 2026



Preliminary Round - Group D, 1. round

Match Team Statistics

Match No. 8

Korea 32 - 29 Turkiye

(14 - 10) (18 - 19)

24.6.2026. 14:00

Attendance: 150

Zhongdu Campus

Gymnasium

Referees: Makrem Ben Dahou (TUN) / Rochdi Zoghlami (TUN)

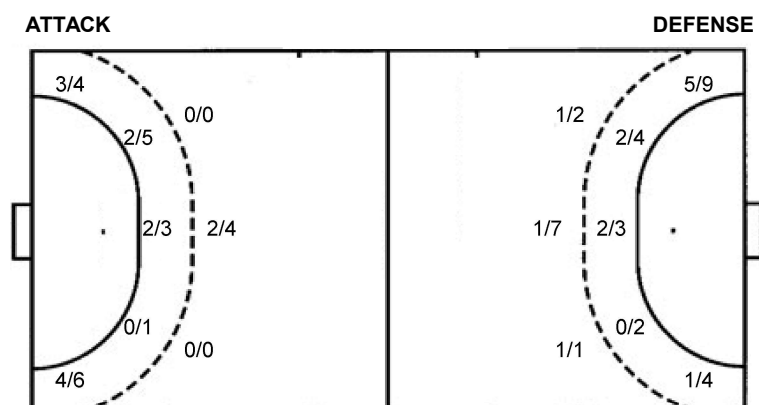
Shot distribution by player

2 Y. Shin	9 J. Kim	10 H. Park	13 A. Lee	17 A. Suh	19 E. Jang	20 Y. Lee
1/1	1/1 4/4	0/1 0/1	0/1 1/1 2/2 1/1	2/2 1/1 1/1 1/2 4/5		0/1 1/1 1/1
	1 miss.			1 miss.	1 post	1/1 lob
21 B. Kim	23 B. Kim	29 H. Ku	30 C. Park	31 H. Choi	33 B. Yoon	TOTAL
	1/1 2/2 1/1			0/1 0/2 3/4 1/1		0/1 3/3 2/6 2/2 6/8 13/15 1/1 3/4
		1 miss.		1/1 lob		1 post 3 miss. 2/2 lob

Saves distribution goalkeepers

16 D. Kim	22 Y. Hong	77 C. Go	TOTAL
1/3 1/1 1/3 1/2 2/2 0/6 0/5 1/5		0/1 2/4 0/1 1/2 0/2 1/1 1/2	1/4 1/1 1/3 3/6 0/1 3/4 0/8 1/6 2/7

Shots by position



7m penalties 2/4
Fastbreak 3/3
Breakthrough 12/15
Long dist. 2/2

7m penalties 4/7
Fastbreak 1/3
Breakthrough 11/12
Long dist. 0/1

Shooting statistics

Position	Goals	Sav.	Miss.	Post	Blk.	Total	%
Back (9m)	2	0	1	1	0	4	50
Line (6m)	4	4	1	0	0	9	44
Wing	7	2	1	0	0	10	70
7m penalties	2	2	0	0	0	4	50
Fastbreak	3	0	0	0	0	3	100
Breakthrough	12	3	0	0	0	15	80
Total	30	11	3	1	0	45	67

Jersey number Tot. Total shooting 6m 6m (line) shooting 9m 9m shooting Wng Wing shooting FB Fastbreak sh. 7m 7m penalty sh.
Brk. Breakthrough sh. LD Long distance sh. As. Assists PC Pass clear chance E7 Earned 7m pen. TF Technical faults St. Steals
2m 2m punishments C7. Committed 7m E2 Earned 2m pun. YC. Yellow cards R/B Red/Blue cards Blk. Blocks S Starting Line-up



25th IHF Women's Junior World Championship 2026



Preliminary Round - Group D, 1. round

Match Team Statistics

Match No. 8

Korea 32 - 29 Türkiye

(14 - 10) (18 - 19)

24.6.2026. 14:00

Attendance: 150

Zhongdu Campus

Gymnasium

Referees: Makrem Ben Dahou (TUN) / Rochdi Zoghlami (TUN)

Shot distribution by player

2 A. Kahraman

3 S. Bozova

2 post

5 I. Yüksel

1 post 1 miss.

7 K. Çınar

0/1		
1/1		1/1

2 post

11 S. Dağlı

1/1		
0/1		0/2
2/2	3/3	

1 post

13 E. Hüzmeli

0/1		

14 B. Sönmez

1/1	1/1	3/4

3 post

23 B. Seven

1/1		
2/2	1/1	
3/3	1/2	0/1

1 miss.

24 N. Kaya

28 S. Durdu

1 miss. 1/1 lob

38 A. Öztürk

41 G. Dikme

0/1		1/1
1/1		0/1

1 post

63 H. Karagözü

71 H. Muhcu

1/1	0/1	1/2
		1/1
1/1		1/1

1 post

TOTAL

3/4	0/1	2/3
3/6	1/1	1/4
8/8	5/6	5/7

11 post 3 miss. 1/1 lob

Saves distribution goalkeepers

45 B. Yılmaz

1/1		0/3
4/6		2/7
2/13	0/1	1/3

61 S. Keskin

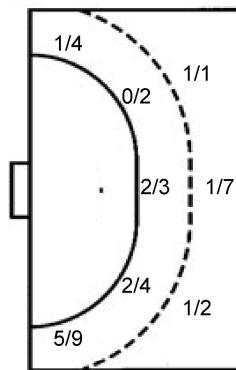
		0/1
0/2		0/1

TOTAL

1/1		0/3
4/6		2/8
2/15	0/1	1/4

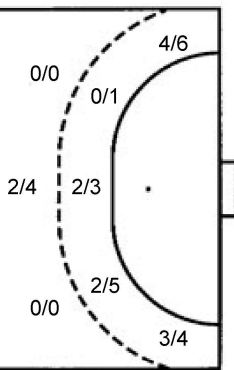
Shots by position

ATTACK



7m penalties 4/7
Fastbreak 1/3
Breakthrough 11/12
Long dist. 0/1

DEFENSE



7m penalties 2/4
Fastbreak 3/3
Breakthrough 12/15
Long dist. 2/2

Shooting statistics

Position	Goals	Sav.	Miss.	Post	Blk.	Total	%
Back (9m)	3	3	1	3	0	10	30
Line (6m)	4	2	0	3	0	9	44
Wing	6	3	1	3	0	13	46
7m penalties	4	2	0	1	0	7	57
Fastbreak	1	1	1	0	0	3	33
Breakthrough	11	1	0	0	0	12	92
Total	29	12	3	10	0	54	54

Jersey number Tot. Total shooting 6m 6m (line) shooting 9m 9m shooting Wng Wing shooting FB Fastbreak sh. 7m 7m penalty sh.
Brk. Breakthrough sh. LD Long distance sh. As. Assists PC Pass clear chance E7 Earned 7m pen. TF Technical faults St. Steals
2m 2m punishments C7. Committed 7m E2 Earned 2m pun. YC. Yellow cards R/B Red/Blue cards Blk. Blocks S Starting Line-up

Handball statistics and livescore by Toma-soft ltd (www.toma-soft.hr)

