



25th IHF Women's Junior World Championship 2026



Preliminary Round - Group E, 1. round

Match Team Statistics

Match No. 9

Denmark 32 - 16 Guinea

(18 - 11) (14 - 5)

24.6.2026. 16:15

Attendance: 2250

Jinzhong City Gymnasium

Referees: Raul Oyarzun Aylagas (ESP) / Aritz Zaragueta (ESP)

Shot distribution by player

2 C. Antivakis

1/1		
0/1		

3 J. Andersen

1/2		
	1/2	

1 post

5 T. Ulrichsen

2/2		

6 E. Sibanda

1/1		
1/1		

7 K. Hoppe

	0/1	
4/5		3/3

10 I. Jensen

1/1		1/1
1/1		1/1

2 post 2 miss.

14 L. Lützhof

		1/1

15 J. Persson

		1/1
		0/1
2/2		

17 L. Martens

18 E. Rasmussen

1/1		
1/1		1/1

22 J. Johansen

1/1		
2/2	2/2	

1 post 3 miss.

24 C. Norskov

		1/1

1 post

29 E. Bodker

1/1		

TOTAL

4/4		2/2
4/6	0/1	3/4
12/13	3/4	4/4

5 post 5 miss.

Saves distribution goalkeepers

12 M. Koerth

0/1		
1/1	1/1	
4/7		3/4

16 F. Nielsen

		0/1
1/2	2/2	1/3
2/5	1/2	2/3

20 F. Solling Fager

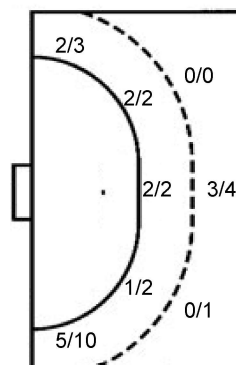
	1/1	
0/1		1/1
		0/1

TOTAL

0/1	1/1	0/1
2/4	3/3	2/4
6/12	1/2	5/8

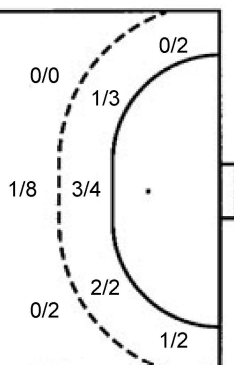
Shots by position

ATTACK



7m penalties 3/5
Fastbreak 5/6
Breakthrough 9/13
Long dist. 0/0

DEFENSE



7m penalties 1/2
Fastbreak 0/0
Breakthrough 7/14
Long dist. 0/0

Shooting statistics

Position	Goals	Sav.	Miss.	Post	Blk.	Total	%
Back (9m)	3	1	0	1	0	5	60
Line (6m)	5	1	0	0	0	6	83
Wing	7	2	3	1	0	13	54
7m penalties	3	0	0	2	0	5	60
Fastbreak	5	0	0	1	0	6	83
Breakthrough	9	2	2	0	0	13	69
Total	32	6	5	5	0	48	67

Jersey number Tot. Total shooting 6m 6m (line) shooting 9m 9m shooting Wng Wing shooting FB Fastbreak sh. 7m 7m penalty sh.
Brk. Breakthrough sh. LD Long distance sh. As. Assists PC Pass clear chance E7 Earned 7m pen. TF Technical faults St. Steals
2m 2m punishments C7. Committed 7m E2 Earned 2m pun. YC. Yellow cards R/B Red/Blue cards Blk. Blocks S Starting Line-up

Handball statistics and livescore by Toma-soft ltd (www.toma-soft.hr)



25th IHF Women's Junior World Championship 2026



Preliminary Round - Group E, 1. round

Match Team Statistics

Denmark 32 - 16 Guinea

24.6.2026. 16:15

Match No. 9

(18 - 11) (14 - 5)

Attendance: 2250

Jinzhong City Gymnasium

Referees: Raul Oyarzun Aylagas (ESP) / Aritz Zaragueta (ESP)

Guinea

#	Surname and name	S	Goals / shots								Attack					Def.			Penalties			TP				
			Tot.	%	9m	6m	Wing	7m	FB	Brk.	LD	As.	PC	E7	E2	TF	St.	C7	Blk	YC	2m		R	B		
1	CAMARA Mama Adama	S																								54:01
2	CAMARA Mabinty Delmaya		3/5	60	1/2	1/1				1/2					1	1			4	1	1					59:53
3	SOKPO Edite Ablavy																									
4	BANGOURA Ramatoulaye		1/1	100		1/1																				5:21
5	DIALLO Aissatou	S	3/7	43	0/2		1/2			2/3									2	2				1		50:36
6	KOLIE Celestine		0/2	0		0/1	0/1																	1		19:04
7	RACINE DIALLO Maellie Hawa														1				2							11:48
8	SOUMAH Fatoumata Naby		3/7	43	0/2	1/1		1/1		1/3				2	1				4	2				1		42:35
9	DIALLO Mariama	S	0/2	0			0/1			0/1				2		1	1			1				2		31:14
11	MANSARE Yarie	S	1/4	25	0/1					1/3									3							43:36
12	KEITA Fatou																									1:50
22	SOUMAH Aminata	S	3/8	38	0/3	1/2		0/1		2/2									4	3				1		54:36
23	RACINE DIALLO Jade Habie																									6:56
26	DIALLO Mariame																									
29	DIABY Saran	S	2/3	67		2/3										1	1									32:24
78	DIARRA Boutie	S																								6:06
	Team / bench																									
	TOTAL		16/39	41	1/10	6/9	1/4	1/2	0/0	7/14	0/0			5	3	2	2	19	5	5	0	0	6	0	0	

#	Surname and name	Saves / shots								
		Tot.	%	9m	6m	Wing	7m	FB	Brk.	LD
1	CAMARA Mama Adama	6/34	18	1/3	1/3	2/9	0/3	0/5	2/11	
78	DIARRA Boutie	0/4	0	0/1	0/3					
	TOTAL	6/38	16	1/4	1/6	2/9	0/3	0/5	2/11	0/0

Coach: Titi Clementine Mara

Number of attacks: 56, Efficiency: 29%, Average Duration: 39.71 seconds

Attack by type of defense

	Shots	9m	6m	Wing	TF	E7	E2
On def. 6-0	15/37	1/10	6/9	1/4	19	2	2
Fastbreak	0/0				0	0	0

Defense by type

	Total	9m	6m	Wing	Stl.	C7	2m
Def. 6-0	6/10	0/1	0/0	3/4	0	1	0
Def. 5-1	16/23	3/4	3/3	4/8	5	4	0
Fastbreak	5/6				0	0	6

Attack with superiority / minority / goalkeeper out

	Attack				Reaction		
	Att.	Eff.	Shots	TF	FB	LD	Tot.
6 on 6	46	26%	12/29	17			
5 on 6	6	33%	2/4	2			
6 on 5	3	33%	1/3	0			
6 on 4	1	100%	1/1	0			

Player superiority / GK out counted at the end of attack (in case it changes during attack)

Defense with superiority / minority / goalkeeper out

	Attack				Reaction		
	Att.	Eff.	Shots	TF	FB	LD	Tot.
7 on 6 (GK out)	2	50%	1/2	0	0/0	0/0	0/0
7 on 5 (GK out)	1	0%	0/1	0	0/0	0/0	0/0
6 on 6 (GK out)	2	50%	1/2	0	0/0	0/0	0/0
6 on 6	40	55%	22/32	8			
6 on 5	10	80%	8/10	0			
5 on 6	1	0%	0/1	0			

Numbers show attacking numbers of opponent. Lower efficiency of opponent means better defense of this team

Jersey number Tot. Total shooting 6m 6m (line) shooting 9m 9m shooting Wng Wing shooting FB Fastbreak sh. 7m 7m penalty sh.
 Brk. Breakthrough sh. LD Long distance sh. As. Assists PC Pass clear chance E7 Earned 7m pen. TF Technical faults St. Steals
 2m 2m punishments C7. Committed 7m E2 Earned 2m pun. YC. Yellow cards R/B Red/Blue cards Blk. Blocks S Starting Line-up

Handball statistics and livescore by Toma-soft ltd (www.toma-soft.hr)



25th IHF Women's Junior World Championship 2026



Preliminary Round - Group E, 1. round

Match Team Statistics

Match No. 9

Denmark 32 - 16 Guinea

(18 - 11) (14 - 5)

24.6.2026. 16:15

Attendance: 2250

Jinzhong City Gymnasium

Referees: Raul Oyarzun Aylagas (ESP) / Aritz Zaragueta (ESP)

Shot distribution by player

2 M. Camara

		1/1
		1/1
	1/1	0/1

1 miss.

3 E. Sokpo

4 R. Bangoura

1/1		

5 A. Diallo

1/1		
1/1	0/3	
1/2		

6 C. Kolie

	0/1	
		0/1

7 M. Racine Diallo

8 F. Soumah

0/1		
2/5		1/1

9 M. Diallo

	0/1	0/1

11 Y. Mansare

0/1		1/3

12 F. Keita

22 A. Soumah

0/1		
2/3		1/2

1 post 1 miss.

23 J. Racine Diallo

26 M. Diallo

29 S. Diaby

		1/2
1/1		

TOTAL

1/1	0/1	1/1
2/4	0/3	2/4
6/12	1/2	3/8

1 post 2 miss.

Saves distribution goalkeepers

1 M. Camara

0/3		0/2
2/6	1/1	1/3
1/12	1/4	0/3

78 B. Diarra

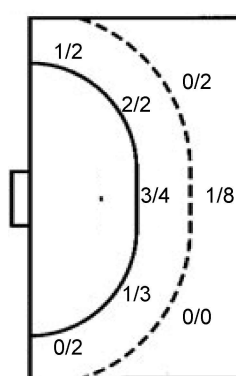
0/1		
		0/1
0/1		0/1

TOTAL

0/4		0/2
2/6	1/1	1/4
1/13	1/4	0/4

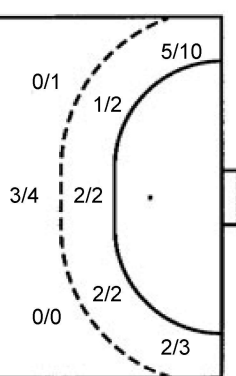
Shots by position

ATTACK



7m penalties 1/2
Fastbreak 0/0
Breakthrough 7/14
Long dist. 0/0

DEFENSE



7m penalties 3/5
Fastbreak 5/6
Breakthrough 9/13
Long dist. 0/0

Shooting statistics

Position	Goals	Sav.	Miss.	Post	Blk.	Total	%
Back (9m)	1	7	1	1	0	10	10
Line (6m)	6	3	0	0	0	9	67
Wing	1	3	0	0	0	4	25
7m penalties	1	1	0	0	0	2	50
Fastbreak	0	0	0	0	0	0	0
Breakthrough	7	6	1	0	0	14	50
Total	16	20	2	1	0	39	41

Jersey number Tot. Total shooting 6m 6m (line) shooting 9m 9m shooting Wng Wing shooting FB Fastbreak sh. 7m 7m penalty sh.
Brk. Breakthrough sh. LD Long distance sh. As. Assists PC Pass clear chance E7 Earned 7m pen. TF Technical faults St. Steals
2m 2m punishments C7. Committed 7m E2 Earned 2m pun. YC. Yellow cards R/B Red/Blue cards Blk. Blocks S Starting Line-up

Handball statistics and livescore by Toma-soft ltd (www.toma-soft.hr)

